

LIAOCHENG CHINA

BULLETIN 1

2026 FISU
WORLD UNIVERSITY CHAMPIONSHIP
MIND SPORTS



LIAOCHENG 2026
FISU CHAMPIONSHIP



Dear student-athletes and friends,

I am honored and delighted to welcome you to the 2026 FISU World University Championship Mind Sports! This event, co-hosted by the China Student Sports Federation and the People's Government of Liaocheng City, stands as a testament to our unwavering commitment to the spirit of mind sports, innovation, and the pursuit of excellence.

As the Party Secretary of the CPC Liaocheng Municipal Committee, I am delighted to witness university athletes from around the world gather in this historic yet vibrant city. Your presence not only brings intellectual vitality, but also showcases the distinctive appeal of cultural integration and a shared spirit as embodied by mind sports.

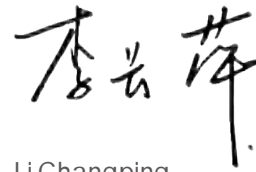
We sincerely welcome you to Liaocheng, China, and eagerly anticipate that young talents from different countries will convey the values of rational thinking and harmonious coexistence to every corner of the world through the unique bond of mind sports. The Liaocheng Organizing Committee firmly believes in the inspiring power of mind sports—it can spark innovative potential, hone strategic thinking, and, most importantly, foster mutual understanding and build consensus among people from diverse cultural backgrounds. The Championship is not only a stage for competition but also a precious platform to showcase the art of strategy, exchange ways of thinking, and forge lasting

friendships.

As you embark on this challenging and rewarding journey of mind sports, please remember that every match, foresight, and decision is a valuable opportunity to expand your mind and elevate yourself. Embrace the challenges to your mind with courage, cherish each strategic breakthrough, and always strive to transcend yourself for excellence.

Once again, a warm welcome to all participants of the 2026 FISU World University Championship Mind Sports! We hope your time in Liaocheng will be both fulfilling and unforgettable. May you build genuine international friendships, experience the excitement of intense mind sports, and take pure joy in the sports you love.

We wish you to shine in the battle of wits, and may this Championship conclude successfully, leaving vivid and unforgettable moments in your youthful memories!

A handwritten signature in black ink, consisting of three characters: '李', '长', and '萍'. The characters are written in a fluid, cursive style.

Li Changping

Party Secretary of the CPC Liaocheng Municipal Committee



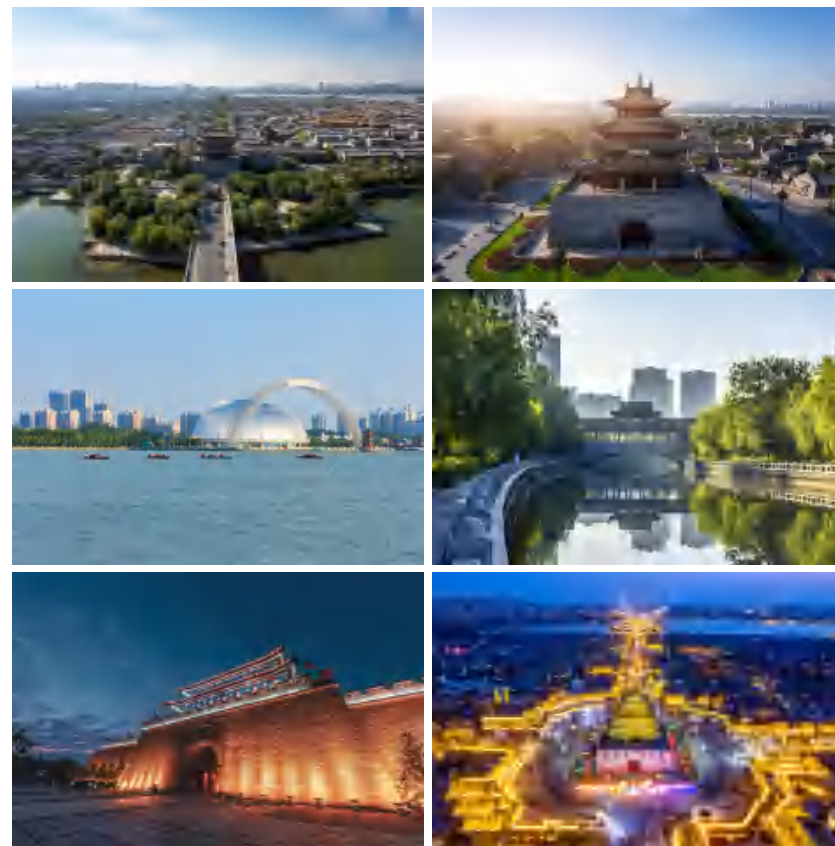
1. OVERVIEW

1.1 - THE CITY

Liaocheng, located in western Shandong Province, China, has a semi-arid continental climate, covering an area of 8,628 square kilometers with a permanent population of 5.9 million. Born of water and beautified by its lakes, the city embodies both the profound heritage of Yellow River agrarian civilization and the openness of canal-based commerce, earning it the title “Water City North of the Yangtze, and Pearl of Two Rivers.” Dongchang Lake, shimmering with rippling waves, is hailed as the “Venice of Northern China,” while the Guangyue Tower, standing for over six centuries, bears witness to the city’s enduring history. As an emerging hub for mind sports in China, Liaocheng promotes “wisdom empowerment” and has built a system that spans all age groups. The city has over 400,000 enthusiasts, and more than 400 schools and kindergartens offer chess and related programs, demonstrating rapid growth in mind sports. Looking ahead, Liaocheng aims to expand its “mind sports+” strategy, building an integrated ecosystem of competitions, training, research, and industrialization, and to become a model smart city that blends tradition with modern vitality.

1.2 - THE CLIMATE

In October, Liaocheng enjoys crisp and pleasant autumn weather, with average temperatures ranging from 10°C to 20°C. Days are comfortably warm while nights turn cool and refreshing. This period, marking the transition from summer to autumn, brings little rainfall, dry air, and mostly clear skies with gentle sunshine — creating ideal conditions for the Mind Sports. Athletes from around the world can stay at their best, fully focused on strategic play and the minds exchanges, and immerse themselves in this vibrant celebration of youthful intellect.





1.3 - THE EVENT

The 2026 FISU World University Championship Mind Sports will take place in Liaocheng, China, from October 11 to 16, featuring chess and bridge. The event will offer university athletes and Mind Sports enthusiasts from different countries and regions a valuable opportunity to connect ideas and exchange wisdom in a collaborative and competitive environment. Here, participants will showcase their strategic and critical thinking skills, convey the power of youthful intellect in a vibrant atmosphere, and jointly create a celebration that blends competitive passion with cultural exchange.

2. ORGANIZING COMMITTEE

2026 FISU World University Championship Mind Sports will be endorsed by the International University Sports Federation (FISU) and co-hosted by the China Student Sports Federation and the People's Government of Liaocheng. The Organizing Committee (OC) is working closely with independent institutions such as the Chinese Bridge Association, the Chinese Chess Association, and the China Anti-Doping Agency to coordinate event preparation, competition management, and service, making every effort to ensure the successful delivery of the championship.



3. PRELIMINARY SCHEDULE

The championship is to be held on October 11-16, 2026. The Preliminary Schedule is set as follows.

DAY	DATE	ACTIVITY
-3	October 8	Arrival and check-in, Accreditation
-2	October 9	Arrival and check-in, Accreditation, Trainings
-1	October 10	Arrival, Trainings, Accreditation, General Technical Meeting
1	October 11	Opening Ceremony, Competition
2-5	October 12-15	Competition
6	October 16	Finals Awarding and Closing Ceremony
+1	October 17	Departure

The OC plans to arrange a cultural experience activity on either October 15 or October 16, according to the event schedule.

4. REGISTRATION

ENTRY FORMS	DEADLINE
General Entry	April 11, 2026
Quantitative Entry	July 11, 2026
Individual Entry	September 11, 2026



5. FINANCIAL CONDITION

80€

Participation Fee

Per person, per night, covering all OC services, including accommodation, meals and transportation

160€

Extra Officials Fee

Per person, per night

20€/40€

FISU Registration Fee

EUR 20 per person (for FISU members)
EUR 40 per person (for non-FISU members)



FISU Fee Note

There will be no on-site payment. All members need to do is to have the HoD signing the confirmation of the delegation numbers. FISU will issue an invoice to the NUSFs at the end of the season.

6. DELEGATION COMPOSITION

6.1 - CHESS

A. Athletes

TOURNAMENT	MEN'S	WOMEN'S
Individual	Max. 3 athletes	Max. 3 athletes
Mixed Team	Max. 1 team (3 men + 3 women)	
Max. 8 athletes (5 men & 3 women, 4 men & 4 women or 3 men & 5 women) per delegation		

Requirements: Each delegation may have a maximum of 8 athletes (5 men + 3 women, 4 men + 4 women, or 3 men + 5 women). All athletes must meet the eligibility criteria of their National/Regional Chess Federation and FIDE (World Chess Federation). During the technical meeting, the head of the delegation must confirm and sign the FISU-certified list of participants.

B. Officials

Each delegation may have a maximum of 3 officials.

6.2 - BRIDGE

A. Athletes

TOURNAMENT	MEN'S	WOMEN'S
Open	Max. 3 teams (6 individuals) per delegation	
Max. 18 athletes per delegation		

Requirements: All athletes must meet the eligibility criteria of their National/Regional Bridge Federation and the World Bridge Federation. During the technical meeting, the head of the delegation must confirm and sign the FISU-certified list of participants.

B. Officials

Each delegation may have a maximum of 6 officials.

6. DELEGATION COMPOSITION

6.3 - Athlete Eligibility

Only the athletes who comply with the following conditions may take part in a FISU World University Championship:

- a) Be a national of the country they represent;
- b) Be at least 18 and no older than 25 years of age on the 31st December of the year of the event; for 2026, athletes must be born between the 01/01/2001 and the 31/12/2008.



7. VENUE



The 2026 FISU World University Championship Mind Sports will be held at the Arcadia International Hot Spring Hotel in Liaocheng — a iconic venue that perfectly blends elegant gardens with the charm of a hot spring resort. Participants will compete in a professionally equipped mind sports arena, featuring international-standard chess and bridge tables, soundproof competition equipment, and a modern event support system, all surrounded by lush greenery and tranquil water features, creating a focused yet comfortable competitive atmosphere. This is not only a stage for intellectual battles, but also a place where participants can enjoy hot spring wellness, thoughtful services, and the rich historical and cultural heritage of Liaocheng. Amidst this serene and elegant environment, young minds will shine brilliantly both in and beyond the competition.

8. ACCOMMODATION



All participants of the 2026 FISU World University Championship Mind Sports will be accommodated at the Arcadia International Hot Spring Hotel in Liaocheng.
Address: No. 20 Hunan Road, Dongchangfu District, Liaocheng, Shandong Province, China.

9. FOOD AND BEVERAGE

The OC of the 2026 FISU World University Championship Mind Sports will provide all participants with a wide variety of Chinese and Western cuisine, including halal food and vegetarian options.

BREAKFAST: 06:30 – 08:00

LUNCH: 11:30 – 14:30

DINNER: 18:00 – 20:00

Any adjustments to the above meal times will be updated in the latest Bulletin as necessary according to the championship schedule.



10. OFFICIAL POINTS OF ARRIVAL AND DEPARTURE

The two official entry points are:

1. Jinan Yaoqiang International Airport

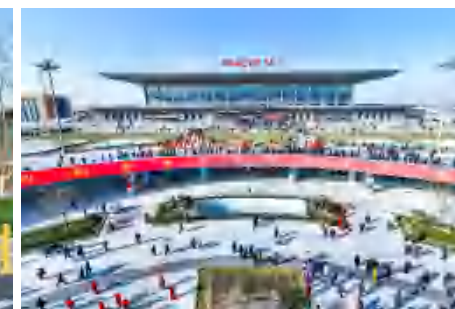
Located in Yaoqiang, Jinan, China, the airport is approximately 136 km from the hotel (competition venue), with an estimated travel time of 90–100 minutes by car.

Official website: <https://www.jnairport.com/>

2. Liaocheng West High-Speed Rail Station

The station is approximately 6-7 km from the hotel (competition venue) and about 6.7 km from the city center, with an estimated travel time of 10–20 minutes by car.

China Railway 12306 Official website: <https://www.12306.cn/en/index.html>



11. TRANSPORTATION

In addition to transportation services at designated official arrival and departure points, the OC will provide transportation for official activities.

12. INSURANCE

Participants are responsible for arranging their own insurance coverage. Such insurance arrangements fall under the responsibility of the participating delegations and are not provided by the OC or FISU.

13. MEDICAL SERVICE & DOPING CONTROL

First-aid will be provided by the OC, but all participants must hold valid personal health insurance to cover any further medical treatment that may be incurred. Anti-doping control will take place at the delegations' hotel.



14. OTHER INFORMATION

14.1 - INFORMATION DESK

During the event, the OC will set up information desks in the reception area of the Liaocheng Arcadia International Hot Spring Hotel and the competition venues, staffed with English-speaking personnel, to provide general information services to all participants.

Service hours: 08:00–20:00

The registration page: <https://gms-fisu.net/#/login>

Event's page: <https://mindsports2026.fisu.net/>

Event's Instagram: <https://www.instagram.com/fisu.mindsports/>

Event's Facebook: <https://www.facebook.com/FISUMindSports>

14.2 - CURRENCY

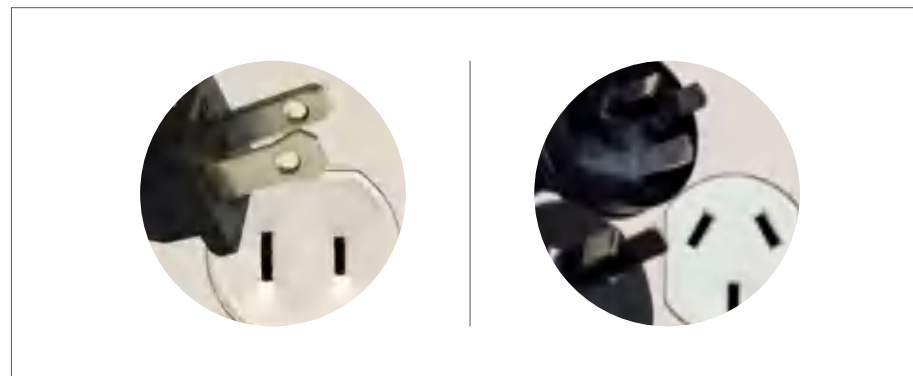
The currency in China is the Renminbi (CNY). Credit card payments are widely accepted in commercial establishments in Liaocheng.

14.3 - TIME ZONE

Liaocheng is in the UTC/GMT +8 time zone (Beijing Time).

14.4 - ELECTRICAL VOLTAGE AND POWER OUTLETS

The standard voltage in Liaocheng is 220 volts, with a frequency of 50 hertz. Power outlets typically use Type A (two flat pins) and Type I (three flat pins with grounding) plugs. Participants are advised to check the voltage compatibility of their personal devices in advance and, if necessary, bring appropriate plug adapters or voltage converters. Adapters can also be purchased at local convenience stores and electronics shops.



15. CONTACT INFORMATION



For any assistance, please feel free to contact the OC :

Wendy Yao: +86 155 8984 2060
Email Address of the OC : fisu2026_ms_lia@163.com

16. ENTRY AND VISA

Policy of entry permits and Visas

Except for those eligible for visa exemptions, foreigners participating in the 2026 FISU World University Championship Mind Sports in Liaocheng shall apply for a Chinese visa in advance from the Chinese embassies, consulates, and other institutions stationed abroad entrusted by the Ministry of Foreign Affairs of the People's Republic of China.

Visa-exempt Countries

Citizens of certain countries do not require a visa to enter China for a short stay. The full list is available on the official government website or through your local embassy.

Visa application

All participating teams requiring a visa to enter China must provide the necessary personal details and scanned passport copies for all team members. These details must be submitted through the FISU Global Management System (GMS).

The deadline for the individual Forms registration is 11 September, 2026. Once this information is received, the OC will begin issuing the official invitation letters required for the visa application process.

For detailed information on the visa process, please visit the official website of the Chinese Visa Application Service Centre: <https://www.visaforchina.cn/globe/> or consult the website of the Chinese embassy or consulate in your country.

