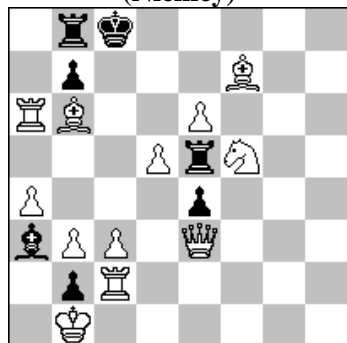
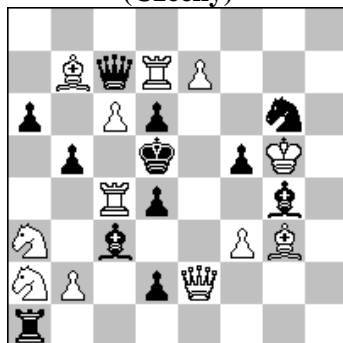


3319. Gerhard MALEIKA  
(Niemcy)



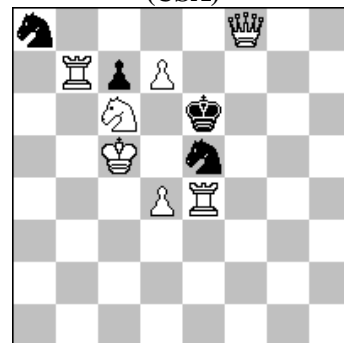
#2 (12+7)

3320. Miroslav SVITEK  
(Czechy)



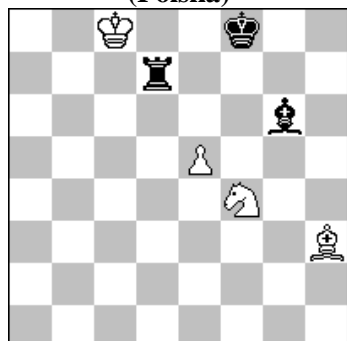
#2 (12+12)

3321. Steven B. DOWD  
(USA)



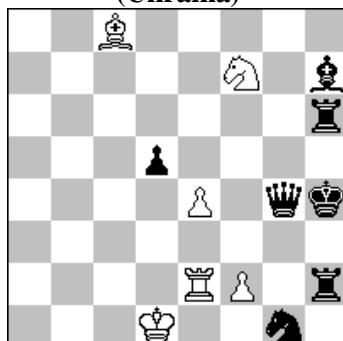
s#6 (7+4)

3322. Krzysztof DRAŹKOWSKI  
(Polska)



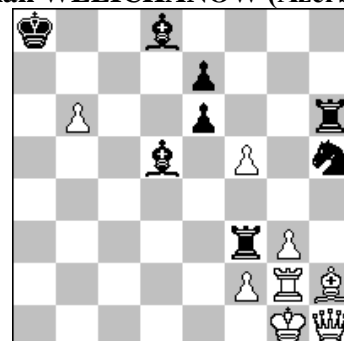
h#2 2 rozwiązania (4+3)

3323. Mykola WASIUCZKO  
(Ukraina)



h#2 b,c) Gc8→g6,h1 (6+7)

3324. Kivanç ÇEFLE (Turcja)  
& Kenan WELICHANOW (Azerbejdżan)



h#2 2 rozwiązania (8+8)  
b) Ka8→h8

- 3319 MALEIKA 1...Gc5/Gd6/Ge7 2.H:c5/S:d6/S:e7# 1.b4! ~ 2.Hc5/Sd6/Se7# 1...W:f5/b:a6/W:d5/G:b4/W:e6/Wa8 2.Hc5/Sd6/Se7/c:b4/G:e6/W:a8#
- 3320 SVITEK 1.Kf6? ~ 2.He6# 1...Se5 a,A 2.H:e5# 1...d3+ b,B 2.S:c3# 1...b:c4 c,C 2.H:c4# 1...H:d7 d,D 2.c:d7# 1...f4 e,I 2.He4# 1...Sf4,f8 2.He5# 1...Re1! 1.b4! ~ 2.Rc5# 1...Se5 a,E 2.H:e5# 1...d3 b,F 2.S:c3# 1...b:c4 c,G 2.H:c4# 1...H:d7 d,H 2.c:d7# 1...H:b6 f,D 2.R:d6#/ 1...B:b4 2.S:b4#. Change of defensive motifs in two phases and four variations, **Labai theme = DM – 24 – 48 abcd – ABCD/EFHG**. Combined change and transferred defence motivation in two variations, **dDeI/dHfD = DM – 23 – 33**. A – interference of threat unit's line; B – checking; C – creating flight by capture; D – direct guard of the threat square; E – creating flight by line interference; F – creating flight by unblocking of the royal square; G – capturing of the threat unit; H – indirect guarding by unpinning; I – indirect guarding by line-opening. [A]
- 3321 DOWD 1.Wa7! Sb6! (1...K:d7 2.He7+ Kc8 3.He6+ Sd7 4.Kd5 Sb6#) 2.d8S+ Kd7 3.He7+ Kc8 4.Wa8+ S:a8 5.He6+ Sd7 6.Kd5 Sb6# Under promotion to knight ; two knight (plus pawn) model mate. [A]
- 3322 DRAŹKOWSKI 1.Wf7 Gd7 2.Ke7 S:g6# 1.Gf7 Sg6+ 2.Ke8 G:d7#.
- 3323 WASIUCZKO a) 1.Hg3 We3 2.Wh5 f:g3# b) 1.Wh3 e:d5 2.He4 W:e4#. c) 1.H:e4 W:e4+ 2.Kh3 Sg5#. Konstanta Gavriliva, 3 maty wzorowe, v. Helpmate Analyzer.
- 3324 ÇEFLE & WELICHANOW 1,2;1,1: a) 1.W:g3 W:g3 2.Gb7 Wa3# 1.W:g3 G:g3 2.G:g2 H:g2# b) 1.S:g3 G:g3 2.Wh7 Ge5# 1.S:g3 W:g3 2.W:h2 H:h2#. Komentarz: v. Helpmate Analyzer.