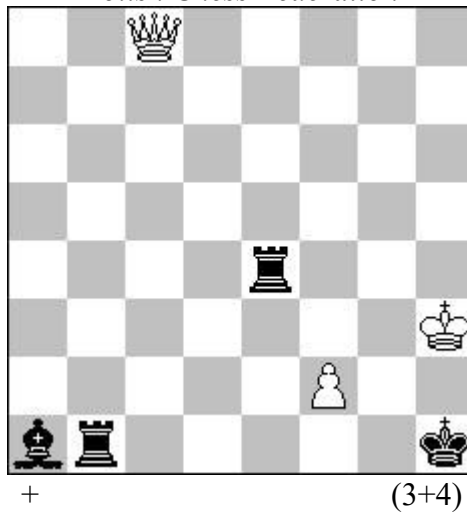
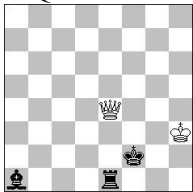


Martin Minski (Germany) & Árpád Rusz (Romania)

Polish Chess Federation



1.Qg8! [Logical try: 1.Qc2? Rbe1 2.Qb3 (2.Qd3) Kg1 3.Qf3 (3.Qg3+) Kf1 4.Qg2+ Ke2 5.Qxe4+ Kxf2=]



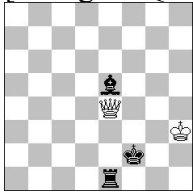
The bishop is ideally placed on a1. In the solution, White will have to use a Vorplan to decoy the bishop to a less favorable position, and only then can execute the Main plan.]

1...Rg1 2.Qb8! Be5 3.Qb7!

[3.Qa8? Rgg4! and White has to fight for the draw. 4.f4! Rgxf4 5.Qxe4+! Rxe4 stalemate; 3.Qb3? Reg4!=]

3...Rge1 4.Qb3! Bc3!

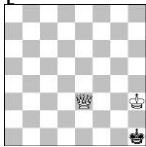
[4...Kg1 5.Qf3 Kf1 6.Qg2+ Ke2 7.Qxe4+ Kxf2]



Paradoxically, the bishop is on a worse square now than it was at the end of the Logical try. 8.Qf5+ Kg1 The king couldn't step on the e-file. 9.Qf3+—]

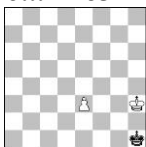
5.Qxc3 R1e3+! 6.Qxe3!!

[Thematic try: 6.fxe3? Rxe3+! 7.Qxe3]



stalemate]

6...Rxe3+ 7.fxe3



The pawn is better than the queen!