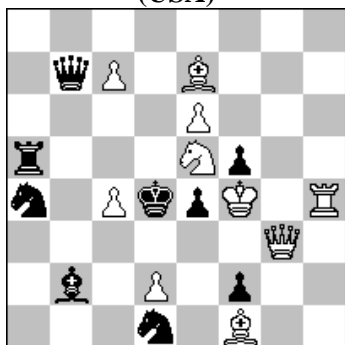


POLSKI ZWIĄZEK SZACHOWY 2024

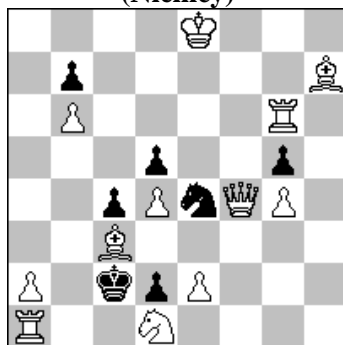
ORYGINALY 9 IV 2024 [3101 – 3106]

3101. Daniil YAKIMOVICH  
(USA)



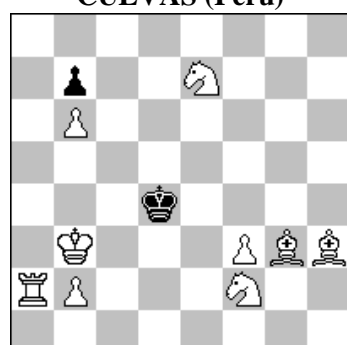
#2 (10+8)

3102. Gerhard MALEIKA  
(Niemcy)



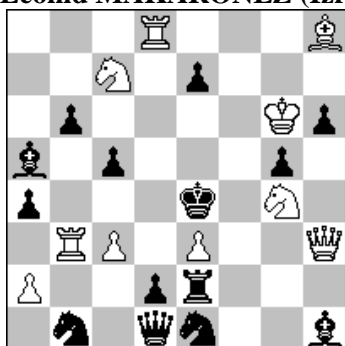
#2 (12+7)

3103. Antonio TARNAWIECKI  
CUEVAS (Peru)



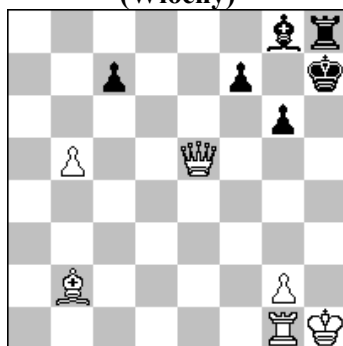
#4 (9+2)

3104. Leonid LIUBASZEWSKIJ  
& Leonid MAKARONEZ (Izrael)



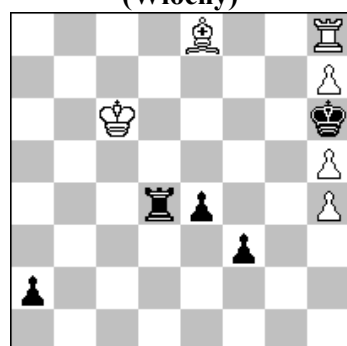
#4 (10+14)

3105. Daniele GATTI  
(Włochy)



s#5 (6+6)

3106. Daniele GATTI  
(Włochy)



= (6+5)

- 3101 YAKIMOVICH** 1.Hg7? ~ 2.Sf3# A/2.Sc6# C 1...H:c7! 1.Kg5? ~ 2.Sf3# A [2.Hd3+?] 1...W:e5 a 2.Hd3# B 1...Hb3 b 2.Sc6# C 1...f4! 1.K:f5! ~ 2.Hd3# B [2.Sf3??] 1...Sc5 2.Sf3# A 1...Hb3 a 2.W:e4# D 1...W:e5+ b 2.H:e5# E 1...Se3+ 2.H:e3#. Sushkov, pseudo Le Grand, changed mates, Rudenko, caprice, provoked checks. Sushkov (~A~B), pseudo Le Grand (~AB~BA), changed mates (aBbC-aDbE), Rudenko (~A~C-C-A), caprice (in the tries Black pin wSe5, in the solution, White do it themselves). [A]
- 3102 MALEIKA** 1.Wc6? ~ 2.H:d2# 1...g:f4! 1...b:c6 2.H:d2# 1.W:g5? pat! 1.H:g5? tempo 1...S:c3! 1.Hf5? pat! 1.He3! tempo ...Sc5,f2,g3/Sd6+/Sf6+/S:c3 2.H:d2/W:d6/W:f6/H:c3#.
- 3103 TARNAWIECKI CUEVAS** 1.Gf1! Ke3 2.Wa3 Kd2 3.Se4+ Kc1,d1 4.Wa1# 3...Ke3 4.Kc4# 2...Kd4 3.Se4 Ke3 4.Kc4# 1...Kc5 2.Se4+ Kd4 3.Wa3 Ke3 4.Kc4# 2...K:b6 3.Ka4 Ka7 4.Kb5#.
- 3104 LIUBASZEWSKIJ & MAKARONEZ** 1.Sd5! ~ 2.Sf6+ e:f6 3.S:f6+ Ke5 4.Hf5# 1...Hc2 2.Sf6+ Ke5+ 3.Se4+ K:e4 4.Hf5# 2...Kd3 3.S:b6+ Gd5 4.W:d5# 1...Kd3 2.Sb4+ Kc4 3.Se5+ Kb5 4.c4# 2...Ke4 3.Sf6+ Ke5 4.Hf5# 3...e:f6 4.We8#. Flight giving key, Battery play, Indirect battery, Cross-checks, Play on same square. [A]
- 3105 GATTI** 1.Ga3! ~ 2.Hg7+ K:g7# 1...Kh6 2.Gc1+ 2.g5 3.H:g5+ 3.Kh7 4.Ga3 ~ 5.Hg7+ K:g7# 2...Kh7 3.Hf6 tempo 3...c6 4.b:c6 tempo 4...g5 5.Hg7+ K:g7# 3...c5 4.b:c6 e.p. tempo 4...g5 5.Hg7+ K:g7#.
- 3106 GATTI** 1.Wf8! Wc4+ 2.Kd5! a1H (Próba tematyczna 2.Kb5? a1H! 3.h8H+ H:h8 4.W:h8+ Kg7 5.K:c4 f2 6.Gb5 f1H+ -+; pole b5 zablokowane przez króla) 3.h8H+ H:h8 4.W:h8+ Kg7 5.Gb5! K:h8 6.K:c4! =. Nie 6.G:c4? e3! 7.Ke4 e2! -+. [A]