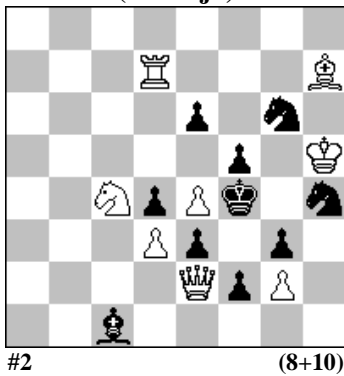


POLSKI ZWIĄZEK SZACHOWY 2024

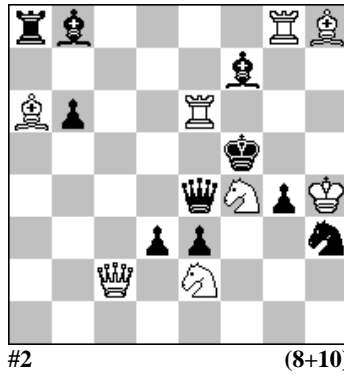
ORYGINALY 4 VI 2024 [3137 – 3142]

3137. Gerard DOUKHAN
(Francja)



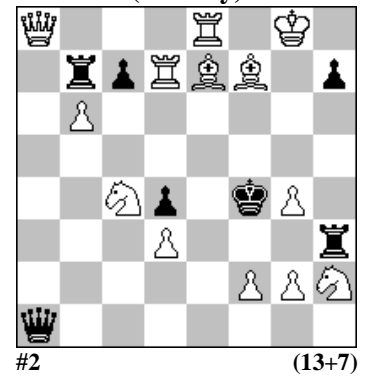
#2 (8+10)

3138. Anatolij WASYLENKO
(Ukraina)



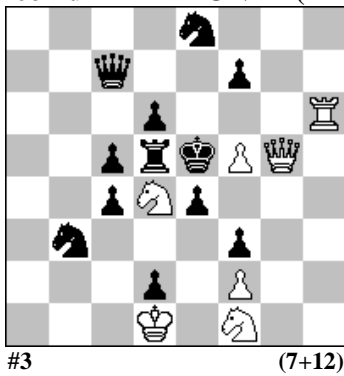
#2 (8+10)

3139. Gerhard MALEIKA
(Niemcy)



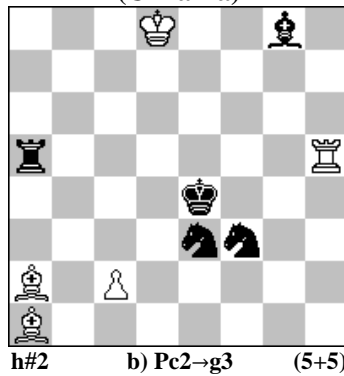
#2 (13+7)

3140. Leonid LIUBASZEWSKI
& Leonid MAKARONEZ (Izrael)



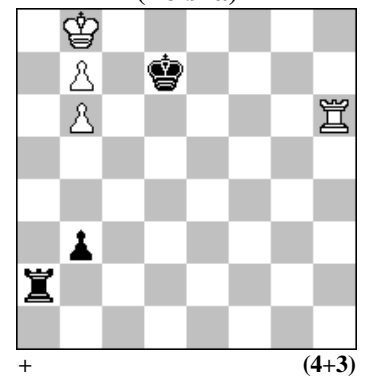
#3 (7+12)

3141. Eugene GAVRYLIV
(Ukraina)



h#2 b) Pc2→g3 (5+5)

3142. Marek KWIATKOWSKI
(Polska)



+ (4+3)

- 3137 DOUKHAN** 1.Wf7? A ~ 2.Hg4# 1...Se5! a 1.e5? B ~ 2.W:d4# C 1...Bb2! 1.W:d4? C ~ 2.e5# B 1...Se5 a 2.e:f5# D 1...Bb2 2.H:e3# 1...f:e4 2.Hg4# 1...e5! 1.e:f5! D ~ 2.Hg4# 1...Se5 a, e:f5 2.W:d4# C 1...K:f5 2.Wf7# A 1...Sf3 2.H:f3#. Combination where are intricate. • First try with thematic defence refutation 1.Rf7? A 1...Se5! a; • Threat correction (e5? B [2.Rxd4‡ C] 1...Bb2! / 1.exf5! D 1...Se5 2.Rxd4‡ C); • Threat Reversal theme (1.e5? B [2.Rxd4‡ C] / 1.Rxd4? C [2.e5‡ B]); • Variation Reversal 2 theme with ampliative key (1.Rxd4? C 1...Se5 a 2.exf5‡ D / 1.exf5! D 1...Se5 a 2.Rxd4‡ C); • All keys A , B , C , D are mates in at least one other phase. [A]
- 3138 WASYLENKO** 1.H:d3? A ~ 2.H:e4# C 1...H:d3 a 2.G:d3# B 1...Ge5 2.W:e5# D – związanie 1...Sf2/g5 2.Wg5# 1...G:e6! C 1.G:d3? B ~ 2.G:e4# 1...H:d3 a 2.H:d3# A 1...G:f4 /S:f4 2.Sd4# – związanie 1...Sf2/g5 2.Wg5# 1...Wa4! 1.Hc8? ~ 2.We5# D 1...H:e6 b 2.G:d3# B – samozwiązanie 1...G:e6 c 2.Wf8# – samozwiązanie 1...d:e2! D 1.Gc8! ~ 2.We5# D 1...H:e6 b 2.H:d3# A – samozwiązanie 1...G:e6 c 2.Wf8# – samozwiązanie 1...d:e2 d 2.H:e4# C. Reciprocal changes of two mates, spread over 4 phases (Einat theme): aB–aA–bB–bA. Reversal 1 (Salazar theme): AB-BA. Pseudo Erochin theme: AD-DA Pseudo le Grand theme: CD-DC. Changed functions of moves: c,d. Single square mechanism: d3, e4, c8. [A]
- 3139 MALEIKA** 1.Wf8! ~ 2.Gf~# 1...H:a8 2.Ge8/W:d4# 1...Ha5 2.W:d4/Gd5# 1...W:d3 2.Gd5/Gg6# 1...Wh6 2.Gg6/g3# 1...Wh5 2.g3/G:h5# 1...W:h2 2.Gh5/Ge6# 1...W:b6 2.Ge6/He4# 1...Wb8 2.He4/Ge8#.
- 3140 LIUBASZEWSKI & MAKARONEZ** 1...S:d4 2.Hg3+ K:f5 3.Se3# 1.Se3? K:d4! 1.Sg3! ~ 2.S:f3+ e4:f3 3.He3# 1...S:d4 2.Wh4! ~ 3.Wh4:e4# 2...Sf6 3.Hf4# 1...c:d4 2.We6+ f:e6 3.f6# 1...W:d4 2.f6+ K.e6 3.Hf5# 1...K:d4 2.He3+ Kd4. 3.H:e4# 1...Sf6 2.H:f6+ K.f4 3.Wh4#. Defences on same square, Selfblock, Mates on the same square e3,e4. [A]
- 3141 GAVRYLIV** a) 1.Wf5 a Gc4 B 2.Wf4 c Gd3# D b) 1.Gc4 b Wf5 A 2.Gd3 d Wf4# C. Orthogonal-diagonal transformation. Rope theme. Stavrinides theme. [Dokładniej: Help. An].
- 3142 KWIATKOWSKI** 1.Wh7+!! (próba logiczna: 1.Wh5? b2! 2.Wb5 Kc6! =; logiczny wybór: 1.Wh4? b2! 2.Wb4 Kd8 3.Wd4+ Ke7! 4.Kc8 b1H = pozycja X1; logiczny wybór: 1.Wh3? b2! 2.Wb3 Kd8 3.Wd3+ Ke7! 4.Kc8 b1H = pozycja X2) 1...Kd8 2.Wh5! Kd7! (2...b2? 3.Wd5+! Ke7 4.Kc8,c7 b1H pozycja X3 5.b8H +-) 3.Wd5+! (3.Wb5? b2! =) 3...Ke7 4.Wb5! Wb2! (4...Kd7 5.W:b3 Wa4 [Duras - 1902] 6.Wd3+ Ke7 7.Wd6! Wc4 5.Wc6! W:c6 6.Ka7! +-) 5.Wa5! Wa2! 6.Wa7! (6.W:a2? b:a2 7.Kc8 a1H 8.b8H Hh8+ =) 6...b2 7.Kc8! (logiczny wybór: 7.Kc7? W:a7! = [7...b1H? 8.b8H Hc2+ 9.Kb7 W:a7+ 10.H:a7! +-]) 7...b1H (7...W:a7 8.b8H! +-) pozycja X4 8.b8H+ - teraz promocja z szachem! +-. Logiczna miniatura oparta na kluczowej pozycji X z czterema różnymi ustawieniami białej wieży. [A]