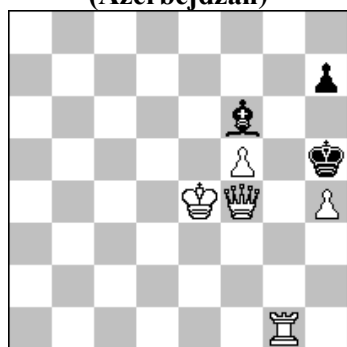


3063. Elmar ABDULLAJEW
(Azerbejdżan)



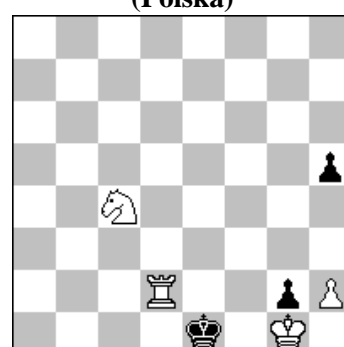
#2 (5+3)

3064. Rauf ALIOVSADZE (USA)
& Leonid MAKARONEZ (Izrael)



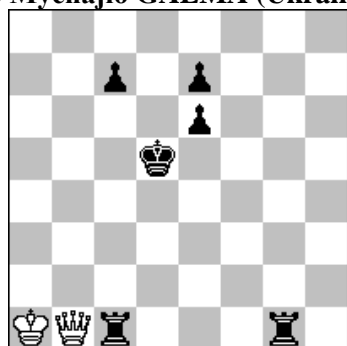
#3 (12+8)

3065. Marian FRAK
(Polska)



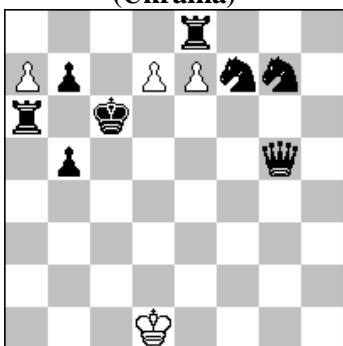
s#6 b) + b. Pg2 (4+3)

3066. Mykola WASIUCZKO
& Mychajło GALMA (Ukraina)



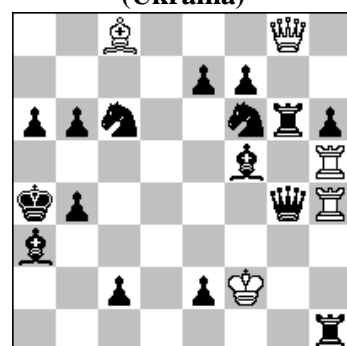
h#2 b) Kd5→g8 (2+6)

3067. Jurij BIŁOKIN
(Ukraina)



h#2 2 rozwiązania (4+8)

3068. Evgeny GAVRYLIV
(Ukraina)



h#2 2 rozwiązania (5+16)

3063 ABDULLAJEW 1.Wg7! ~ 2.W:h7# 1...h6 2.Hg4# 1...Gg5,;g7 2.H:g5#.

3064 ALIOVSADZADE & MAKARONEZ 1.W:c3! ~ 2.H:f5+ H:f5 3.W:e3# 1...Ge5 2.Sd2+ e:d2 3.Gb1# 1...Gf4 2.Hh1+ Ke5 3.Hd5# 1...H:c3+ 2.S:c3+ Ke5 3.H:f5# 1...W:a3 2.H:b7+ Wd5 3.Hd5# 1...H:e6 2.W:e3+ Kd4 .Wd1# 2...Kf4 3.W:e6#. ANI-Problem (per P.Petkov)-composition with anti - identical variations. [A]

3065 FRAK a) 1.W:g2? Kd1! 1.K:g2! h4 2.Kg1 h3 3.Kh1 Kf1 4.Se5 Ke1 5.Sf3+ Kf1 6.Wg2 h:g2# b) 1.g3! h4 2.g4 h3 3.Kh1 Kf1 4.Se5 Ke1 5.Sf3+ Kf1 6.Wg2 h:g2#.

3066 WASIUCZKO & GALMA a) 1.Wc6 H:g1 2.Kd6 Hd4# b) 1.Kh8 H:c1 2.Wg8 Hh6#. Chumakov theme (r-r, simplified, 2, 2). Model mate × 2 [A]

3067 BIŁOKIN 1.Wb8 d8H 2.Hc5 a:b8S# 1.Kc7 d8W 2.Wc6 a8S#. Active sacrifice (black, delayed). Exchange of functions (bQg5/bRa6, Passive / Self-block). Promotion (QRSS, 4). [A]

3068 GAVRYLIV 1.G:c8 (G~?) H:g6 2.Hd7 (H~?) H:c2# 1.W:g8 (W~?) G:f5 2.Hg7 (H~?) G:c2#. Allowing hideaway (black-black) × 2. Annihilation. Bristol (black, bB-bQ, pure, 3, 3). Bristol (black, bR-bQ, pure, 2, 3). Exchange of functions (bBf5/bRg6, Captured / Line opening). Exchange of functions (wBc8/wQg8, Captured / Mate). Hideaway (bB, capturing). Hideaway (bQ) × 2. Hideaway (bR, capturing). Play on the same square (W2, 2). Reciprocal capture (wB/bB). Reciprocal capture (wQ/bR). Zilahi (passive, QB, 2).

Model pin mate on the same square × 2.Wg HA.