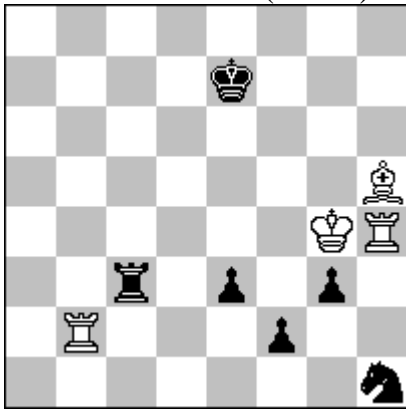


Michael Pasman (Izrael)



= (4+6)
8/4k3/8/7B/6KR/2r1p1p1/1R3p2/7n

1. Rb7+ Rc7 \$1 (1... Kd6 2. Bf7 \$3 {black can't avoid perpetual check :} f1=Q (2... Rc8 3. Rh6+ Kc5 4. Rh5+ Kd4 5. Rxf1 g2 6. Rd1+ \$11 (6. Rd7+ Kc3 7. Rc1+ Kb2 \$19)) (2... g2 3. Rh6+ Kc5 4. Rh5+) 3. Rh6+ Kc5 4. Rc7+ Kb4 5. Rb7+ Ka3 6. Ra7+ Kb4 (6... Kb2 7. Rb6+) 7. Rb7+ \$11 {Perpetual check} (7. Rb6+ \$2 Kc5)) 2. Rxc7+ Kd6 3. Rc4 \$3 (3. Rf7 g2 4. Rf6+ Ke7 5. Kg5 f1=Q \$19) (3. Rg7 f1=Q) (3. Rc1 g2 \$19) (3. Rxf1 g2 \$1 4. Rcc1 gxh1=Q 5. Rxf1 e2 \$19) 3... g2 (3... f1=Q 4. Kg5 \$1 {black can't avoid perpetual check :} Nf2 (4... g2 5. Rhd4+ Ke7 6. Re4+ Kd8 7. Red4+ \$11) 5. Rhd4+ Ke5 6. Bf3 \$1 g2 (6... Nh3+ 7. Kg4 Nf2+ 8. Kg5 \$1 Nh3+ 9. Kg4 \$11 {perpetual check}) 7. Rd5+ Ke6 8. Rc6+ Ke7 9. Rc7+ Ke6 10. Rc6+ \$11 {Perpetual check}) (3... e2 4. Rd4+ Kc5 (4... Ke5 5. Re4+ \$1 Kxe4 6. Kh3+ Ke3 7. Re4+ \$1 Kxe4 8. Bxe2 \$11) 4. Rd4+ Ke5 5. Re4+ \$1 Kd6 (5... Kf6 6. Rf4+ Kg7 7. Kh3 \$1 f1=Q 8. Rfg4+ \$1 Kf8 9. Rf4+ Ke7 10. Re4+ Kd6 11. Rd4+ \$11) (5... Kxe4 6. Kh3+ {as main}) 6. Rd4+ \$1 Kc5 7. Rc4+ \$1 Kd6 8. Rd4+ Ke5 9. Re4+ Kxe4 10. Kh3+ Ke5 \$1 11. Kxg2 Ng3 \$1 12. Be2 \$1 (12. Rh1 Nxf1 13. Be2 Kf4 \$1 14. Kxf1 Kg3 \$1 {zz}) 12... Nxe2 13. Rh5+ \$1 ({Logical try :} 13. Rh1 Nc3 14. Rf1 {Position X1} Ne4 \$1 15. Kf3 Kd4 16. Rd1+ Nd2+ \$19 {and f1=Q}) 13... Ke4 (13... Kd4 14. Rf5 \$11) 14. Rh1 \$1 Nc3 (14... Nf4+ 15. Kf1 \$1 Kf3 16. Rh3+ \$1 \$11) 15. Rf1 \$1 {Position X2, black hasn't move Ne4 now, but he still can play :} Nd1 16. Rxd1 e2 17. Rd4+ \$1 Ke3 18. Re4+ \$1 Kxe4 (18... Kd2 \$4 19. Kxf2) 19. Kxf2 Kd3 20. Ke1 1/2-1/2