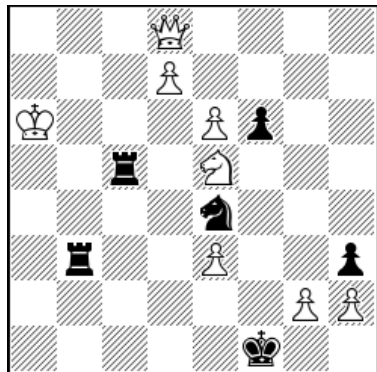


3256 - 12 XI 2024

PALLIER Alain



+ - (8+6)

W : Ka6,Qd8,Ne5,d7,e3,e6,g2,h2

N : Kf1,Rb3,Rc5,Ne4,f6,h3

[+1604.52 a6f1]

FEN 3Q4/3P4/K3Pp2/2r1N3/4n3/1r2P2p/6PP/5k2 w - - 0 1

1.Nc4! hxc2

1...Rxc4 2.Qa5! Nc5+ 3.Ka7 Rb7+ 4.Ka8 Rxd7 5.exd7 Nxd7 6.Qf5+ +-

1...Rc6+ 2.Ka5 hxc2 and, eg, 3.Qa5 +-

2.Nd2+! Nxd2

3.Qxf6+ Kg1

3...Ke2 4.Qg6(7) +-

4.d8Q

4.e7? Ra3+ 5.Kb6 Rb3+ 6.Kxc5 Ne4+ 7.Kc6 Nxf6 8.d8Q Kh1 9.Qd1+ g1Q 10.Qxb3 Qg2+ =

4...Ra3+

4...Rc6+ 5.Ka7 Ra3+ 6.Kb7 Rc2 and, eg, 7.Qb6 Rb3 8.e7 Rxb6+ 9.Qxb6 Kh1 10.Qg6 Rb2+ 11.Kc7 g1Q 12.Qxg1+ Kxg1 13.e8Q +-

5.Kb6

5.Kb7?! Rb3+ 6.Ka6 is a loss of time.

5...Rc2!

6.e7!

a6 square must be accessible for Qf6.

6...Rb3+

7.Ka7!

7.Ka6? Ra2+! 8.Qa5 Rxa5+ 9.Kxa5 and, eg, 9...Rxe3=

7...Ra2+

8.Qa6 Rba3!

9.Qxa3

9.e8Q? Rxa6+ 10.Kb7 and, eg, 10...Ra7+ 11.Kb6 R7a6+ =

9...Rxa3+

10.Kb8!!

Thematic try : 10.Kb7? Rxe3! 11.Qb6(d4) Nc4! :

-12.Qxe3+ Nxe3 13.e8Q Nf1 14.Qe1 Kh1 =

-12.e8Q Nd6+! (with check, thanks to 10.Kb7?) 13.Kc6 Nxe8 14.Qxe3+ Kh1 15.Qf3(e4) Nf6!
16.h4 Kh2=

10...Rb3+

Now 10...Rxe3 11.Qb6(d4) Nc4 12.e8Q(R) +-

11.Kc7(8) Rc3+**12.Kd7! Rxe3**

-12...Kh1 13.e8Q Rd3+ 14.Kc6(7,8) Rxd8 15.Qxd8 g1Q 16.Qxd2 +-
-12...Kf2 13.e4 g1Q 14.Qb6+ Re3 15.e8Q Nf3 16.Qf7 Qg4+ 17.Qf5 +-
-12...Rd3+ 13.Ke8(Kc6) Rxd8+ 14.exd8Q +-
13.Qb6!

13.e8Q? Rxe8 14.Qxe8 and, eg, 14...Nf3 =

13...Nc4**14.Qxe3+! Nxe3****15.e8Q Nf1**

15...Kxh2 16.Qe5+ (16.Qh5+? Kg3 =) +-
16.Qe4 Kxh2

17.Qh4+ +-