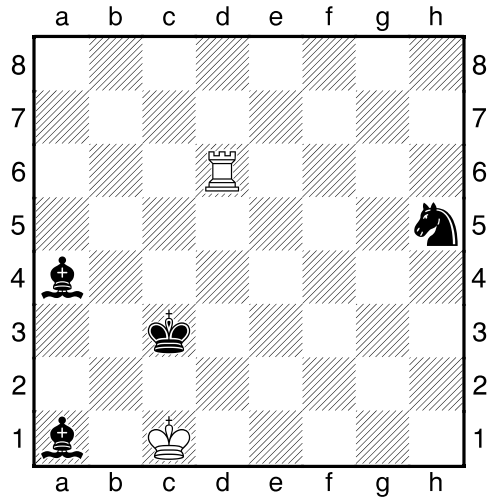


Rainer Staudte & Michael Schlosser
Chemnitz (Germany)
Original for „POLISH CHESS FEDERATION TOURNAMENT 2024“



Draw (2+4)

- | | |
|-------------------|------------------------------|
| 1.Kb1 (1) | Bb2 |
| 2.Rd5! (2) | Ng3 most stubborn (3) |
| 3.Rc5+ | Kb4 |
| 4.Rg5 | Ne4 |
| 5.Rg4 | Kc3 |
| 6.Rxe4! | Bc2+ |
| 7.Ka2 | Bxe4 stalemate A |

(1) 1.Rh6? Bb2+ 2.Kb1 Nf4! 3.Rh4 Bc2+! 4.Ka2 Bc1!

(2) 2.Rh6? Nf4! 3.Rf6 Nd3 4.Rf3
 3...Ne2? 4.Rf3+!
 3...Bc2+ 4.Ka2 Bb3+ 5.Kb1 Nd3
 3.Rh4 Bc2+!

(3) 2...Nf6 3.Rf5! (threatens Rf3+ followed by Kxb2) Kb3 4.Rb5+! Bxb5 stalemate B
 4.Rf3+? Bc3!
 3...Bc2+ 4.Ka2 Bxf5? stalemate A
 2...Nf4 3.Rc5+! Kb4 4.Rf5! wins a piece
 3...Kd4 4.Ra5! wins a piece
 2...Ng7 3.Rg5! Kb3 4.Rb5+! Bxb5 stalemate B
 4.Rg3+? Bc3!
 2...Bc2+ 3.Ka2 Bb3+ 4.Kb1 Bxd5? stalemate echo A
 4...Nf4 5.Rc5+! Kb4 6.Rf5!