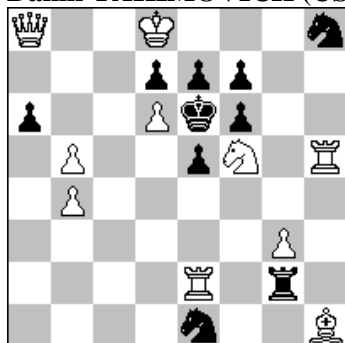


POLSKI ZWIĄZEK SZACHOWY 2024

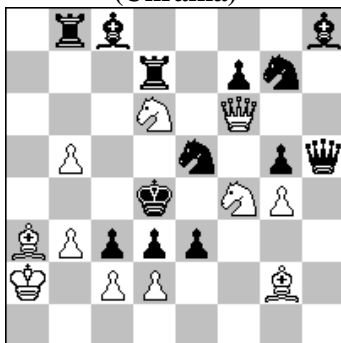
ORYGINAŁY 1 X 2024 [3215 – 3220]

3215. Rauf ALIOVSADZADE & Daniil YAKIMOVICH (USA)



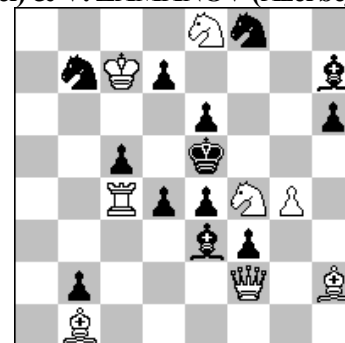
#2 (10+10)

3216. Petro NOWICKIJ (Ukraina)



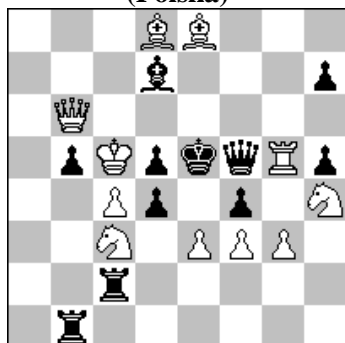
#2 (11+13)

3217. L. LIUBASZEWSKIJ, L. MAKARONEZ (Izrael) & V. ZAMANOV (Azerbejdżan))



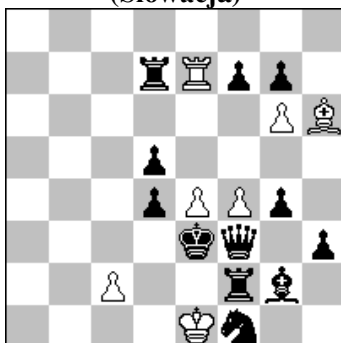
#3 (8+13)

3218. Waldemar TURA (Polska)



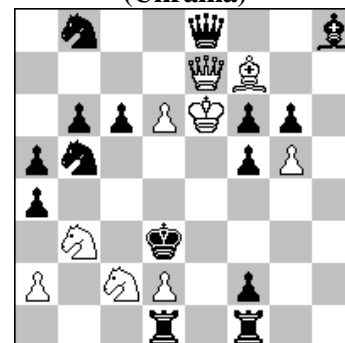
s#3 (11+11)

3219. Zoltan LABAI (Słowacja)



h#2 4 rozwiązania (7+12)

3220. Eugene GAVRYLIV (Ukraina)



h#2 b,c) Pf2→d5,c5 (9+15)
d) Sb5→f3

- 3215 ALIOVSADZADE & YAKIMOVICH** 1...W~ a, b 2.Hd5#/2.Gd5# 1...e:d6 c 2.Sd4# A /2.Sg7# B 1...e4 2.H:e4#/2.W:e4# 1.Kc7? ~ 2.Sd4# A/2.Sg7# B 1...e:d6! c 1.H:a6! ~ 2.Ha2# 1...W:g3 a 2.Sd4# A (2.Sg7+?) 1...W:e2 b 2.Sg7# B (2.Sd4+?) 1...e:d6 c 2.H:d6# C 1...e4 2.Sd4# A/2.Sg7# B 1.d:e7? ~ 2.e8H# 1...Sg6! 1.S:e7? ~ 2.Hd5# 1...f5! Transferred mates with dual separation, changed mates, Rudenko, Dombrovskis paradox. Set play duals are separated in the solution for different new defences - an analog of Makihovi-Ellerman with transferred mates instead of changed mates. Rudenko (~A~B-AB), Dombrovskis paradox (cAB~A~Bc!). [A]
- 3216 NOWICKIJ** 1.Sc4? ~ 2.H:e5# A/2.d:e3# B 1...g:f4 2.H:f4# 1...Sf5! 1.Sd5? ~ 2.d:e3# B/2.d:c3# C 1...c:d2 2.c3# 1...e:d2 2.Hf2# 1...d:c2! 1...Se4? ~ 2.d:c3# C/2.Gc5# D 1...Wc7 g 2.Hd6# F 1...g:f4! 1.S:d3! ~ 2.Gc5# D/2.H:e5# A 1...W:b5 2.S:b5# 1...Se6 2.Sf5#. Чотирьохфазний цикл подвійних загроз з довільною зміною матів. [A]
- 3217 LIUBASZEWSKIJ, MAKARONEZ & ZAMANOV** 1.W:d4! ~ 2.Se2+ Gf4 3.G:f4# 1...G:d4 2.Hh4! ~ 3.Hf6# 1...c:d4 2.Sd3+ Kd5 3.Ga2# 1...K:d4 2.H:b2+ Kc4 3.Ga2# 1...G:f4 2.Wd6! ~ 3.H:b2# 2...G:h2 3.H:h2# 2...c4 3.Hd4# 2...S:d6 3.H:c5#. Defences on same square d4, Sacrifice key. [A].
- 3218 TURA** 1.Wg8? Hh3! 1.Wg4! ~ 2.Gf6+ H:f6 3.Hd6+ H:d6# 1...H:g4 2.g:f4+ H:f4 3.e:d4+ H:d4# 1...Gc6 2.e:d4+ Ke6 3.c:d5+ H:d5#. Adabaszew 2 x 2. W groźbie i po 1...H:g4 dwa analogiczne warianty z bezpośrednimi matami na d6 i d4. Po 1...Gc6 i 1...Ge6 - przesłona linii b, H, związanie cz. G, gra baterii królewskiej i mat 3...H:d5# z wykorzystaniem białego półzwiązania. Wersja zadania: StrateGems, Oct 2021 (96/S0853) 3B4/1pPBb2p/7Q/1pqkKp1/NPp2P2/1PR2N2/4P3/5rr1. S#3. 1.Ge8!
- 3219 LABAI** 1.Sg3 G:g7 2.K:f4 Gh6# 1.f5 W:d7 2.K:e4 We7# 1.H:e4 Gg5 2.Gf3 f5# 1.H:f4 We5 2.Wf3 e:d5#. HOTF: pierwsza para - zwolnienie pola dla cz. K i switchback. druga - związanie cz.H, Grimshaw, mat z baterii.
- 3220 GAVRYLIV** a) 1.Ke2 a Se1 2.H:f7+ b) K:f7# b 1.H:f7+ b K:f7 2.Kc4 c He2# c) 1.Kc4 c Sc1 2.H:e7+ d K:e7# d) 1.H:e7+ d K:e7 2.Ke2 a Gc4#. The idea of V. Gurov (JT V. Chepizhny - 90, 2024 - 1st prize) is embodied in a new diagonal mechanism and is complicated by the replacement of the white pawns, which are needed in separate phases, with white knights that play in all solutions. The main idea of the problem: the theme of Zilahi against the background of the cyclical alternation of Black's moves. The homogeneity of the twins lies in the remote blocking of the squares. [A]