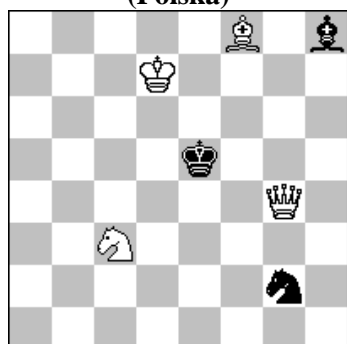


POLSKI ZWIĄZEK SZACHOWY 2023

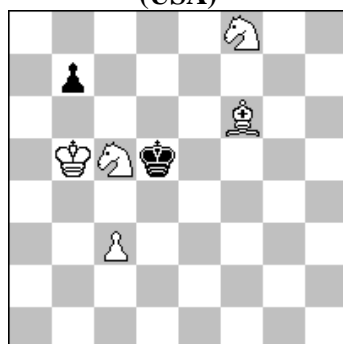
ORYGINAŁY 5 XII 2023 [3006–3011]

3006. Paweł WÓJCIK
(Polska)



#2 (4+3)

3007. Rauf ALIOVSADZADE
(USA)



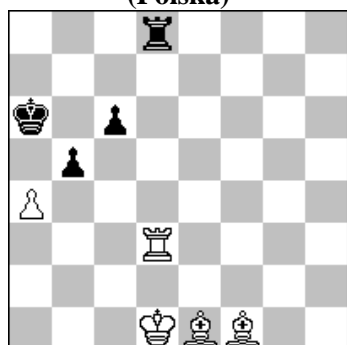
#3 (5+2)

3008. Mykoła WASIUCZKO
& Michajło GALMA (Ukraina)



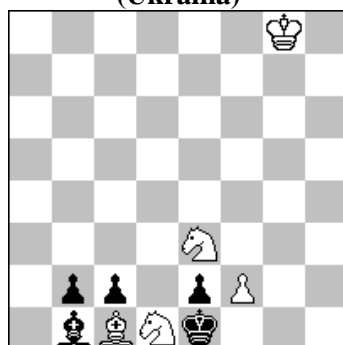
h#2 2 rozwiązania (4+3)

3009. Andrzej BABIARZ
(Polska)



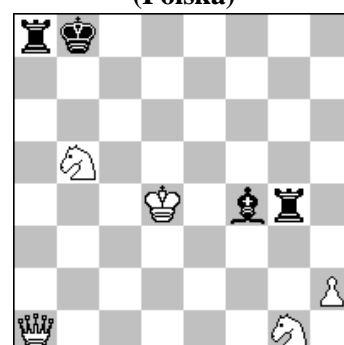
h#2 2 rozwiązania (5+4)

3010. Evgeny GAVRYLIV
(Ukraina)



h#2 2 rozwiązania (5+5)

3011. Marek HALSKI
(Polska)



+ (5+4)

- 3006 WÓJCIK** 1.Gc5? ~ 2.Hg5/Gd4# B 1...Gf6 a 2.He4# A 1...Sf4 b 2.Hg5# B 1...Kf6! c 1.Ge7? ~ 2.He4# A 1...Sf4! b 1.Gh6! tempo 1...S~ 2.H:f4# C 1...Gg7 2.G:g7# 1...Gf6 a 2.He4# A 1...Kf6 c 2.He6#. Aristokratyczna miniatura z wyborem wstępu.
- 3007 ALIOVSADZADE** 1.Sg6! ~ 2.Ge5 A ~ 3.c4# B & 2.c4+ B Kd6 3.Ge5# A 1...Kd6 2.Ge5+ A Kd5 3.c4# B 1...b6 2.c4+ B Kd6 3.Ge5# A. Threats separation, white AB-BA. [A]
- 3008 WASIUCZKO & GALMA** 1.Wd4 g4 2.Wd6 H:f5# 1.Wf6 c4 2.We6 H:f4#. Chumakov theme (r-r, simplified, 2, 2). Exchange of functions bRf4/bRf5: captured - self-block; wPc3/wPg3; guard - passive guard. Model mate × 2. [wg Help. An.] [A]
- 3009 BABIARZ** 1.b:a4 Ga5 2.Kb5 Wd5# 1.b4 a5 2.b3 Wd7#. Milewski - 80 JT theme. Mate by pinned piece x 2. Model battery mate x2., Battery mate x 2, Play on the same square. Gravure. [A]
- 3010 GAVRYLIV** 1.b:c1G Sb2 2.Gd2 Sd3# (1.?? G:b2 2.?? Gc3#) 1.c:d1S G:b2 2.S:f2 Gc3# (1.?? S:b2 2.?? S:d3#). Tempo promotion capture × 2. Bukovina theme × 2. Exchange of functions wBc1/wSd1: captured - mate. Play on the same square (W1, 2). Zilahi (passive, BS, 2). Model mate × 2. [wg Help. An.]
- 3011 HALSKI** vide: 3011 Halski 5 XII 2023