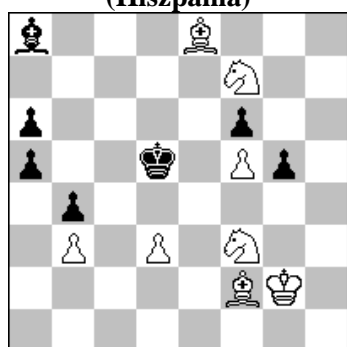
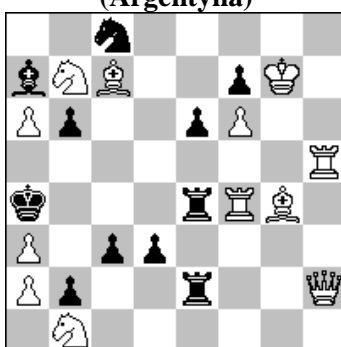


3012. José Antonio GARZON  
(Hiszpania)



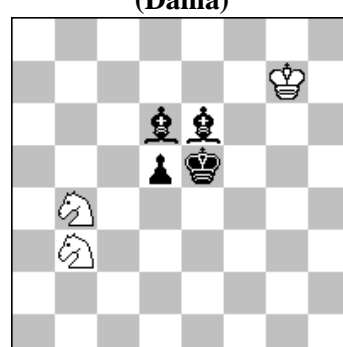
#3 (8+7)

3013. Alberto MALTZ  
(Argentyna)



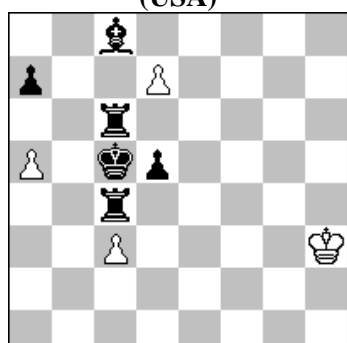
#3 (12+11)

3014. Niels DANSTRUP  
(Dania)



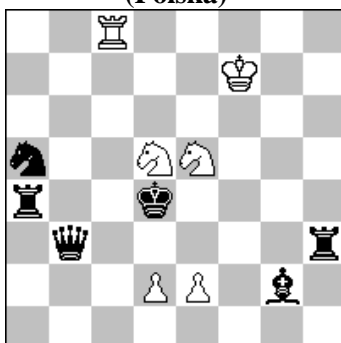
h#2 b) Sb3→c5 (3+4)

3015. Rauf ALIOVSADZADE  
(USA)



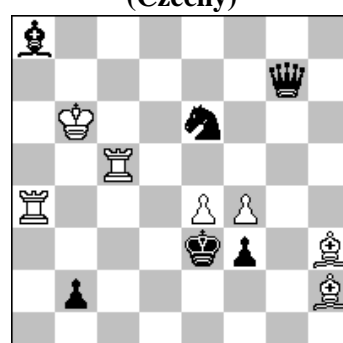
h#2 b) Wc6→c7 (4+6)

3016. Tadeusz LEHMANN  
(Polska)



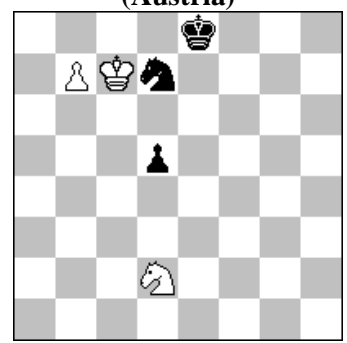
h#2 b) Kf7→c7 (5+5)

3017. Michal DRAGOUN  
(Czechy)



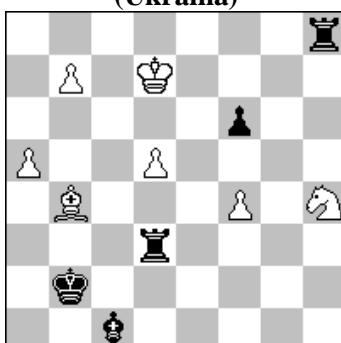
h#2 4 rozwiązania (7+6)

3018. Peter KRUG  
(Austria)



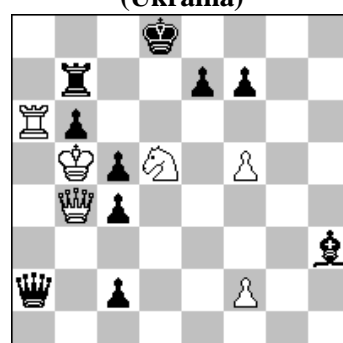
+ (3+3)

3019. Eduard EILAZYAN  
(Ukraina)



= (7+5)

3020. Vladislav TARASIUK  
(Ukraina)



= (6+10)

- 3012 **GARZON** 1.Sh2? ~ 2.Sg4 ~ 3.S:f6# 1...Bc6! a 1.Sd4! ~ 2.Se6 ~ 3.Sc7# A 1...Kc5+ 2.Sc6+ Kd5 3.Se7# B - knight's soliloquy 2...Kb5 3.Sd6# C 1...Bc6 a 2.S:c6 ~ 3.Se7# B. Knight's soliloquy. Anderssen —Siers battery— Mirror mate—Flight giving key—Check exposition—Black swichback—Knight's mates in triangle d6-c7-e7—Only minor pieces. [A]. {Author's note: This soliloquy presents the novelty that the check, a requirement of the soliloquy after the key, is given by the black King. Soliloquy Theme (#3) - Stipulations (summary): 1) All three white plays are executed by the same piece (King, Queen, Rook, Bishop, Knight or Pawn); 2) The key enables a check for black, which did not exist in the initial position. The main line of the composition is built on the sequence arising from this check, otherwise it would be a Pseudo Soliloquy; 3) The white piece that executes the soliloquy, which is the one that gives or causes the mate, cannot capture any pieces throughout the solution. }
- 3013 **MALTZ** 1. H:e2? W:f4! 1. G:e2? e5! 1.Hf2! ~ 2.Hd4+ W:d4 3.W:d4# 1...We3 2.H:b2 c:b2 3.Gd1# 1...e5 2.Hc5 b:c5 3. Gd7# 1...b5 2. Hc5 G:c5 3. S:c5# 1...W:f4 2. H:f4+ We4 3. H:e4# 1...Sd6 2.G:d6 Wc2 3.W:e4# 2..Wb4 3. W:b4#.
- 3014 **DANSTRUP** a) 1.Gd7 Sc6+ 2.Ke6 Sd4# b) 1.d4 Kg6 2.Gd5 Sd3#. Blocking piece replacement (black Pawn and black Bishop). Ideal chameleon echo mates. [A]
- 3015 **ALIOVSADZADE** a) 1.Ga6 d8S 2.Gb5 Sb7# b) 1.Wb4 d:c8H 2.Wb5 H:c7#. Chumakov theme in a twins form. [A]
- 3016 **LEHMANN** a) 1.K:d5 d4 2.Ge4 Wd8# b) 1.K:e5 e4 2.Wd4 We4#. Zamiana funkcji trzech par bierek: Gg2 - Wa4, Pd2 - Pe2 i Sd5 - Se5. Echo kameleonowe.
- 3017 **DRAGOUN** 1.Hd4 Wa3+ 2.K:e4 Gf5# 1.Hg3 Gg1+ 2.K:f4 Wf5# 1.G:e4 W:e4+ 2.Kf2 Wc2# 1.S:f4 G:f4+ 2.Kd3 Gf1#. 2+2 solutions with diagonal/orthogonal analogy, reciprocal function exchange between white pieces and repeated play on squares e4/f4. In I and II, selfblocks by black queen and mates from the same square, in III and IV, captures on e4/f4 as a access preparation to those squares for white pieces. [A]
- 3018 **KRUG** 1.Sf3! (1.Kd6? d4 2.Se4 d3 3.Sf6+ Kf7! 4.S:d7 d2 5.Se5+ Kg7! 6.b8H d1H+) 1...Ke7 2.Kc6 Sb8+ 3.Kc5! (3.K:d5? Kd7) 3...Kd7 4.Kb6 Kd6 5.Ka7 Sd7 6.Sg5 Ke7 (6...d4 7.Se4+ Kc6 8.Sf6 d3 9.S:d7 d2 10.b8H d1H 11.Se5+ Kc5 12.Hb6+ Kd5 13.Hd8+! +- ) 7.Sh3! Kd6 (7...d4 8.Sf2 Ke6 9.Se4 Se5 10.Kb8) 8.Sf2 Kc5 9.Sg4 d4 10.Ka8! (10.Sf6? Se5 11.Kb8 Sc6+ 12.Kc7 d3 13.Sd7+ Kd5 14.Se5 d2 15.S:c6 d1H) 10...d3 11.Sf6! (11.Se5? d2 12.S:d7+ Kd5! nie 12...Kc4 13.Sb6+ Kc3 14.Sa4+ Kc2 15.Sb2) 11...Kc4 (11...d2 12.Se4+) 12.S:d7 d2 13.Sb6+ Kc3 14.Sa4+ Kc2 15.Sb2 +- 1-0.
- 3019 **EILAZYAN** vide: 12 XII 2023 - -3019 EILAZYAN
- 3020 **TARASIUK** 1.Hd2! (Próba: 1.Hc3? Hb3+ 2.Kc6 Wc7+! 3.S:c7 Gg2+ 4.Sd5 G:d5+ 5.K:d5 H:c3 -+) 1...c1H! (1...c3 2.S:c3+ Wd7 3.H:d7+! K:d7 4.S:a2 Gf1+ 5.K:b6 G:a6 6.K:a6 =) 2.H:c1 (2.H:a2? Gg2! 3.Wa8+ Kd7 4.Wd8+ K:d8 5.Ha8+ Kd7 6.H:b7+ Kd6 7.Hc6+ Ke5 8.f4+ Kd4! =) 2...Hb3+ 3.Kc6 Wc7+! 4.S:c7 Gg2+ 5.f3!! (Próba logiczna: 5.Sd5? G:d5+ 6.K:d5 Hf3+ 7.Ke5 f6+ 8.Ke6 Ke8! 9.Hh1 H:h1 10.Wa8+ H:a8 - nie ma pata - pf2!) 5...G:f3+ 6.Sd5 G:d5+ 7.K:d5 Hf3+ 8.Ke5! (8.K:c4? He2+ -+) 8...f6+ (gra główna: 8...Ke8 9.W:b6 [9.H:c4? f6+ 10.Ke6 Hc6#] 9...f6+ 10.W:f6! [10.Ke6? He4#] 10...e:f6+ 11.K:f6 =) 9.Ke6 Ke8! 10.Hh1! (Próba: 10.Wa8+? H:a8 11.Hh1 Hc8+! -+; 11...H:h1? pat) 10...H:h1 11.Wa8+! H:a8 pat.