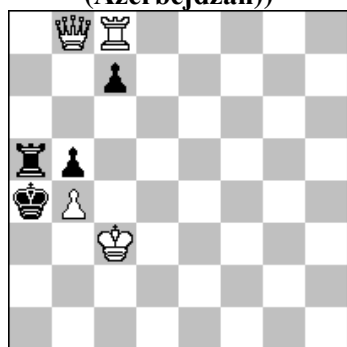


POLSKI ZWIĄZEK SZACHOWY 2023

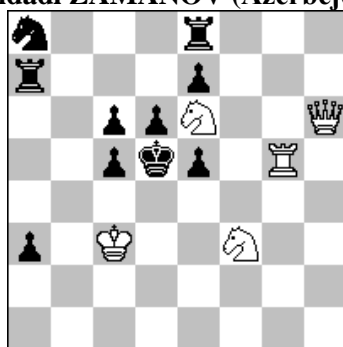
ORYGINAŁY 30 V 2023 [2868 – 2873]

2868. Elmar ABDULLAJEW
(Azerbejdżan)



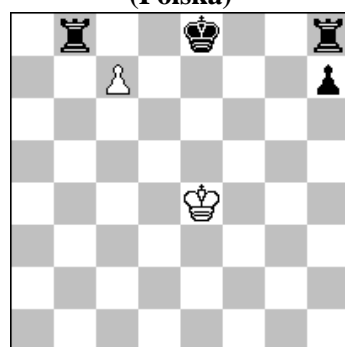
#2 (4+4)

2869. Leonid MAKARONEZ (Izrael)
& Vidadi ZAMANOV (Azerbejdżan)



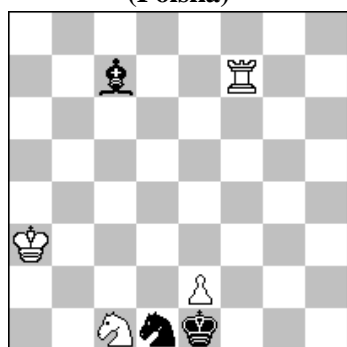
#3 (5+10)

2870. Andrzej BABIARZ
(Polska)



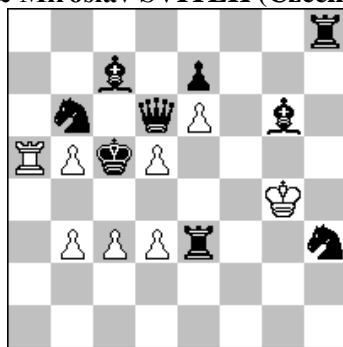
h#2 2 rozwiązania (2+4)

2871. Stefan MILEWSKI
(Polska)



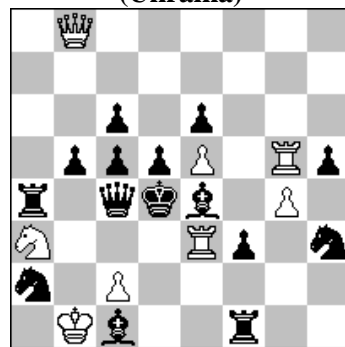
h#2 2 rozwiązania (4+3)

2872. Zoltan LABAI (Słowacja)
& Miroslav SVITEK (Czechy)



h#2 4 rozwiązania (8+9)

2873. Evgeny GAVRYLIV
(Ukraina)



h#2 2 rozwiązania (8+15)

- 2868 ABDULLAJEW** 1...Wa7 2.H:a7# 1...Wa8 a 2.H:a8# A 1.Hb7? tempo 1...Wa6 2.H:a6# 1...Wa7 2.H:a7# 1...Wa8 a 2.W:a8# B 1...Ka3! 1.Hb6? ~ 2.H:a5# 1...Wa6 2.H:a6# 1...Wa7 2.H:a7# 1...Wa8 a 2.W:a8# B 1...Ka3 2.H:a5# 1...c:b6! 1.H:c7? ~ 2.H:a5# 1...Wa7 2.H:a7# 1...Wa8 a 2.W:a8# B 1...Ka3 2.H:a5# 1...Wa6! 1.Ha8! ~ 2.H:a5# 1...Wa6 2.H:a6# 1...Wa7 2.H:a7# 1...W:a8 2.W:a8# 1...Ka3 2.H:a5#. Тема Калинина с жертвой ферзя. Задача гравюра. [A]
- 2869 MAKARONEZ & ZAMANOV** 1...Ke4 2.Sd2+ Ke3 3.Wg2# 1.Hh5! ~ 2.W:e5+ d:e5 3.H:e5# 1...K:e6 2.Hg4+ Kf6,Kf7 3.Hf5# 2...Kd5 3.Hc4# 1...Ke4 2.Sd2+ Ke3 3.Hf3# 2...Kd5 3.Sf4#.
- 2870 BABIARZ** 1.Wd8 c8H 2.Wf8 He6# 1.0-0 c:b8H 2.Kh8 H:f8#. Temat Czumakowa z matami wzorowymi samym hetmanem w miniaturze. [A]
- 2871 MILEWSKI** 1.K:d2 S:b3 + 2.K:c3 W:c7# 1.G:a5 W:f2 2.G:d2 S:d3#. Zamiana funkcji Sc1 i Wf7 z matami wzorowymi.
- 2872 LABAI & SVITEK** 1.Sf4 Kg5 tempo 2.Sf:d5 d4# (2...b4?) 1.We5 Kf3 tempo 2.W:d5 b4# (2...d4?) 1.Ge8 Kf5 tempo 2.Gc6 b:c6# 1.Wa8 Kh4 tempo 2.Wa6 b:a6#. Active sacrifice (black) × 2. Allowing tempo (B-W) × 4. Exchange of functions (bBg6/bRh8, Active sacrifice / Passive). Exchange of functions (bRe3/bSh3, Passive / Self-block). Exchange of functions (wPb3/wPd3, Mate / Passive guard). HOTF. Play on the same square (B2, 2). Tempo move (wK, waiting) × 4. Model mate × 2. Battery mate × 2. [wg HA]
- 2873 GAVRYLIV** 1.b4 H:b4 2.G:c2+ (G- ?) S:c2# 1.h:g4 W:g4 2.Hd3 (H- ?) W:d3#. Active sacrifice (black) × 4. Chumakov theme (b-q, simplified, 2, 2). Exchange of functions (bQc4/bBe4: Active sacrifice / Passively pinned). Exchange of functions (wSa3/wRe3: Mate / Passive guard). Hideaway (bP, sacrificial). Hideaway (bQ, sacrificial). JT Onkoud 50 theme. Sacrificial clearance (B-W). Pin-mate × 2. [wg HA]