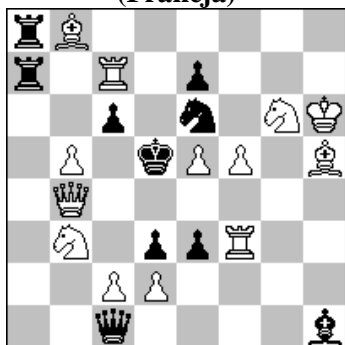


POLSKI ZWIĄZEK SZACHOWY 2023

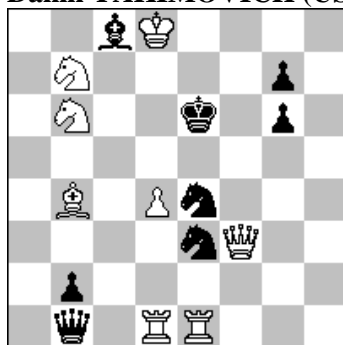
ORYGINAŁY 3 X 2023 [2952 –2957]

2952. Gérard DOUKHAN
(Francja)



#2 (13+10)

2953. Rauf ALIOVSADZADE
& Daniil YAKIMOVICH (USA)



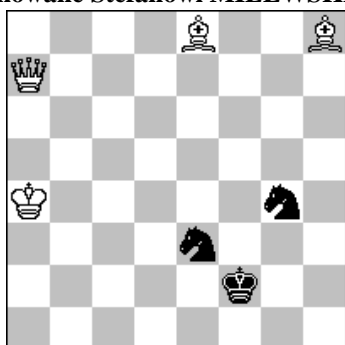
#3 (8+8)

2954. Rauf ALIOVSADZADE (USA)
& Leonid MAKARONEZ (Izrael)



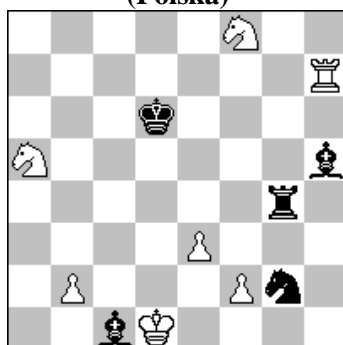
#3 (10+8)

2955. Waldemar TURA
Dedykowane Stefanowi MILEWSKIEMU



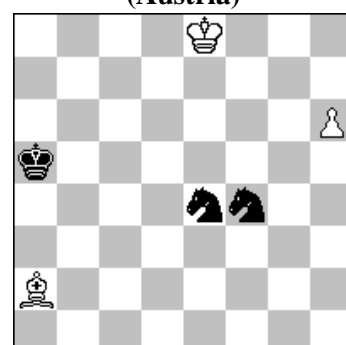
h#2 b) cz. Pe3 (4+3)

2956. Waldemar TURA
(Polska)



h#2 b,c) Sf8→d8,d4 (7+5)

2957. Peter KRUG
(Austria)



+ (3+3)

- 2952 DOUKHAN** 1.W:c6? ~ 2.Hc4# A (nie 2.S:e7+? B W:e7!) 1...Wa4 2.S:e7# B 1...H:e2! 1.W:e3? ~ 2.S:e7# B (nie 2.H:e4+? C G:e4!) 1...Ge4 2.H:e4! C 1...W:c7! 1.c:d3! A ~ 2.He4# C (nie 2.H:c4+? A H:c4!) 1...Hc4 2.H:c4# A 1...G:f3 2.G:f3# 1...Wa4 2.Wd7# 1...Sd4, Sc5, Sg5 2.Hd4#. Complete Cyclic Sushkov with a new and homogeneous scheme (all white moves open line to black pieces!): this involves a cycle of threats dual avoidance linked with a cyclic Pseudo-Le Grand AB-BC-CA. • Cyclic Caprice theme: after the first moves, the refutations take white pieces to control respectively the lines d2-c3, b7-c6 and f6-e5. The White keys, tries and real play open cyclically these lines! [A]
- 2953 ALIOVSADZADE & YAKIMOVICH** 1.Wf1! ~ 2.Hf7# 1...Sf6 2.Hc6+ Kf7 3.He8# 1...Sf5 2.Hb3+ Kf6 3.Ge7# 1...Sf2 2.Sc5+ Kd6 3.S:c8#. Adabashev, Piatési theme. In Adabashev system the first pair of variations implements Piatési theme (In the initial position, there are two half-pinned black pieces that are unpinned by the key. However, in two thematic variations, each of them, in defending the threat, moves onto same line with key-piece. When the black King is induced to move onto this line as well, a new pinning-situation arises which White takes advantage of in the mate.[A]
- 2954 ALIOVSADZADE & MAKARONEZ** 1.G:a5!- 2.b4+ A Kd4 3.c3# B 1...Kd4 2.c3+ B Kc5 3.b4# A. White AB-BA. 1...Gd5 2.H:a7+ K:c4 3.Wc3# 1...d5 2.Gb4+ K:c4 3.We4# 2...Kd4 3.Hf4# 2...Kb6 3.c5# 1...Wd5 2.We4 ~ 3.b4# 2... Sd3 3.Sb3#. Defenses on same square. [A]
- 2955 TURA** a) 1.Kf1 Gc3 2.Sg2 Gb5# b) 1.Kf3 Ge5 2.e2 Gc6#. Bliźniak Forsberga z uwolnieniami czarnych bierok, blokowaniem, otwieraniem linii H i matami wzorowymi. Całość daje temat Onkoud 50.
Z najlepszymi życzeniami na osiemdziesiątą rocznicę!
- 2956 TURA** a) 1.G:e3 f4 2.Ge5 Wd7# (1.Gb2? b4?? 2.Ge5 Wd7??; 1...e4?) b) 1.G:b2 e4 2.Ge5 Sab7# (1.G:e3? e4?? 2.Gc5 Sc4??; 1...b4?) c) 1.Sf4 b4 2.Sd5 Sc4#. (1.Sf4? f4?? 2.Se4 Sab7??; e4?). Oryginalny cykl pól c5, d5 i e5, które są atakowane przez pionki [P], blokowane [B] i atakowane przez figurę matującą [M]: a) BMP – b) MPB – c) PBM. Ponadto unikanie duali i 3 maty wzorowe.
- 2957 KRUG** 1.Kf7 Sg5+ 2.Kf6 Sh7+ 3.Kg7 Sg5 4.Gg8 Sge6+ (4...Kb4 5.Kf6 Sfh3 6.Ga2! [6.Ge6?]) 5.Kf7 Kb4 6.Ke7 Sg5 (6...Sd4 7.Kf6 +-) 7.Kf6 Sfh3 8.Ga2! (8.Ge6? Se4+ 9.Kg6 Sf4+ 10.Kf5 S:e6 11.h7 S6c5 =) 8...Sh7+ (8...Se4+ 9.Kg6! [9.Kf5? Seg5 10.Kf6 Sh7+ 11.Kg7 S7g5 12.Gb1 Sg1 13.Ge4 S:e4 =] 9...Shg5 [9...Seg5 10.Gd5 Kc5 11.Gg2] 10.Gd5 +-) 9.Kg6! (9.Kg7 S7g5 10.Gb1? Sg1! =) 9...Sf2 (9...S3g5 10.Gg8 +-; 9...S7g5 10.Gd5 Kc5 11.Gg2 +-) 10.Ge6 Sf8+ 11.Kf7 S:e6 (11...Sh7 12.Gf5) 12.K:e6 Se4 13.Kf5 (12...Sh3 13.Kf5 lub 13.Kf6).1-0.
Studium szachowe, które skomponowałem dla silnych szachistów. [A]