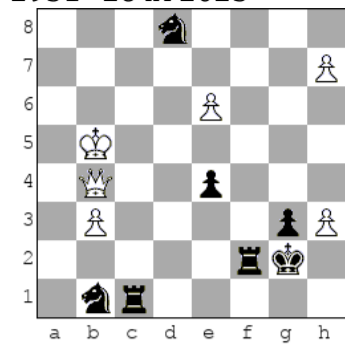


PALLIER Alain

2951 26 iX 2023



= (6+7)

FEN 3n4/7P/4P3/1K6/1Q2p3/1P4pP/5rk1/1nr5 w - - 0 1

W: Kb5,Qb4,b3,e6,h3,h7 - B : Kg2,Rc1,Rf2,Sb1,Sd8,e4,g3

1.h8Q!

1.e7? Sf7! 2.e8Q Sc3+ 3.Ka6 and, eg, 3...Kh1 4.Qd4 Rf3 5.h4 g2 6.h5 g1Q 7.Qxg1+ Kxg1 and Black wins ; 1.Qxe4+? Kh2 2.h8Q Sc3+ and Black wins.

1...Sc3+!

2.Qhxc3!

2.Qbxc3+? Rxc3 3.Qxd8 and, eg, 3...Rxb3+ 4.Kc4 Rbf3 5.e7 Kh1 6.e8Q g2 7.Qg8 e3 and Black wins.

2...Rxc3

3.e7!

3.Qxc3? Sxe6 and Black wins.

3...Rc8!

3...Rf5+ 4.Ka4 Sc6 and, eg 5.Qxe4+ Kh2 6.Qxf5 Sxe7 7.Qe5 Rf3 with a draw.

4.Qxe4+! Kh2

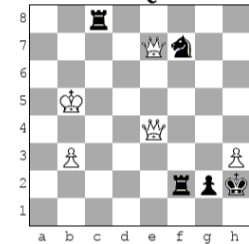
5.e8Q Sf7

6.Q8e7!

6.Qxc8? Sd6+ 7.Ka4 Sxe4 and Black wins.

6...g2

6...Re8 7.Qxe8 Sd6+ 8.Kany Sxe4 9.Qxe4 with a draw.



7.Q4b7!!

7.Qg4? and, eg, 7...Re8 8.Qc7+ Re5+ 9.Ka4 g1Q 10.Qxg1+ Kxg1 and Black wins as after 7.Qg6(b1)? and, eg, 7...g1Q 8.Qxg1 Kxg1 -+

7...Rd8!

7...Rf5+ 8.K(a)b4 g1Q 9.Qe2+ Rf2 10.Qxf2+ Qxf2 11.Qxc8 draw

7...Rg8 8.Qbc7+! Rg3 (8...Kh1 9.Qe4 Rc8 and, eg, 10.Qg3 Rg8 11.Qc7 drawing) 9.Qe1 Rf3 (9...Rf5+ 10.Ka4 Rf3 11.Qd1 g1Q 12.Qxf3 draw or 10...Se5 11.Qcc1 Rfg5 12.Qf2 Kxh3 13.Qcg1 R5g4+ 14.Ka3 Sc4+ 15.Ka2 Se5 16.Qf5 Sf3 17.Qh7+ draw) 10.Qd1 Sg5 (10...g1Q 11.Qxf3+ draw) 11.h4 Rf5+ and, eg, 12. Ka6 Rf6+ 13.Ka5 Sh3 14.h5 g1Q 15.Qxg1+ Sxg1 16.b4 Sf3 17.b5 and White draws.

8.Qxf7!

8.Qbc7+? Kh1 9.Qxf7 (9.Qg3 g1Q 10.Qxg1+ Kxg1 -+) 9...Rxf7 10.Qxc7 g1Q 11.Qb7 Qg2 12.Qxg2 Kxg2 13.b4 Kg(f)3 14.Kc6 Rc8+! 15.Kd6 Rb8 and Black wins.

8...Rxf7

9.Qxf7 Rb8+!

9...g1Q 10.Qc7+ =

10.Ka6! and White draws, eg 10...g1Q 11.Qc7+(f4+) Qg3 12.Qc2+(Qd2+) Kg1 13.Qd1+ Kf2 14.Qd2+ Kf3 15.Qd3+ Kf4 16.Qd6+ with perpetual check.

But not 10.Ka5? g1Q 11.Qc7+ Qg3 12.Qc2+ Kg1 13.Qd1+ Kg2 14.Qc2+ Qf2 15.Qg6+ Kh2 16.Qd6+ Qg3 17.Qd2+ Kxh3 18.Qh6+ Kg2 19.Qd2+ Kf1 20.Qd1+ Qe1+ with counter-check and Black wins, explaining why a5 is the wrong square for White king) or 15.Qc6+ Qf3 16.Qc2+ Kg3 17.Qg6+ Kf2 18.Qc2+ Qe2 19.Qf5+ Ke1 20.Qb1+ Kd2 21.Qb2+ Kd3 22.Qb1+ Kd4 23.Qg1+ Kd5 24.Qg5+ Qe5 and Black wins.

Note for the judge : this study is based on the fact that the ending Q vs RRN is normally lost for White, even if White has one or two pawns, if these pawns stand in the lower part of the board. Eg, after tries 7.Qg4? or 7.Qb1(g6)? *

Position after 7...Rg8 is an exception to this rule (White draws) because Black's play is too slow and White is able to mobilize quickly his pawns.

* Here are some supporting lines:

1) 7.Qg4? Rb8+ 8.Kc4 Re8 9.Qc7+ Re5+ 10.Kb5 g1Q 11.Qxg1+ Kxg1 12.b4 Rf7 13.Qc1+ Kg2 14.Qd2+ (14.Qh6 Rb8+ 15.Ka6 Rf3 -+) 14..Kxh3 and Black wins (Syzygy tables).

2) 7.Qb1(Qg6)? g1Q 8.Qxg1+ Kxg1 and now, eg:

- 9.h4 Rb8+ 10.Kc4 (10.Kc5 Rf5+ 11.Kd4 Rxb3 etc.) 10... Rf4+ 11.Kc3 Rf3+ 12.Kd4 Rxb3 13.Qe1+ Kg2 14.h5 Rf4+ 15.Kc5 Rf5+ 16.Kc4 Rbf3 17.Qe2+ Kg3 Black wins.

- 9.b4 Rf5+ 10.Ka4 Ra8+ 11.Kb3 Se5 12.b5 Rf3+ 13.Kb4 Sd3+ 14.Kb3 Sf4+ 15.Kb2 Rg8 Black wins.

- 9.Qe3 eg 9...Kg2 10.Qe4+ (10.h4? Rb8+ 11.Kc6 Rc2+ etc) 10...Sd6+ 11.Kb6 Rb8+ 12.Ka4 Ra8+ 13.Kb4 Sf5 14.Qc5 Rd8 15.Qc1+ Kh2 16.Qc7+ Rd6 17.h4 Kg3 18.h5 Kg4 19.Ka3 Kxh5 and Black wins (Syzygy tables).