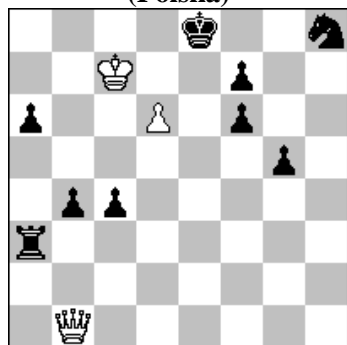


POLSKI ZWIĄZEK SZACHOWY 2023

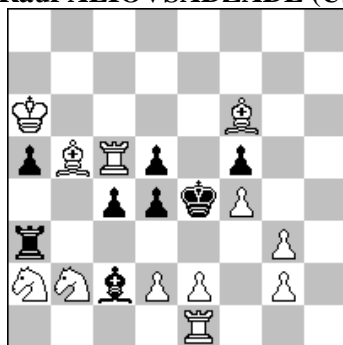
ORYGINAŁY 22 VIII 2023 [2928 –2933]

2928. Andrzej BABIARZ
(Polska)



#2 (3+9)

2929. Daniil YAKIMOVICH
& Rauf ALIOVSADZADE (USA)



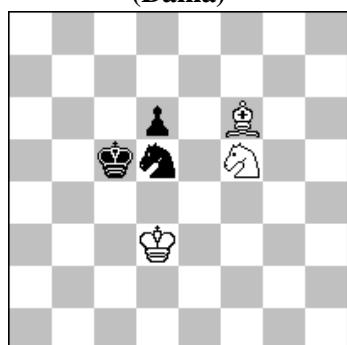
#2 (12+8)

2930. Sergiej TKACZENKO (Ukraina)
& Leonid LIUBASZEWSKIJ (Izrael)



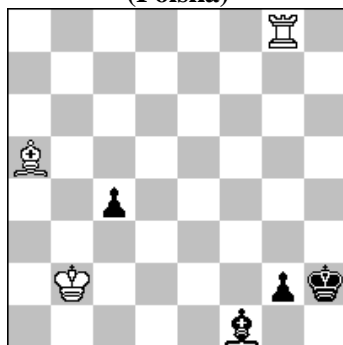
#3 (7+8)

2931. Niels DANSTRUP
(Dania)



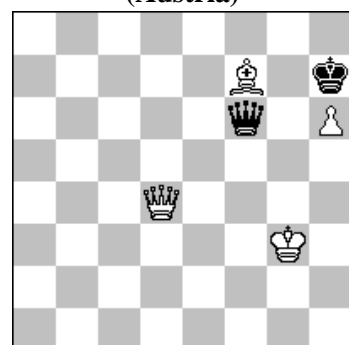
h#2 b) Sd5→d4 (3+3)

2932. Marian FRAK
(Polska)



h#2** 2 rozwiązania (3+4)

2933. Peter KRUG
(Austria)



+ (3+3)

- 2928 BABIARZ** 1.He4+? Kf8! 1.Hf5? ~ 2.Hc8 1.....Kf8! 1.H:b4? ~ 2.Hb8/d7 AB 1...Wd3 2.Hb8 A 1...Wb3 2.d7 B 1...Kf8! a 1.Hh7? ~ 2.H:h8/Hg8 CD 1...Kf8 2.H:h8 C 1...Wh3 2.Hg8 D 1...Sg6! b 1.Hh1! ~ 2.H:h8/Ha8 EF 1...Kf8 a 2.H:h8 E 1...Sg6 b 2.Ha8 F 1...Wf3 2.H:h8 E 1...Wh3 2.Wa8 F. Wybór wstępu. Rozdzielenie matów groźbowych w trzech fazach, w tym dwukrotne w rozwiązaniu. Meredith. [A]
- 2929 YAKIMOVICH & ALIOVSADZADE** 1.S:c4? ~ 2.Sd6# 1...d:c4 a 2.We5# A & Gc6# B 1...W:g3! 1.G:c4? ~ 2.G:d5# 1...d:c4 a 2.We5# A 1...Gb3 2.Gd3# 1...Gd3 2.e:d3# 1...W:g3! 1.W:c4! ~ 2.W:d4# 1...d:c4 a 2.Gc6# B 1...Wa4 2.Sc3# 1...Wd3 2.e:d3#. Combination of Makihovi and Yenakievo-Novoselitskaya themes. [A]
- 2930 TKACZENKO & LIUBASZEWSKIJ** 1.Gd1! ~ 2.Hb3+! W:b3 3.c:b3# 1...W:a7 2.H:c6+! W:c6 3.c4# 1...W:d3 2.He4+! Wd4 3.c3# 2...Sc4 3.H:c4 # 1...Sc4 2.H:c4+! W:c4 3.c2c3# 1...Sd5 2.He4+ Sd5b4 3.Sd3b2# 2... Wc4 3.c2c3# 1...H:a2 2.H:a2+. Models with pin, Queen sacrifice. [A]
- 2931 DANSTRUP** a) 1.Sb6 Sd4 2.d5 Be7# b) 1.Se6 Bd4+ 2.Kd5 Se7#. 2 Ideal mates. In 3 of the 4 half-moves, there are play on the exact same square and in the same sequence (d4,d5 and e7). There are exchange of functions (wSf5/wBf6). Place exchange in the final positions (white, Bishop and Knight). There are no similar moves. [A].
- 2932 FRAK** 1...Gb6 2.Kh1 Wh8# 1...Wh8+ 2.Kg1 Gb6# 1.Kg1 a tempo Gb6+ A 2.Kh1 b Wh8# B 1.Kh1 b tempo Wh8+ B 2.Kg1 a Gb6# A 1.Kg1 Wh8? 2.?? Gb6# 1.Kh1 Gb6? 2.?? Wh8#. Przetawienie ruchów białych i czarnych: aA bB - bB aA,zamiana funkcji białych figur oraz białe tempo rodzielające gry przygotowane. Dwa maty wzorowe. Miniatura.
- 2933 KRUG** 1.Gg8+! Kg6 2.He3! (Próba 2.Gh7+? Kh5!! remis) 2...Hd6+ 3.Kg2 Hf6 4.Kh3! Hf5+ 5.Kg3 Hf6 6.Kg2! teraz czarne są w zuzzwagu 6...Hf5 7.h7 Hg4+ 8.Kf1 Hf5+ 9.Ke1 Hb1+ 10.Kf2 Hb2+ 11.Kg3 Kg7 12.Gc4! K:h7 13.Gd3+ Kg7 14.He7+ Kg8 (14...Kh6 15.Hh7+) 15.Gc4+ Kh8 16.Hf8+ Kh7 17.Gd3# - znany mat. 1-0.