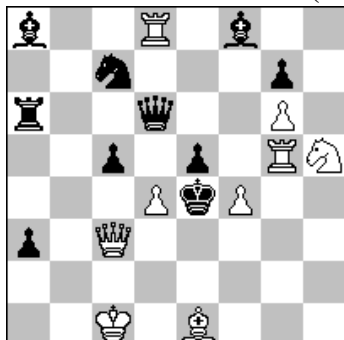


POLSKI ZWIĄZEK SZACHOWY 2022

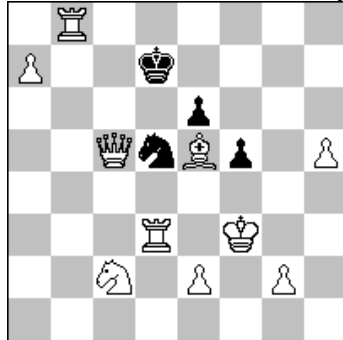
ORYGINALY 8 XI 2022 [2763 – 2768]

2763. Leonid MAKARONEZ (Izrael)
& Rauf ALIOVSADZADE (USA)



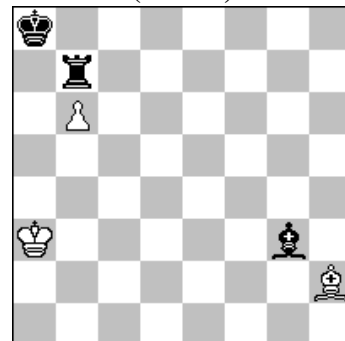
#3 (9+10)

2764. Jiří JELÍNEK
& Alexander FICA (Czechy)



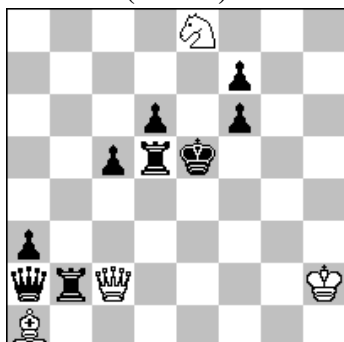
s#5 b) Kf3→a6 (10+4)

2765. Marian FRAK
(Polska)



h#2 2 rozwiązania (3+3)

2766. Stefan MILEWSKI
(Polska)



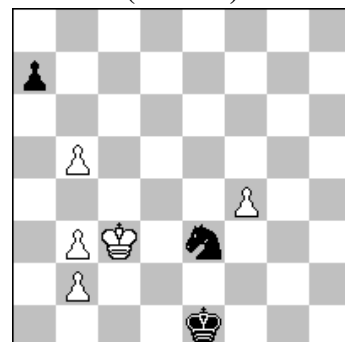
h#2 b) Se8→f8 (4+9)

2767. Zoltan LABAI (Słowacja)
& Miroslav SVITEK (Czechy)



h#2 4 rozwiązania (9+11)

2768. Peter KRUG
(Austria)



+ (5+3)

- 2763 MAKARONEZ & ALIOVSADZADE 1.d:c5! ~ 2.We5+ He5 3.Hd3# 1...Sd5 2.Hc4+ Ke3 3.Wg3# 1...Gd5 2.Sg3+ Kf4 3.Hd2# 1...Kd5 2.c:d6 ~ 3.We5# 1...Hd1+ 2.Wd1 Wd6 3.We5# 1...Hd2+ 2.Wd2 Gd6 3.Hd3# 1.Gd2? ~ 2.We5+ He5 3.Sg3# 1...e:f4 2.Sg3+ f:g3 3.He3# 1...Kd5!
- 2764 JELÍNEK & FICA a) 1.Wf8 f4 2.Gf6 e5 3.W:d5+ Ke6 4.Wd6+ Kf5 5.Hf2 e4# b) 1.a8W f4 2.Wb5 f3 3.Wa5 ~ 4.Ha7+ Kc6 5.Sb4+ S:b4#. Blocks of the wQ in the mating net and model mates. [A]
- 2765 FRAK 1.Gc7 b:c7 2.Wb8 c:b8H# 1.Wa7+ b:a7 2.Gb8 a:b8H#.
- 2766 MILEWSKI. a) 1.Kd4 S:d6 2.We5 Hd2# b) 1.f5 Se6 2.f6 He2#.. Dwa maty wzorowe ze związaniem czarnej wieży i białego hetmana. Zdwojenie tematu Pelle.
- 2767 LABAI & SVITEK 1.e3 h:g3 (b:c5?) 2.Se4 c5# 1.Ge2 b:c5 (h:g3?) 2.We3 d:e5# 1.Sb3 Ga4 2.K:c4 Gb5# 1.Ge3 W:e5 2.K:d4 Wd5#.
- 2768 KRUG 1.Kb4 Sd5+ 2.Ka5 Kd2 3.Ka6 Sc7+ 4.K:a7 S:b5+ 5.Kb6 Sd4 6.b4 Ke3 7.Kc5 Se6+ 8.Kd6 Sd4 9.Kd5 Kd3 10.b5! (10.b3? Kc3) 10...S:b5 11.f5 Sc7+ 12.Kc6! (12.Kd6? Se8+! 13.Ke7 Sc7 14.f6 Sd5+ 15.Ke6 S:f6 =) 12...Se8 13.b4 Kd4 14.b5 Ke5 15.b6 Sd6 16.Kc7 Sb5+ 17.Kd7 Sd6 18.f6 Kd5 19.Kc7 (lub19.Ke7) 19...Se8+ 20.Kd8 Sd6 21.Kd7 zugzwang lub Kc5 (21...Ke5 22.f7! [22.b7? S:b7 23.f7 Sc5+ 24.Ke7 Se6] 22...S:f7 23.b7) 22.b7! (22.f7? S:f7 23.b7 Se5+ 24.Kc7 Sc6 =) 22...S:b7 23.f7 +- 1-0..