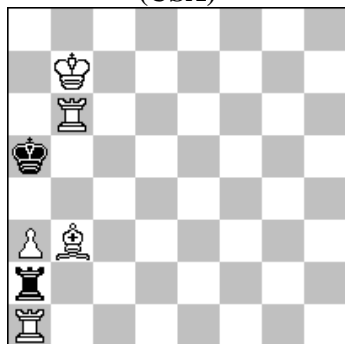


POLSKI ZWIĄZEK SZACHOWY 2022

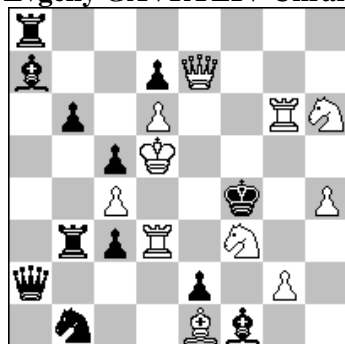
ORYGINAŁY 22 II 2022 [2599 – 2604]

2599. Rauf ALIOVSADZADE  
(USA)



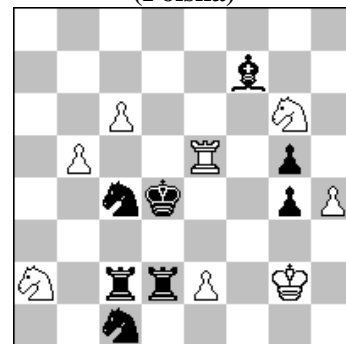
#2 (5+2)

2600. Aleksandr PANKRATIEW (Rosja)  
& Evgeny GAVRYLIV (Ukraina)



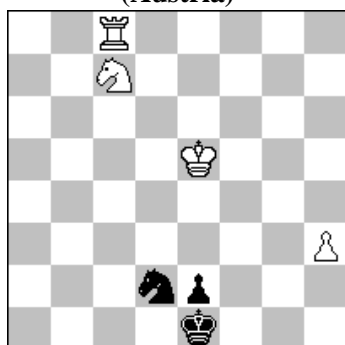
s#4 (11+12)

2601. Stefan MILEWSKI  
(Polska)



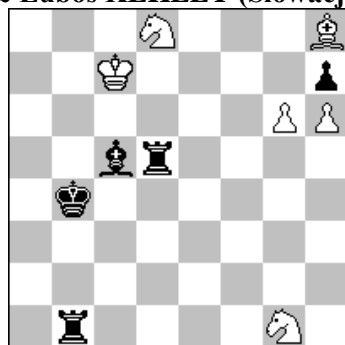
h#2 4 rozwiązania (8+8)

2602 Peter KRUG  
(Austria)



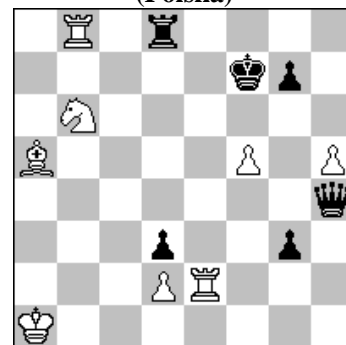
+ (4+3)

2603. Michal HLINKA  
& Luboš KEKELY (Słowacja)



= (6+5)

2604. Andrzej JASIK  
(Polska)



= (8+6)

- 2599 ALIOVSADZADE 1.Wc1? ~ 2.Wc5# 1...Wc2! 1.Gc4? ~ 2.Wa6# 1...W:a3 2.W:a3#1...Wb2! 1.a4! ~ 2.Wb5# 1...W:a4 2.W:a4#. Kozhakin theme in solution. [A]
- 2600 PANKRATIEW & GAVRYLIV . 1.Sd4? ~ 2.S:e2+ G:e2 3.Wf3+ G:f3+ 4.He4+ G:e4# 1...c2 2.Gd2+ S:d2 3.He4 S:e4 4.Wf6+ S:f6# 1...c:d4 2.Hf8+ W:f8 3.W:d4+ Ke3 4.Sf5+ W:f5# 1...Hd2! 1.Sg1! ~ 2.S:e2+ G:e2 3.Wf3+ G:f3+ 4.He4+ G:e4# 1...Hd2 2.Wd4+ c:d4 3.Hf6 Ke3 4.H:d4+ H:d4#.
- 2601 MILEWSKI 1.g:h4 S:h4 2.g3 Sf3# 1.Ge8 Se7 2.G:c6+ S:c6# 1.Wb2 Sc3 2.W:b5 S:b5# 1.Wd3 S:c1 2.W:e2+ S:e2#. Aktywne ofiary czarnych, temat bukowiński, cztery maty wzorowe.
- 2602 KRUG 1.We8! Kf2 2.Kf6 Sf3 3.Sb5 e1H 4.W:e1 K:e1 5.Sd4 Sh4 6.Kg5 Sg2 7.Kg4 Kd2 8.Kg3 Se3 9.Kf3 Kd3 10.Se6 Sc4 11.Kf4 Se3 12.Ke5 Sg2 13.Sf4+ S:f4 14.K:f4 1-0.
- 2603 HLINKA & KEKELY 1.g:h7 (1.Se2? Kc4 2.Sc3 Gb6+ 3.Kc6 W:d8 4.S:b1 W:h8 -+) 1...Kb5 (1...Kc4 2.Sf3! W:d8 3.K:d8 Wb8+ 4.Kd7 W:h8 5.Ke6 W:h7 6.Se5+ Kd4 7.Sf7 Gf8 8.Kf6 G:h6 9.Kg6 Wg7+ 10.Kf6 Wh7 11.Kg6 pozycyjny remis) 2.Gf6 Gb6+ 3.Kb8! (3.Kb7? Wd7+--; 3.Kc8? Wc1+ 4.Kb8 Gc7+ 5.Kb7 Gf4-+) 3...W:d8+ 4.G:d8 Gd4 (4...Kc6 5.G:b6 =) 5.Sf3 Kc6+ 6.Kc8 Gh8!; 6...Gc3 7.Gc7 =) 7.Gc7 Wf1 8.Ge5! W:f3 9.Gg7! (9.G:h8? Wf8#) 9...Wf7 (9...We3 10.Kd8 We6 11.G:h8 = switchback) 10.Kd8 Kd6 (10...Wa7 11.G:h8 switchback Wa8+ 12.Ke7 W:h8 13.Kf6 W:h7 14.Kg6 =) 11.Ke8 We7+ (11...Ke6 12.G:h8 = switchback) 12.Kf8 (12.Kd8? Wa7 13.Ke8 Ke6 14.Kd8 Kf7 15.G:h8 Wa8+--+) 12...Ke6 (12...Wa7 13.G:h8 = switchback) 13.G:h8 (13.Kg8? We8+ 14.Gf8 Kf6 zugzwang 15.K:h8 W:f8#) 1/2-1/2.
- 2604 JASIK 1.Wb7+ Kf8 2.We7! (2.Gb4+? H:b4 3.Sd7+ Kf7! 4.W:b4 d:e2 5.Se5+ Kf7 -+; 2.We1? g2 3.Gb4+ Kg8 4.b1 He4 -+) 2...H:e7! 3.Gb4! H:b4 4.Sd7+W:d7 5.W:b4 Wa7+ 6.Kb2! (Próba logiczna: 6.Kb1? Wb7!! 7.W:b7 g2 8.Wb8+ Kf7 9.Wb6+Kg8 10.f6 g1H - szach!) 6.Wb7!! 7.W:b7 g2 8.Wb8+ Kf7 9.Wb7+ Kg8 10.f6! (Próba logiczna: 10.h6? g:h6 11.f6 g1H 12.Wg7+ H:g7 13.f:g7 h5 -+) 10...g:f6 11.h6! g1H 12.Wg7+ H:g6 13.h:g7 - remis.