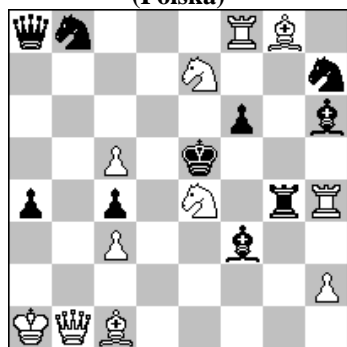


POLSKI ZWIĄZEK SZACHOWY 2021

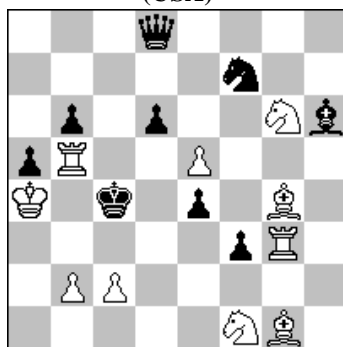
ORYGINAŁY 7 IX 2021 [2446 - 2451]

2446 Bogusz PILICZEWSKI
(Polska)



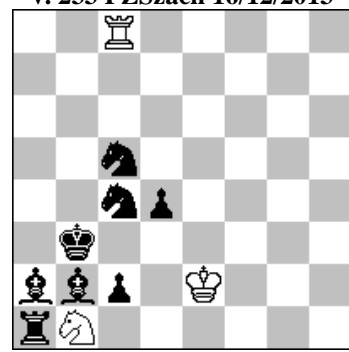
#2 (11+10)

2447. Rauf ALIOVSADZADE
(USA)



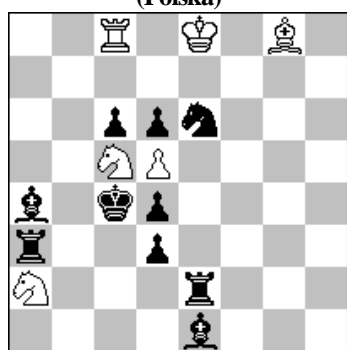
#3 (10+9)

2448. Waldemar TURA (Polska)
v. 233 PZSzach 16/12/2013



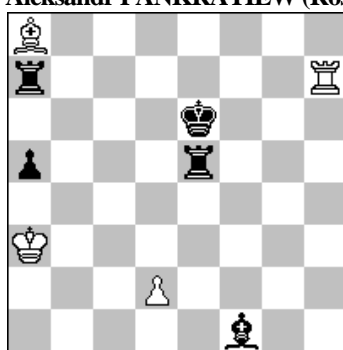
h#2 b) -Sc5 (3+8)

2449. Krzysztof DRAŻKOWSKI
(Polska)



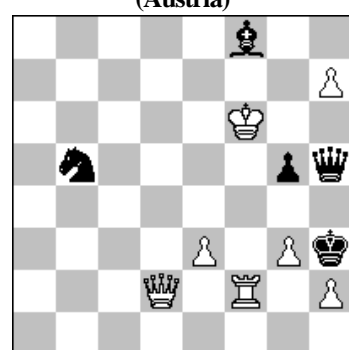
h#2 2 rozwiązania (6+10)

2450. Aleksiej IWUNIN
& Aleksandr PANKRATIEW (Rosja)



h#3 4 rozwiązania (4+5)

2451. Peter KRUG
(Austria)



+ (7+5)

- 2446 **PILICZEWSKI** 1.S:f6? ~ 2.Qf5# 1...Be4 a 2.S:g4# E 1...Qe4 c 2.Q:b8# C 1...Rf4 2.Sg6# 1...Rg5 2.Bf4# 1...Re4! b 1.Sf2? ~ 2.Qf5# 1...Be4 a 2.S:g4# E 1...Qe4 c 2.Q:b8# C 1...Rf4 2.Sg6# 1...Rg5 2.Bf4# 1...Re4! b 1.Sg5? ~ 2.Qf5#,Sg6# 1...Re4 b 2.S:f3# B 1...Qe4 c 2.Q:b8# C 1...S:f8 2.Qf5# 1...R:g5 2.Bf4# 1...Be4! a 1.Sg3? ~ 2.Qf5# 1...Re4 b 2.Sg6# D 1...Qe4 c 2.Q:b8# C 1...Rf4 2.Sg6# 1...Rg5 2.Bf4# 1...Be4! a 1.Sd6? ~ 2.Qf5# 1...Be4 a 2.S:c4# A 1...Re4 b 2.Sg6# D 1...Rf4 2.Sg6# 1...Rg5 2.S:c4,Bf4# 1...Qe4! c 1.Sd2! ~ 2.Qf5# 1...Be4 a 2.S:c4# A 1...Re4 b 2.S:f3# B 1...Qe4 c 2.Q:b8# C 1...Kf4 2.S:c4# 1...Rf4 2.Sg6# 1...Rg5 2.S:c4# Defences on same square, refutations on same square, option, black correction, Bartolovic, Grimshaw, changed mates, Umnov move, fliht giving key, Anderssen, Makihovi. [Autor].
- 2447 **ALIOVSADZADE** 1.Gh3! ~ 2.Sd2+ G:d2 3.Gf1# 1...e3 2.Wg4+ Gf4 3.W:f4# 1...Ge3 2.S:e3+ Kd4 3.Wd5# 2 obrony na tym samym polu 1...d:e5 2.Ge6+ Qd5 3.G:d5# 1...S:e5 2.Ge6+ d5 3.S:e5# ponownie 2 obrony na tym samym polu plus temat Lincolna. Dodatkowo: 1...f2 2.b3+ Kd4 3.c3# 1...Hg5 2.Ge6+ d5 3.G:d5#.
- 2448 **TURA** a) 1.Sa4 Wc5 2.Gc1 tempo (Ga3,c3?) ?) Wb5# b) 1.Sa3 Wc4 2.c1W tempo (c1H,G?) Sd2#. Umnow, tempo na jednym polu, jednolita motywacja unkania duali. Bardziej ekonomiczna i harmonijna wersja . dawnego zadania.
- 2449 **DRAŻKOWSKI** 1.Gb3 Gh7 2.c:d5 G:d3# 1.Wd2 Wb8 2.S:c5 Wb4#.
- 2450 **IWUNIN & PANKRATIEW** #1.We4 Kb3 2.Ke5 Wh5+ 3.Kd4 Wd5# 1.Gc4 Wb7 2.Kd5 d4 3.We6 Wd7# 1.Kd6 Ka4 2.Kc5 Wc7+ 3.Kb6 Wc6# 1.We7 Gd5+ 2.Kd7 Ge6+ 3.Ke8 Wh8#. HOTF.
- 2451 **KRUG** 1.Hd7+ g4 2.H:g4+ (2.H:b5? Gg7+ =) 2...K:g4 3.Wf4+ Kh3 4.Wh4+H:h4+ 5.g:h4 Ga3 6.e4 Gb2+ 7.e5 Sd6 8.h8H G:e5+ 9.K:e5 Sf7+ 10.Kf6 S:h8 11.h5 Kg4 12.h6 Kh5 13.Kg7 Kg5 14.h7 Sg6 15.h3! Kh5 16.h4 +- 1-0