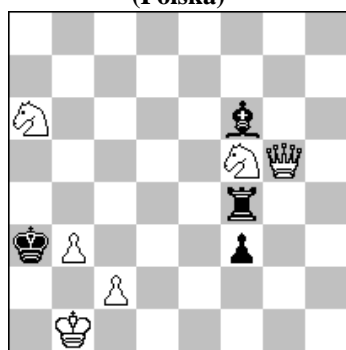


POLSKI ZWIĄZEK SZACHOWY 2021

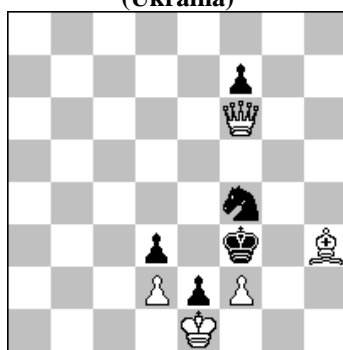
ORYGINAŁY 13 VII 2021 [2398 - 2403]

2398. Marian FRAK
(Polska)



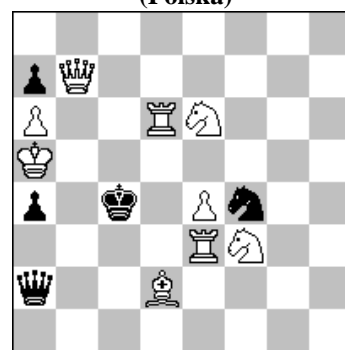
#2 (6+4)

2399. Gennadij KOZIURA
(Ukraina)



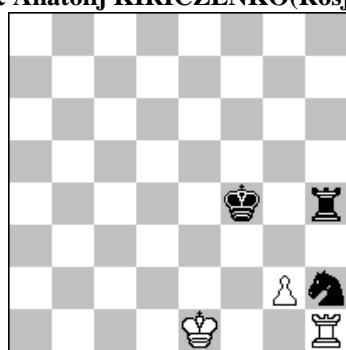
s#2 (5+5)

2400. Waldemar TURA
(Polska)



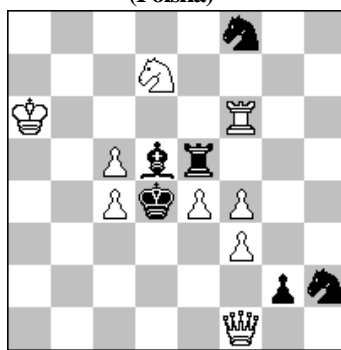
s#3 (9+5)

2401. Aleksandr PANKRATIEW
& Anatolij KIRICZENKO (Rosja)



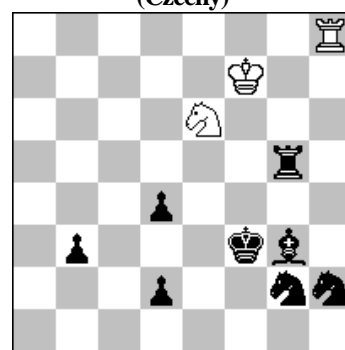
h#2 b) Pg2→f2 (3+3)

2402. Stefan MILEWSKI
(Polska)



h#2 4 rozwiązania (9+6)

2403. Alexander FICA
(Czechy)



h#2,5 5 rozwiązań (3+8)

- 2398 **FRAK** 1.H:f6? Wd4! 1.H:d4? Gd4! 1.Sd6? Wb4! 1.Sd4! ~2.Sb5/Ha5/Hc5# 1...G:d4/W:d4 2. Ha5/Hc5#.
- 2399 **KOZIURA** 1...Ke4 2.Gg2+ S:g2# 1.Hf5! f6 2.H:d3+ S:d3#.
- 2400 **TURA** 1.Gc1! ~ 2.Sd2+ H:d2+ 3.Hb4+ H:b4# 1...Ha1 2.Se5+ H:e5+ 3.Hb5+ H:b5# [2.Hb3+? a`b3+ 3.Ga3?] ...Sd3,d5 2.Hb4+ S:b4 3.Wc6+ S:c6# 1...S:e6 2.Wd4+ S:d4 3.Hc6+ S:c6# 2...Kc5 3.Hb6+ a:b6#. Ekonomicznie skonstruowany Adabaszew 2 x 2. Pierwsza para: sciaganie czarnego hetmana na linie matowania i proste echo diagonalno - ortogonalne; 3. i 4. wariant - wymuszenie mata 3...Sc6# z zamianą funkcji Hb7 i Wd6. Biały gонец d2 nie tylko wykonuje wstępne posunięcie, ale po 1...Ha1 zapobiega dualowi 2.Hb3+.
- 2401 **PANKRATIEW & KIRICZENKO** a) 1.Sg4 0-0+ 2.Kg3 Wf3# b) 1.Kg4 Wg1+ 2.Kh3 Wg3#. BK moves only, castling (white, short), play on the same square (B1, 2; W1,2), epaulette mate. [wg HA]
- 2302 **MILEWSKI** 1.S:f3 S:e5 2.K:e4 Hd3# 1.Ke3 He1+ 2.Kf3 S:e5# 1.W:e4 c:d5 2.K:d5 W-d6# 1.S:d7 f:e5 2.K:e5 Ha1#. Active sacrifice (white) × 2, bK moves only, compass theme (South, 2-2, 3), exchange of functions (bSh2/bSf8, active piece/passive; wPc4/wPf4, active sacrifice/passive; wQf1/wRf6, mate/passive guard; wQf1/wRf6, passive guard/Mate; wQf1/wSd7, mate/guard), Kniest theme × 2, play on the same square (W1, 2). [wg HA]
- 2403 **FICA** 1...Wa8 2.Ke2 S:d4+ 3.Kd1 Wa1# 1...W:h2 2.Sf4 We2 3.Wg4 S:d4# 1...Wh4 2.d1=S We4 3.Sf2 S:g5# 1...Wd8 2.Kg4 W:d4+ 3.Kh3 S:g5# 1...Sf8 2.Kg4 Sh7 3.Kh5 Sf6#. Bi-valve (bS-wR-bR), Chumakov theme (s-r-r, simplified cyclic, 3, 3), double-check battery model. [wg HA]