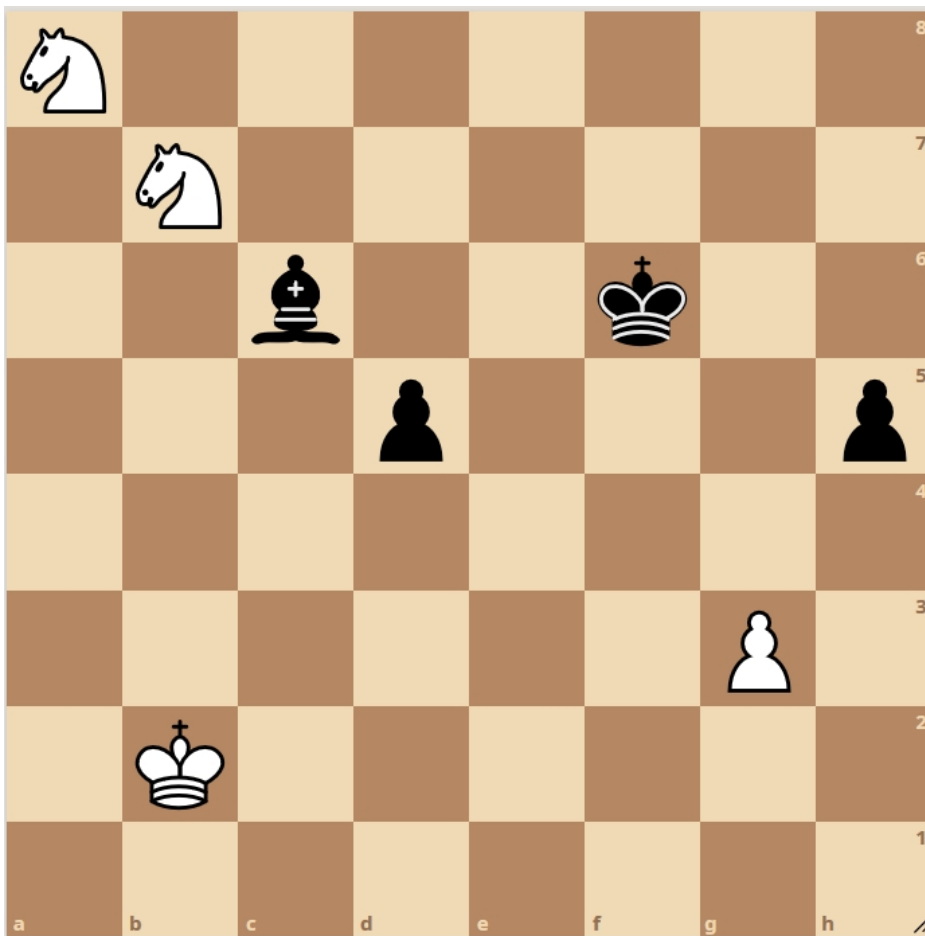


2253. Marek HALSKI



DRAW

(4+4)

FEN "N7/1N6/2b2k2/3p3p/8/6P1/1K6/8 w - - 0 1"

{White have to lose one of their knights, but which one?}

1. Nc5!

(({Try_1:} 1. Nd6 ? Bxa8 2. Ne8+ ! Kg6 !

{only delays:} 2... Kf7 3. Nd6+ Ke6 4. Ne8 Kf7 5. Nd6+ Kf6 6. Ne8+ Kg6 {repetition})

3. Nc7 Kf5 4. Ne8 d4 !

{again only delays:} 4... Kg6 5. Nc7 Kf5 6. Ne8 {repetition})

5. Ng7+ Kg5 !

{but not:} 5... Kg4 ? 6. Kc2 Be4+ 7. Kd2 Bg6 8. Ke2 ! Kxg3 9. Nxh5+ ! Bxh5+ 10. Kd3 =)

6. Kc2

{or} 6. Ne6+ Kg4 7. Nxd4 Kxg3 {Black win})

6... Be4+ 7. Kd2 Bf5 ! 8. Ke2 Kg6 !

{but not:} 8... Kg4 9. Kf2 Bd7 10. Ke2 =)

9. Ne8 Kf7 !

{only delays:} 9... Kg5 10. Ng7 Kg6 11. Ne8 {repetition})

10. Nd6+

{if} 10. Nc7 {then} 10... Kf6 ! 11. Kf3 Ke5 -+)

10... Ke6 11. Nc4 Kd5 12. Nd2

(12. Nb2 Ke4 13. Nd3 Bg4+ ! 14. Kd2 Kf3 {Black win})

12... Kc5 13. Nf1 Kc4 14. Kd2 Bd3 15. Nh2 Be4 ! 16. g4 h4 17. g5 h3 18. Ng4 d3 19. Nh2

(19. Nf2 h2 -+)

19... Kd4 20. Nf1 Bg6 21. Nh2 Ke4 22. Nf1 Kf3 23. Nh2+ Kg2 {Black win}

({Try_2:} 1. Nc7 ? Bxb7 2. Ne8+ Kg6 ! 3. Nc7

{or} 3. Kc3 Bc6 4. Nc7 Kf5 5. Kd4 Kg4 6. Kc5 Kxg3 7. Kxc6 h4 8. Nxd5 Kf3 9. Nc3 h3 {Black win})

3... Kf5 4. Ne8 d4 ! 5. Ng7+ Kg5 ! 6. Kc2 Be4+ ! 7. Kd2 Bf5 ! 8. Ke2 Kg6 ! {etc as in Try_1 - Black win})

({After:} 1. Na5 ? Bxa8 2. Nb3 Kg5 3. Nd4 Kg4 ! 4. Ne2 Kf3 {Black win})

({After:} 1. Nd8 ? Bxa8 2. Kc3 Ke7 {Black win})

({After:} 1. Nb6 ? Bxb7 2. Nd7+ Kf5 3. Nc5 Kg4 4. Nxb7 Kxg3 5. Nc5 h4 {Black win})

1... Bxa8

({Accepting one of White knights is necessary if Black want to win:} 1... Kf5 2. Nc7 Kg4 3. N7e6 Kxg3 4. Nd4 =)

2. Nd3 Kf5 3. Nf2

{denying Black king access to e4 & g4}

3... Ke5 4. Kc3 !

({but not} 4. Kc2? Kd4! 5. Kd2 Bb7 6. g4 h4! 7. g5 Ke5! 8. Ng4+ Kf5 {Black win})

4... Bc6 5. Kd3 Bd7 !

({If} 5... Bb5+ {then} 6. Ke3 ! Bf1 ! 7. Kd2 {etc as in the main solution})

6. Ke3 !

({But not} 6. Kc3 ? Bf5 7. Kd2 Kd4 ! 8. Nd1 Bd7 9. Nc3 Bc6 10. Nd1 Ke4 {thr. 11... Kf3} 11. Ke2 Bb5+ 12. Kf2 d4 -+)

6... Bf5 !

({or} 6... Bb5 7. Nh3 ! d4+ 8. Kd2 ! Ke4 9. Ng5+ ! Kf5 10. Nf3 ! Ke4 11. Ng5+ {pos. draw})

7. Nh1 !!

({But not} 7. Nd1 ? d4+ ! {here this move is effective because White king cannot go to e2/f3 squares due to Bg4+} 8. Kf2 Ke4 9. Nb2 Bg4 10. Nc4 Kd3 {and Black win})

({Bad is also:} 7. Kd2 ? {due to} 7... Kd4 ! 8. Nd1 Bd7 9. Nc3 Bc6 10. Ne2+ Ke4 11. Ng1 Bb5 -+)

7... Bh3

({or} 7... d4+ 8. Ke2 ! Bg4+ 9. Kd3 Bf5+ (9... Bf3 10. Nf2 ! =) 10. Ke2 d3+ 11. Ke3 Kd5 12. Nf2 Kc4 13. Kf4 Bg4 14. Ke3 {and Black cannot improve their position - draw})

({if} 7... Be4 {then} 8. Nf2 Bf5 9. Nh1 {with repetition})

8. Nf2 !

({But not:} 8. Kd3 ? Bf1+ ! 9. Ke3 d4+ ! 10. Kf3 Bc4 11. Nf2 Bb5 12. Nd1 Bd7 13. Nb2 Bg4+ 14. Kf2 Ke4 -+)

8... Bf1

({or} 8... Bf5 9. Nh1 {with repetition}) (8... Bd7/Bg2 9. Nd3+ =)

9. Kd2 !

({other moves lose due to 9...d4, for example:} 9. Kf3 ? d4 ! 10. g4 h4 ! 11. g5 Kf5 12. g6 Kxg6 13. Ke4 d3 14. Kf4 h3 15. Ke3 h2 16. Kd2 Kg5 17. Ke3 Kh4 18. Kd2 Kg3 19. Ke3 Kg2 -+)

9... Bc4 10. Ke3 ! Bf1

({after} 10... Ba6 {White have to be careful and play} 11. Nh3 ! ({and not} 11. Kd2 ? Kd4 ! 12. g4 h4 13. g5 Ke5! {and Black win})

11... d4+ 12. Kd2 Ke4 13. Ng5+ (13. Nf2 ? Kf3 -+) 12... Kf5 14. Nf3 ! Kg4 15. Nxd4 Kxg3 16. Ke3 ! Bc8 17. Ne2+ {draw})

11. Kd2 Kd4 !

{as other measures did not bring success Black try the last option!}

12. g4 !

({White have to be on the watch; this is the only moment they can defend actively with this move; disastrous would be passive:})

12. Ke1? {as after} 12... Ba6 13. Kd2 Bc4 {Black passes the duty of move on White, and now, with their bishop placed better, they win:}

14. g4 (14. Ke1 Ke3 15. Nd1+ Kf3 -+) 14... h4 ! 15. g5 Ke5 16. Ng4+ Kf5 17. Ne3+ Kxg5 -+)

12... h4 13. g5 Ke5 14. Ng4+ Kf4 15. Ne3 !

({Now White exploit bad placement of Black bishop on f1; other moves are losing, e.g:} 14. g6 ? d4 ! 15. g7 Bc4 16. Nf2 Kf5/Kg5 17. Nh3 Kf6/Kg6 ({but not:} 17... Kg4? 18. Ng1 ! Kg3 (18... h3 19. Nxb3 =) 19. Ne2+ Kf2 20. Nf4 Kg3 21. Ne2+ Kf2 22. Nf4 =) 18. Ng1 Kxg7 19. Ne2 h3 -+)

15... Bh3 ! 16. Nxd5+

({but not} 16. g6? d4 ({or} 16...Be6 17.Ke2 h3! -+) 17. Nd5+ Kg5 18. Ne7 Kh6 19. Kd3 Bg4 {Black win})

16... Kf3 !

({after} 16... Kxg5 17. Ke2 Be6 18. Ne3 h3 19. Kf2 {the draw is obvious})

17. Nc3 Bf1

({to counteract White move 18.Ne2; if} 17... Bf5 {then} 18. Ne2 =)

18. g6 h3

({If} 18... Bc4 {then} 19. Ne2 ! ({but not} 19. g7 ? h3 ! -+) 19... Bxe2 (19... h3 20. Ng1+ =) 20. Kc3 ! =)

19. Ne2 !!

{The heroic fight of White knight against Black bishop ends up in self-sacrifice with the aim of emptying c3 square for the king}

({Wrong would be:} 19. Nd5 ? Bc4 ! 20. Ne3 h2 {etc Black win})

({Wrong would be:} 19. g7 ? Bc4 ! {etc Black win})

19... Bxe2 20. Kc3 ! h2 21. g7 h1=Q 22. g8=Q

{draw}

1/2-1/2