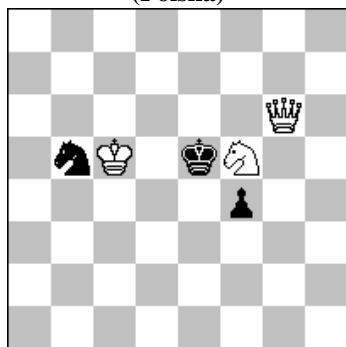


POLSKI ZWIĄZEK SZACHOWY 2020

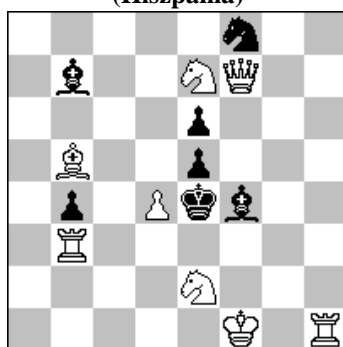
ORYGINAŁY 10 XI 2020 [2224 - 2229]

2224. Bogusz PILICZEWSKI  
(Polska)



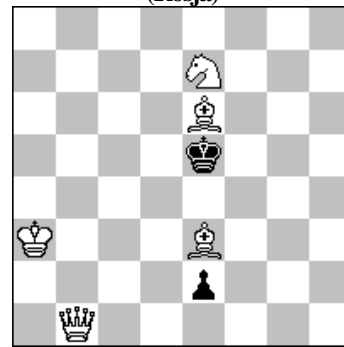
#2 (3+3)

2225. Miguel URIS  
(Hiszpania)



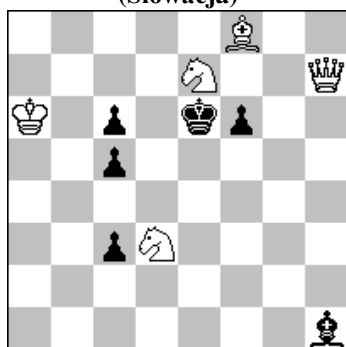
#2 (8+7)

2226. Władimir KOŹAKIN  
(Rosja)



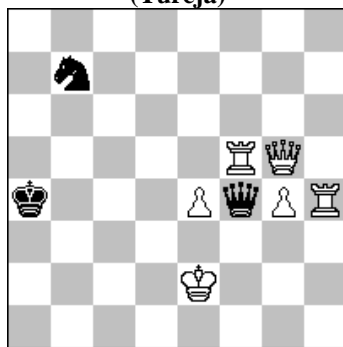
#3 (5+2)

2227. Zoltan LABAI  
(Słowacja)



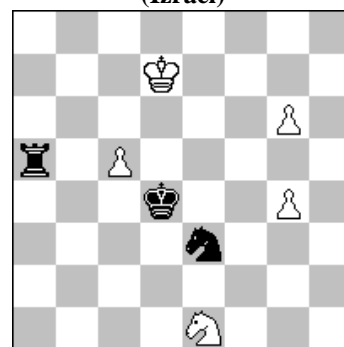
#3 (5+6)

2228. Kivanç ÇEFLE  
(Turcja)



h#2 2 rozwiązania (6+3)

2229. Michael PASMAN  
(Izrael)



= (5+3)

- 2224 **PILICZEWSKI** 1.Sd4? ~ 2.He6, Hf5, Sc6, Sf3# 1...Sd6 2.He6, Sc6, Sf3# 1...f3 2.Hf5# 1...S:d4! 1.Sg7? ~ 2.He6, Hf5# 1...Sd6 2.He6# 1...Sc7 2.Hf5# 1...f3 2.Hf5# 1...Sd4! 1.Se7? ~ 2.Sc6, Hf5# 1...Sd6 2.Sc6# 1...Sa7 2.Hf5# 1...f3 2.Hf5# 1...Sd4! 1.Sh4? ~ 2.Hf5, Sf3# 1...Sd6 2.Sf3# 1...f3 2.Hf5# 1...Sd4! 1.Sd6? ~ 2.Sf7, Sc4, Hf5# 1...Sd4 2.Sf7/Sc4# 1...f3 2.Hf5# 1...S:d6! 1.Sg3? ~ 2.Hf5# 1...Sd6 2.H:d6# 1...Sd4 2.Hd6# 1...f:g3! 1.Se3? ~ 2.Hf5, Sc4, Sg4# 1...Sd6 2.Sg4# 1...Sd4 2.Sc4/Sg4# 1...f3 2.Hf5# 1...f:e3! 1.Sh6! ~ 2.Hf5, Sf7, Sg4# 1...Sd6 2.Sg4# 1...Sd4 2.Sf7/Sg4# 1...f First ever White Knight's wheel using only 6 pieces (record) - Changed mates - Cycle of double mates - Ellermann-Makihovi - Option key – Rudenko. [Autor]
- 2225 **URIS** 1.Hg7? ~ 2.Hg2# 1...e:d4 c 2.H:d4# C 1...Sg6 2.H:g6# 1...Gg5 2.H:e5# 1...Gg3! b 1.Kf2? ~ 2.Gd3# B 1...Ge3+ a 2.R:e3# E 1...Gg3+! b 1.Hh5? ~ 2.Hf3# A 1...Ge3 a 2.Bd3# B 1...e:d4! c 1.Rbh3? ~ 2.Gd3# B 1...Ge3 a 2.Hf3# A 1...Gg3! b 1.Rhh3! ~ 2.Gd3# B 1...Gg3 b 2.Hf3# A 1...e:d4 c 2.H:f4# D 1...Ga6 2.Gc6#. Le Grand – Pseudo Le Grand – Kharkov 2 – Changed mates – Transferred mate. [Autor]
- 2226 **KOŹAKIN** 1...Kd6 2.Gc5+! K:c5 3.Hb4# 2...Kc7 3.Hb6#, 2...K:e6 3.Hf5#, 2...Ke5 3.Hf5# 1.Sg6+? 1...Kf6 2.Hf5+ Kg7 3.Hf7# 1...K:e6! 1.Gc8? Kf6! 1.Gc5! ~ 2.Hf5# 1...Kf4 2.Hf5+ Kg3 3.Hf2# 1...Kf6 2.Hg6+ Ke5 3.Hf5#.
- 2227 **LABAI** 1...f5 2.H:f5+ Kd6 3.Sd5# 1...Kd7 2.S:c6+ Kc8Ke8/Ke6/Kc5 3.Hb7/He7/Sf4/Hb7# - gwiazda czarnego króla; 1.Sf5! ~ 2.Se3 ~ 3.He7# 1...Kd5 2Se3+ Kd4 3.Gc5# 1...Gd5 2.S:c5+ Ke5 3.Gd6# 1...Ge4 2.Sf4+ Ke5 3.Gd6# - maty wzorowe. [Autor]
- 2228 **ÇEFLE** 1.H:e4+ He3 2.H:g4+ W:g4# 1.H:g4+ Wf3 2.H:e4+ W:e4#.
- 2229 **PASMAN** 1.Sc2+!! (1.Sf3+ K:c5; 1.c6 Wa7+! 2.c7 [2.Kd6 Sc4+ 3.Ke6 Ke4 4.Sc2 Wc7 5.Sb4 Se5 6.Kd6 Wg7 7.c7 Wd7+] 2...Sd5 3.Sf3+ Kc5 4.Se5 W:c7+; 1.Kd6 Sc4+) 1...S:c2 2.c6 Se3 (2...Sb4 3.c7) 3.c7! (3.g7 Wg5 +-) 3...Sd5! (Poboczna gra: 3...Sc4!? 4.g7 Wg5 5.Ke6!! We5+ 6.Kd7!! Wg5 7.Ke6 We5+ 8.Kd7 Sb6+ 9.Kc6! We6+ 10.Kb7,b5 Wg6 11.g8H! W:g8 12.K:b6 =) 4.g7! (4.c8H Sb6+) 4...Wa8! 5.c8S! (Pheniks t. - ofiarowany skoczek odradza się. Blokowanie pola c8; 5.c8H Sb6+ 6.Ke6 W:c8 7.Kf7 Wc7+ 8.Kf8 Sd7+ +-) 5...Sf6+ 6.Ke6! Sg8 7.Sd6! (7.Se7 Wa6+ 8.Kf7 Sh6+ 9.Ke8 Ke5) 7...Ke3 8.Kf7 Kf4 (8...Sh6+ np. 9.Kg6 S:g4 10.Kg5 Se5 11.Sf5+ Ke4 12.Se7) 9.Se8! - przeniesienie blokowania z c8 na e8 - 9...Sh6+ 10.Kg6 W:e8 (10...Wa6+, np. 11.Sf6 Sg8 12.g5 Se7+ 13.Kf7) 11.K:h6 1/2-1/2.