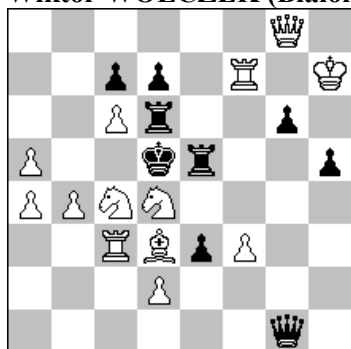


POLSKI ZWIĄZEK SZACHOWY 2019

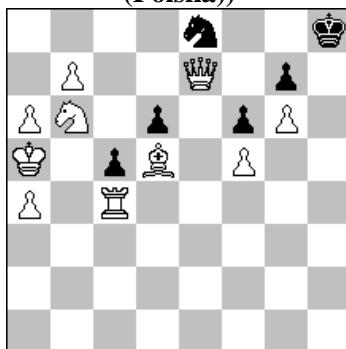
ORYGINAŁY 5 XI 2019 [1917-1922]

1917. Leonid MAKARONEZ (Izrael & Wiktor WÓLCZEK (Białoruś)



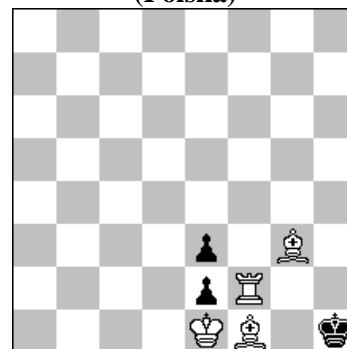
#3 (13+9)

1918. Marian FRAK (Polska)



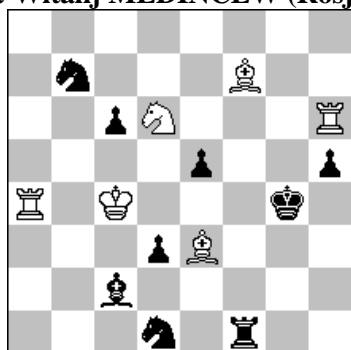
s#6 (10+6)

1919. Marian FRAK (Polska)



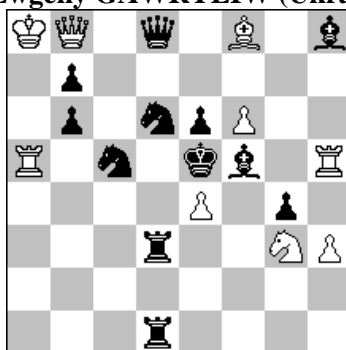
h#2 2 rozwiązania (4+3)

1920. Iwan ANTIPIN & Witalij MEDINCEW (Rosja)



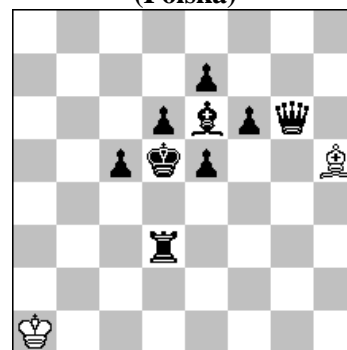
h#2 2 rozwiązania (6+9)

1921. Aleksandr PANKRATIEW (Rosja) & Ewgeny GAWRYLIW (Ukraina)



h#2 b) Gf8→g7 (9+12)

1922. Stefan MILEWSKI (Polska)



h#3 3 rozwiązania (2+9)

1917. MAKARONEZ & WÓLCZEK 1...K:d4 2.Wf4+ We4 3.We4# 1.Sc2! ~ 2.Wf5+ We6 3.Ge4# 2...Kc6 3.Ha8# 1...Hg4 2.Se3+ Ke6 3.He8# 2...We3 3.Wf5# 1...Ke6 2.Wf8+ Ke7 3.Hf7# 1...We8 2.Wf6+ Kc6 3.Sd6# 1...We7 2.We7+ We6 3.Ge4# 1...Wee6 2.Wf4 ~ 3.Ge4# 1...Wf6 2.Wf6+ We6 3.Ge4# 1...Wde6 2.Sb6+ Kd6 3.Wd7# 1.Sb3? 1.Se2? Wee6!

1918. FRAK 1.Wc1? Sc7 2.Hd8+ Se8 3.a7 c4 4.Ka6 c3 5.a5 c2 6.Hc7 S:c7# 1...c4! 1.a7! Sc7 2.Hd8+ Se8 3.Wc1 c4 4.Ka6 c3 A5.a5 c2 6.Hc7 S:c7#. Dobra złuda i tempowa ofiara hetmana.

1919. FRAK 1.e:f1W+ Ke2 2.Wg1 Wh2# 1.e:f2+ K:f2 2.e2W Gg2#. Zilahi, promocje w W i maty wzorowe w miniaturze.

1920. ANTIPIN & MEDINCEW 1.S:e3+ Kc3+ 2.Kg5 Wg6# 1.S:d6+ Kc5+ 2.Kf5 Ge6#.

1921. PANKRATIEW & GAWRYLIW a) 1.H:f6 H:b7 2.S:e4 H:e4# b) 1.Wd5 Wa4 2.S:e4 W:e4#. Active sacrifice (black) × 3. Bukovina (reverse form) theme. Cycle of double pins. Play on the same square (B2, 3). Play on the same square (W2, 3). Pin-mate × 3. Mates on the same square × 3. [Autorzy]

1922. MILEWSKI 1.Wd4 Ge2 2.Hc2 Ga6 3.Hc4 Gb7# 1.Gf7 Gf3+ 2.Ke6 Gb7 3.Wd5 Gc8# 1.Hf5 Gg6 2.Gd7 Gh7 3.Ke6 Gg8#.