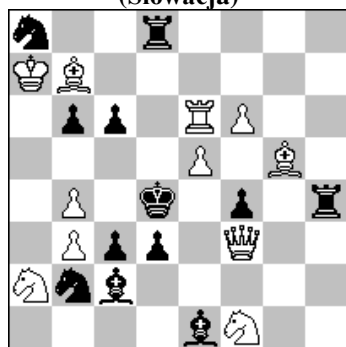


POLSKI ZWIĄZEK SZACHOWY 2019

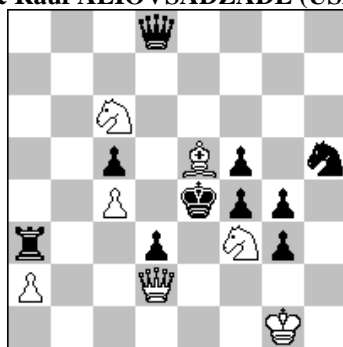
ORYGINAŁY 26 XI 2019 [1935-1940]

1935. Zoltan LABAI
(Słowacja)



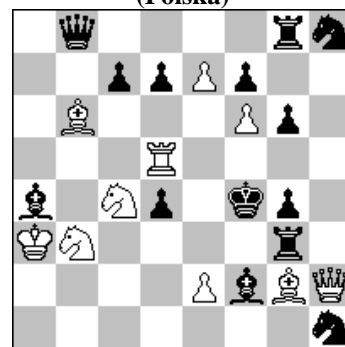
#2 (11+12)

1936. Leonid MAKARONEZ (Izrael)
& Rauf ALIOVSADZADE (USA)



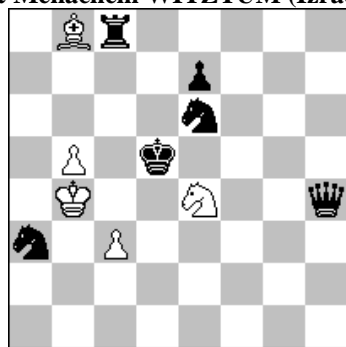
#3 (7+10)

1937. Stefan MILEWSKI
(Polska)



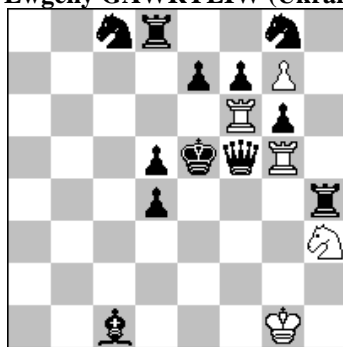
#3 (10+14)

1938. Emanuel NAVON
& Menachem WITZTUM (Izrael)



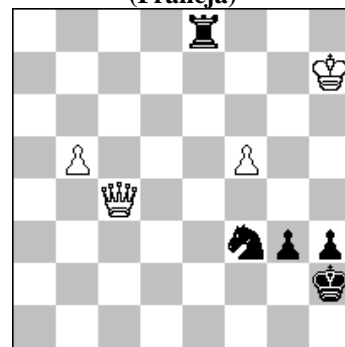
h#2 2 rozwiązania (5+6)

1939. Aleksandr PANKRATIEV (Rosja)
& Ewgeny GAWRYLIW (Ukraina)



h#2 4 rozwiązania (5+12)

1940. Alain PALLIER
(Francja)



= (4+5)

1935. LABAI 1.Sg3 ~ 2.Sf5#,He4# 1...d2 2.Se2# 1...f:g3 2.Ge3#1...G:g3! 1.Se3 ~ 2.Sf5# 1...d2 2.S:c2# 1...f:e3 2.G:e3# 1...G:b3! 1.H:c6 ~ 2.He4# 1...d2 2.H:c3# 1...f3 2.Ge3# 1...Wd5 2.H:d5#. Temt Czepiznego. [Autor]
- 1936 MAKARONEZ & ALIOVSADZADE 1.Gb2! - 2.He1+ A K:f3 3.Se5# B 1...K:f3 2.Se5+ B Ke4 3.He1# A 1...Hf6,e7 2.Sce5 ~ 3.He1# A 2...H:e5 3.Sg5# D 1...Hd4+ 2.G:d4 ~ 3.Sg5# D 2...g:f3 3.He1 A 2...K:f3 3.Hg2#. Adabashev system: First pair of variations (threat=thematic variation) -white AB-BA; Second pair of variations Pseudo Le Grand.[Autorzy].
- 1937 MILEWSKI 1.e4! ~ 2.Hh6+ g5 3.Wf5# 1...d:e3 ep. 2.Sc1 ~3.Se2#/3.Sd3# (2.Sb2? Gb5! 2.Sc5? Gc2!) 2...e2+,Gd1/Gc2 3.Sd3/Se2# 1...Hf8 2.G:c7+ d6 3.G:d6#.
- 1938 NAVON & WITZTUM 1.Sg5 Gf4 2.e6 Sf6# 1.Sd4 (Sf4?) Sc5 (Sg5?) 2.Sb1 c4# The black The Queen is move from a square, and black/white – close/guard this square, with Blacks/whites indirect unpinning+ Blacks/whites interference on different lines [Autorzy]
- 1939 PANKRATIEV & GAWRYLIW 1.Ke4 Wg3 2.He5 Sf2# 1.We4 Sf2 2.Gf4 Sg4# 1.Sd6 W:f7 2.Sf6 W:e7# 1.Wf8 g:f8S 2.We4 Sd7#. Active sacrifice (black). Exchange of functions (bRh4/bSc8, Passive / Self-block). Exchange of functions (bRh4/bSc8, Self-block / Passive). Exchange of functions (wSh3/wRf6, Mate / Passive guard) × 2. Play on the same square (B1, 2). Promotion (S, 1). Pin-mate × 3. [Autorzy]
- 1940 PALLIER 1.b6! (1.Kg7? Se5! +- ; 1.Hc7? Kg2 2.Hc2+ Kg1 +- ; 1.f6? Sg5+ 2.Kh6 g2 -+) 1...Sg5+ (1...g2 2.Hf4+ Kg1 3.H:f3 h2 4.Hd1+ =) 2.Kh6! (2.Kg7? g2 3.Hc7+ Kh1 4.Hc6 We4 (Se4) -+) 2...g2 3.Hc7+ Kh1 4.Hc6! (4.b7? g1H -+) 4...Sf7+ (4...We4 5.b7 g1H 7.b8H Sf7+ 8.Kh7 =) 5.Kg7! (5.Kh7? We7! 6.f6 We6! 7.Hd5 [7.H:e6 Sg5+ -+] i np. 7...W:b6 -+) 5...Sd6! (5...Se5 6.H:e8 g1=H+ 7.Kh7 Hd4+ 8.Ha8+ Kg1 9.b7 =) 6.b7 (6.f6? We4! 7.H:d6 g1H+ 8.Kf8 Wh4 -+) 6...S:f5+ (6...We7+ 7.Kh8! [7.Kf6? W:b7 -+] 7...W:b7 8.Hf3! = ; 6...h2 (i np. 7.Kf6 Se4+ 8.Kf7 g1H 9.K:e8 =) 7.Kh7! (7.Kf7? Wb8! 8.Hf3 [8.Kf6 Wf8+ 9.Ke5 Sh4+] 8...W:b7+ 9.Kf6 Wh7 -+) 7...Wb8 (7...Wd8 8.Hf3 Kh2 9.H:f5 g1H 10.Hc2+ Hg2 11.Hc7+=) 8.Hf3! Sg3! 9.H:g3 W:b7+ 10.Kh8! g1H 11.Hf3+ Hg2 12.Hd1+ Kh2 13.Hd6+ Kg1 (13...Hg3 14.Hd2+ =) 14.Hc5+! (14.Hd4+? Hf2 15.Hd1+ i np. 15...Kg2 16.Hd5+ Hf3 17.Hg5+ Kf1 18.Hc1+ Ke2 19.Hc2+ Ke3 20.Hc3+ Kf4 21.Hf6+ Kg4 etc.) 14...Hf2 15.Hg5+! Kf1 (Kh6 zamiast Kh8, 15...Hg2 doprowadziłoby do pata.) 16.Hc1+ Ke2 (16...He1 17.Hf4+ Ke2 18.He5+! Ke1 [18...Kd2 19.Ha5+ !=] 19.Ha1+ Ke2 20.He5+ pozycyjny remis.) 17.Hc2+! (17.Hc4+? Kd1 18.Hd5+ Ke1 19.H:b7 i np. 19...Hh4+ 20.Kg8 h2 -+) 17...Ke3 18.Hc5+ Kf3 19.Hf5+! Kg3 20.Hg5+! Kh2 21.He5+ Hg3 22.He2+ Hg2 23.He5+ pozycyjny remis.