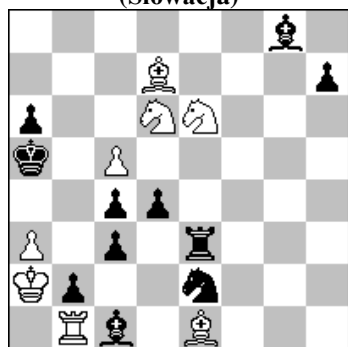


POLSKI ZWIĄZEK SZACHOWY 2019

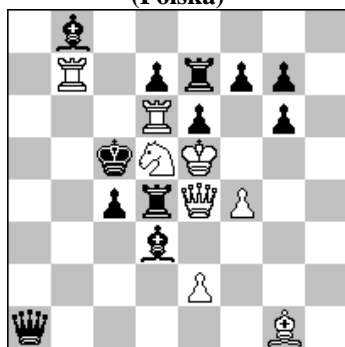
ORYGINAŁY 10 XII 2019 [1947-1952]

1947. Zoltan LABAI
(Słowacja)



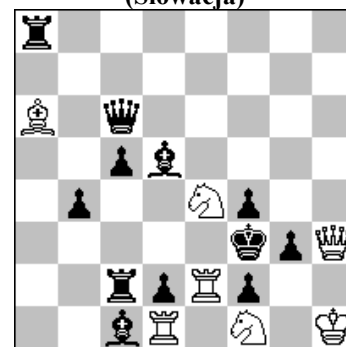
s#2 (8+11)

1948. Jarosław BRZOWICZ
(Polska)



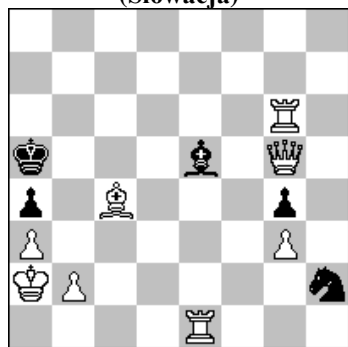
s#2 (8+12)

1949. Jozef HAVRAN
(Słowacja)



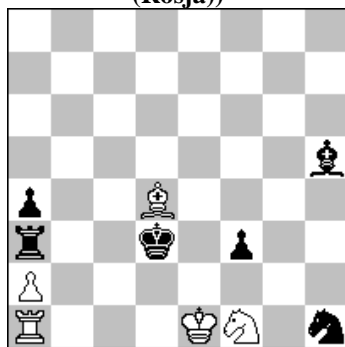
s#3 (7+12)

1950 Stanislav VOKAL
(Słowacja)



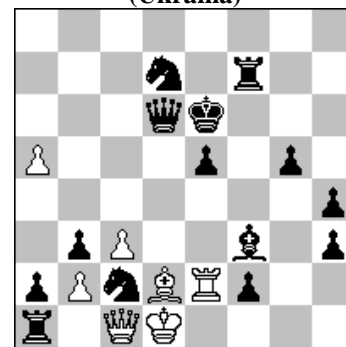
s#5 (8+5)

1951. Wiktor CZEPIŹNY
(Rosja))



h#2 4 rozwiązania (5+6)

1952. Wiktor JUZIUK
(Ukraina)



h#3 2 rozwiązania (7+14)

- 1947. LABAI** 1...d3 2.G:c3+ S:c3# 1...G:e6 2.S:c4+ G:c4# 1.Se6 ~ ? 2.S:c4+ G:c4# 1...We6! 1.S:d4! 2.Sb3+ c:b3# 1...We6 2.G:c3+ S:c3# 1...S:d4 2.S:c4+ G:c4#. Theme Ruchlis. [Autor]
- 1948 BRZOWICZ** 1...W:d5#? 1...G:e4 2.G:d4+ H:d4# 1.Sc3? ~ 2.Hd5+ e:d5# 1...H: 2.H:d4+ H:d4# 1...G:e4!/1...Ga7! 1.Sb4! ~ 2.Hd5+ e:d5# 1...H:g1 2.H:d4+ H:d4# (2.Hd5+? W:d5+ 3.S:d5?) 1...G:e4 2.G:d4+ H:d4# 1...Ga7 2.Wd5+ e:d5# (2.Hd5? e:d5+ 3.W:e5?).Temat 18 Warsaw GP w wersji s#2:dwie pary gier zakończone tymi samymi matami. Dodatkowo temat częstochowski,tutaj uwolnienie raz czarnej, raz białej W. [Autor].
- 1949 HAVRAN** 1.Sc3? ~ 2.W:f2+ K:f2+ 3.Hg2+ G:g2# 1...b:c3 a 2.We3+ A fe3 3.Hg4+ H:g4# 1...Wh8 2.S:d2+ W,G:d2 3.Hh5+ W:h5# 1...Hh6 2.S:d2+ W,G:d2 3.Hh5+ H:h5# 1...W:c3! 1.S:c5? ~ 2.W:f2+ K:f2+ 3.Hg2+ G:g2# 1...W:c5 b 2.We3+ A fe3 3.Hg4+ H:g4# 1...H:c5! 1.Sf6? ~ 2.W:f2+ K:f2+ 3.Hg2+ G:g2# 1...H:f6 c 2.We3+ A fe3 3.Hg4+ H:g4# 1...Wh8! 1.Sd6! ~ 2.W:f2+ K:f2+ 3.Hg2+ G:g2# 1...H:d6 d 2.We3+ A fe3 3.Hg4+ H:g4# 1...Wh8 2.S:d2+ W,G:d2 3.Hh5+ W:h5#. Theme Rukhlis. [Autor]
- 1950 VOKAL** 11.Ga6! Sf1(Sf3) 2.Hd8+ Gc7 3.Hd2+ S:d2 4.We5+ G:e5 5.b4+! a:b3# e.p.! 1.Gd3?, 1.Ge2?, 1.Gf1?
- 1951 CZEPIŹNY** 1.Gf7 Sg3 A 2.Gc4 O-O-O# C 1.Gg6 Se3 B 2.Ge4 Wd1# D 1.Sg3 (Sf2?) O-O-O+ C 2.Ke2 S:g3# A 1.Kc2 Wd1 D 2.We3+ (W:a2?) S:e3# B.
- 1952 JUZIUK** 1.W:c1+ K:c1 2.Kf5 W:e5+ 3.Kg4 W:g5# 1.G:e2+ K:e2 2.Kf6 Hg1 3.He6 H:g5#. Active sacrifice (black) × 2, Exchange of functions (wQc1/wRe2, Captured / Mate), Kniest theme (white) × 2, Play on the same square (W3, 2), Zilahi (passive, QR, 2), Model mate × 1, Mates on the same square × 2, 1.G:e2+ K:e2 2.Kf6 Hg1 3.He6 H:g5#. [Autor]