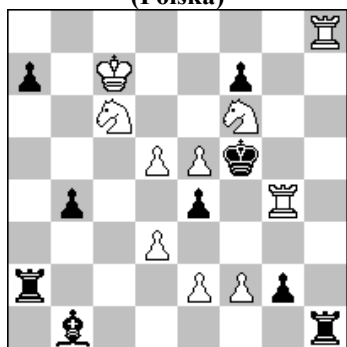


POLSKI ZWIĄZEK SZACHOWY 2019

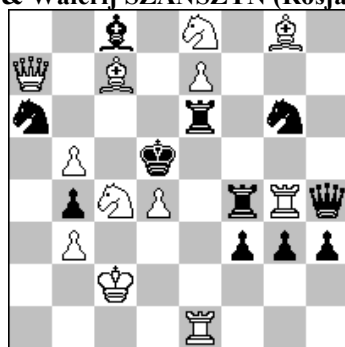
ORYGINAŁY 30 VII 2019 [1833-1838]

1833. Stefan PARZUCH
(Polska)



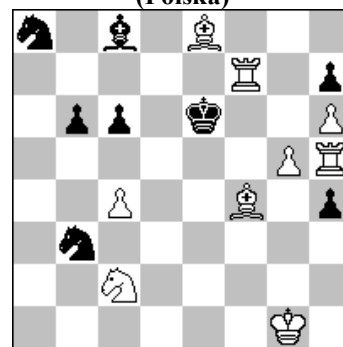
#2 (10+9)

1834. Anatolij WASYLENKO (Ukraina)
& Walerij SZANSZYN (Rosja)



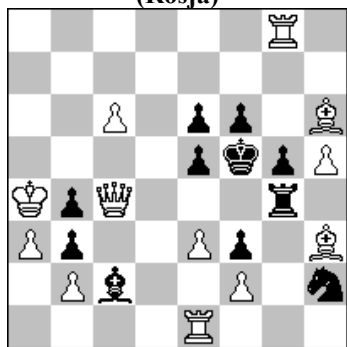
#2 (12+11)

1835. Stefan MILEWSKI
(Polska)



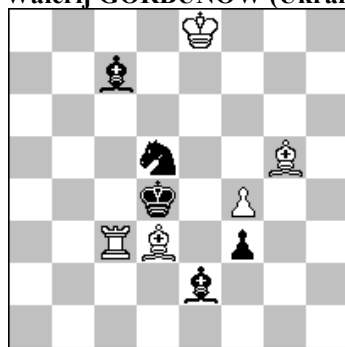
#3 (9+8)

1836. Grigorij ATAJANC
(Rosja)



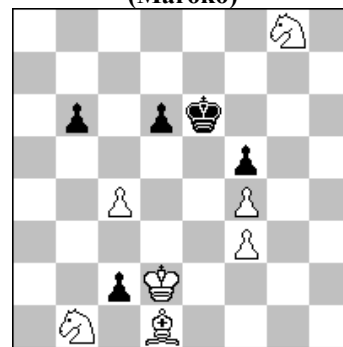
#3 (12+11)

1837. Dmitrij GRINCZENKO
& Walerij GORBUNOW (Ukraina)



h#2 b) Gg5→d8 (5+5)

1838. Abdelaziz ONKOUD
(Maroko)



h#3 2 rozwiązania (4+3)

1833. **PARZUCH** 1.Kd6? ~ 2.Sd4#/Se7# 1...Wa6! 1.We8? ~ 2.Sd4# (Se7?) 1...Wc1! 1.d4? ~ 2.Se7# (Sd4?) 1...Wc2! 1.f4! ~ 2.Sd4#/Se7# 1...Wc1 2.Wh5# 1...Wc2 2.d:e4# 1...e:f3 ep. 2.e4# 1.Wg8? Wh5! W 2 fazach pojawiają się ideowe podwójne groźby, a w 2 [1.d4? i 1.We8?] – temat Suszkowa. Trzykrotne związanie Sc6 jako oablenie prób.
- 1834 **WASYLENKO & SZANSZYN** 1.Kd3? – 2.Se3 A/Sb6# B 1...Sc5+ 2.H:c5# 1...Se5+ 2.W:e5# 1...W:d4+ 2.H:d4# 1...Wf7! a 1.Sed6? – 2.Se3# A 1...Wf7 a 2.Sb6# B (2...W:b6?) 1...Sc5/c7 2.H:c5# 1...W:d4 2.H:d4# 1...We4! 1.Ge5! – 2.Sb6# B 1...Wf7 a 2.Se3# A (2...W:e3?) 1...S:e5 2.W:e5# 1...W:d4 2.H:d4#. First original synthesis: double Ventura theme (the key closes line of lack pinned piece, which Black unpins in defence); Barnes theme; Dombrovskis theme; - le Grand theme; - double B (Somov) theme. [Autorzy]
- 1835 **MILEWSKI** 1.g6! ~2.Whf5 ~3.W5f6# 1...h3 2.W:h3 ~3.We3# 2...Sd2 3.Sd4# 2...Sc5 3.Sd4# 1...b5 2.c5 ~3.We5# 2...S:c5 3.Sd4# 1...h:g6 2.Wg5 ~3.W:g6# 1...Sc7 2.G:c7 We5# .
- 1836 **ATAJANC** 1...e4 2.We8 - 3.H:e6# 1...Gd3 2.e4+ Kf4 3.Hc1# 2...G:e4 3.H:e4# 1.K:b4? tempo 1...e4 2.We8 - 3.H:e6# 1...Gd3 2.e4+ Kf4/ G:e43.Hc1/ H:e4# 1...Ge4! 1.H:b4! - 2.e4+ Kf4/ G:e4 3.Hd2/ H:e4 # 1...e4 2.Hf8 - 3.W:g5# 2...e5/ Ke5 3.Hc8/ Hc5# 1...Ge4 2.W:g5+ f:g5 3.Hf8#..
- 1837 **GRINCZENKO & GORBUNOW** a)1.G:f4 G:e2 2.Ge5 We4# b)1.G:d3 G:c7 2.Ge4 Ge5#. Буковинская тема со взятием блокирующих фигур. [Autorzy]
- 1838 **ONKOUD** 1.c:d1G Sc3 2.Ga4 Se4 3.Gd7 Sg5# 1.c:b1H Gc2 2.Hb5 Ge4 3.Hd7 Gd5#. Azemmour 7 theme (white anti-monopoly, black monopoly) Exchange of functions (wSb1/wBd1, Mate / Captured) Long-trip (B, 3) Long-trip (S, 3) Many ways (p, 2) Play on the same square (W2, 2) Promotion (qb) Zilahi (passive, BS, 2) Final position Model mate × 2 Meredith. [Autor]