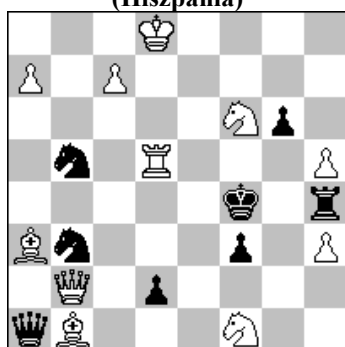


POLSKI ZWIĄZEK SZACHOWY 2019

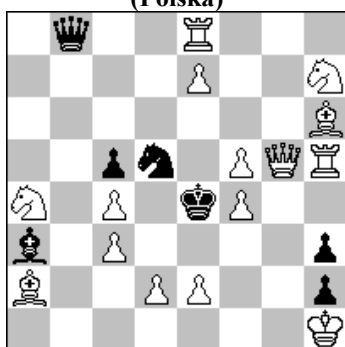
ORYGINAŁY 9 VII 2019 [1815-1820]

1815. Miguel URIS  
(Hiszpania)



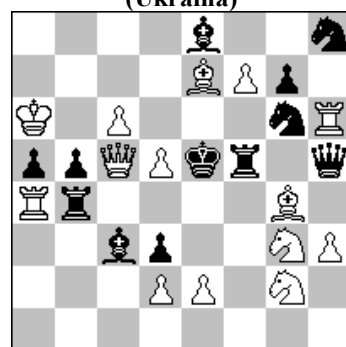
#2 (11+8)

1816. Bogusz PILICZEWSKI  
(Polska)



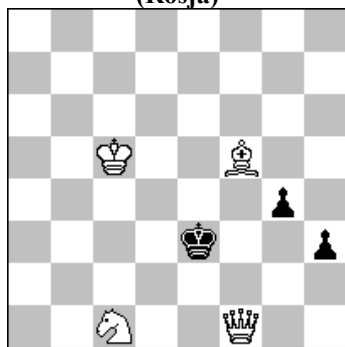
#2 (15+7)

1817. Ewgeny GAWRYLIW  
(Ukraina)



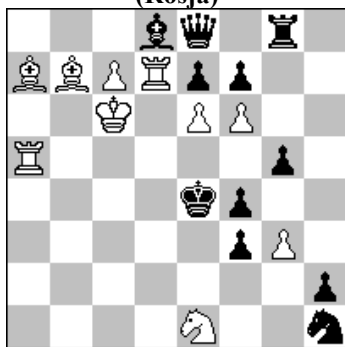
#2 (14+12)

1818. Daria MOTUZ  
(Rosja)



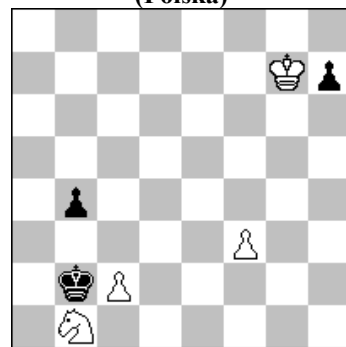
#3 (4+3)

1819. Jurij GORBATIENKO  
(Rosja)



#3 (10+11)

1820. Edward PAŁŁASZ  
(Polska)



+ (4+3)

- 1815. URIS** 1...g6~ 2.Wf5# 1...Sb5~ 2.G(:)d6# 1...Sb3~ 2.H:d2# 1...d2~ 2.Hh2# 1...Ha1~ 2.He5# 1.h:g6? ~ 2.Wf5# 1...Sd6/d4 2.G(:)d6# 1...Wh5 2.S:h5# 1...S3d4 2.H:d2# 1...d1H 2.Hh2# 1...H:b1 2.He5# 1...Wh8+! 1.Gc5? ~ 2.Ge3# 1...d1S A 2.Hh2# 1...S5d4 G 2.Gd6# 1...S:c5/d4 2.H:d2# 1...H:a7 2.He5# 1...f2! 1.G:g6! ~ 2.Wf5# 1...d1H C 2.Hh2# 1...S5d4 A 2.Gd6# 1...W:h5 2.S:h5# 1...S3d4 2.H:d2# 1...Hb1/:f1 2.He5# 1...Sd6 2.G:d6#.#. DM-22-33 combined change of classic motifs abAB/cbCA theme RopkeA - direct guard of the threat square; B - interference of threat unit's line; C - pinning of the threat unit. [Autor]!
- 1816 PILICZEWSKI** 1.Hg3? ~ 2.Hf3, Hd3, d3# 1...Hb1+ 2.G:b1# 1...S:f4 2.He3# 1...H:f4! 1.f6? ~ 2.Hf5, H:d5, Hg6# 1...Hb1+ 2.G:b1# 1...He5 2.H:e5, Gb1# 1...S:f4 2.Hf5# 1...Se3 2.d3# 1...S:c3! 1.Hg7? tempo 1...Sf6 2.S:f6# 1...Se3 2.Sf6, d3# 1...S:c3 2.S:c3# 1...Sb4 2.Sf6, S:c5# 1...Sb6 2.Sf6, Gb1# 1...Sc7 2.He5, Sf6# 1...S:e7 2.Sf6# 1...Gb2 2.S:c5, Gb1# 1...Gc1 2.S:c5# 1...Gb4 2.Gb1# 1...Ha8/Hc8/Hd8/H:e8/He5/Ha7 2.He5, Gb1# 1...Hb7/Hb6/Hb5/Hb4/Hb3/Hb2 2.He5# 1...Hb1+/Hc7/Hd6/H:f4 2.G(:)b1# 1...S:f4! 1.Hf6! tempo 1...S:f6 2.S:f6# 1...S:f4 2.Sg5# 1...Se3 2.d3# 1...S:c3 2.S:c3# 1...Sb4 2.S:c5# 1...Sb6 2.Gb1# 1...Sc7 2.He5# 1...S:e7 2.Hc6# 1...Gb2 2.S:c5, Gb1# 1...Gc1 2.S:c5# 1...Gb4 2.Gb1# 1...Ha8/Hd8/H:e8/Ha7 2.He6/He5, Gb1# 1...Hc8/He5 2.He5, Gb1# 1...Hb7/Hb5/Hb4/Hb3/Hb2 2.He6/He5# 1...Hb1+/Hc7/Hd6/H:f4 2.G(:)b1# 1...Hb6 2.He5#.- BS wheel.- Black correction.-White combinations. [Autor]
- 1817 GAWRYLIW** 1.f8H? ~ 2.Gd6# A 1...Wf6 2.d6# B 1...Gf7 2.Hb8# 1...S:f7! 1.e3? ~ 2.Hd6# C 1...Wf6 2.d6# B 1...Sf7! 1.f8S? ~ 2.d6# B 1...Gd4 2.Hd6# C 1...Sf4 2.Gd6# A 1...Gf7 2.Sd7# 1...S:e7 2.We6# 1...G:c6 2.dc6# 1...Wc4! 1.Sf4!! ~ 2.S:d3# 1... Wf:f4 2.d6# A 1... S:f4 2.Gd6# B 1... Wb:f4 2.Hd6# C 1... K:f4 2.He3#. Double pseudo-le Grand, Rukhlis, four defenses and three mats on one field in the solution (Baltic theme in three versions). The effect of "gone-come" in attempts against the background of the change of the mat. Subject Shedey in two options. [Autor]
- 1818 MOTUZ** 1.Sd3! ~ 2.Hf2# 1...Kd2 2.Hf2+ Kc3 3.Hb2# 2...Kd1 3.G:g4# 1...g3 2.He1+ Kf3 3.He4#.
- 1819 GORBATIENKO** 1.g4! - 2.Wf5 ~ 3.Kb5# 2...H:d7+ 3.K:d7# 1...Sg3 2.Gf2 ~ 3.Kb6# 2...G:c7/H:d7+ 3.K:c7/K:d7# 1...f:e6 2.Kb5+ Ke5 3.Gd4# 1...f2 2.Kb6+ Ke3 3.We5#. Dwa systemy gry: I - posunięcia antykrytyczne i maty z baterii królewskiej [groźba i 1...Sg3]; II - blokowania dalekich pól królewskich i zamiana funkcji Wa5 i Ga7 przy grze baterii K-G w 2. ruchu [f:e6 i 1...f2]..
- 1820 PAŁŁASZ** 1.c4 b:c3 2.S:c3 K:c3 3.Kf6 Kd4 4.f4 h5 5.Kg5 Ke4 6.f5 h4 7.f6 h3 8.f7 h2 9.f8H h1H 10.Ha8+. Żywa gra wstępna prowadzi do końcówki pionkowej.