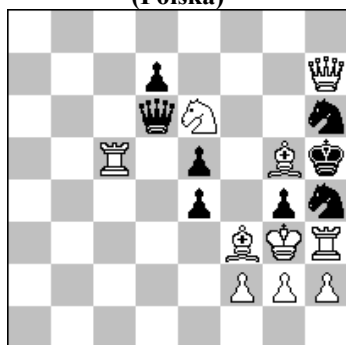


POLSKI ZWIĄZEK SZACHOWY 2019

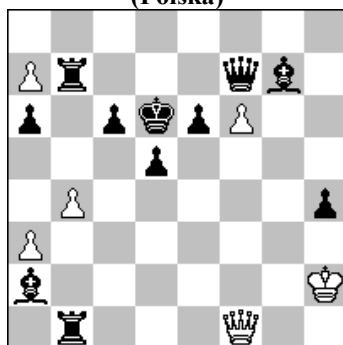
ORYGINAŁY 5 II 2019 [1682-1687]

1682. Eugeniusz IWANOW
(Polska)



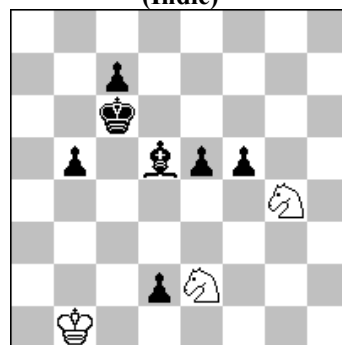
s#2 (10+8)

1683. Stefan MILEWSKI
(Polska)



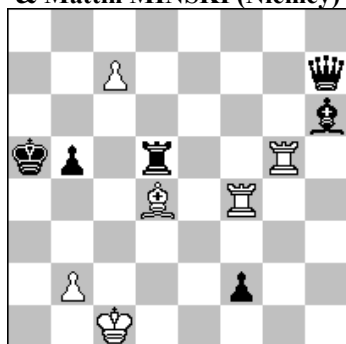
h#2 4 rozwiązania (6+11)

1684. Dr Phani BHUSHAN
(Indie)



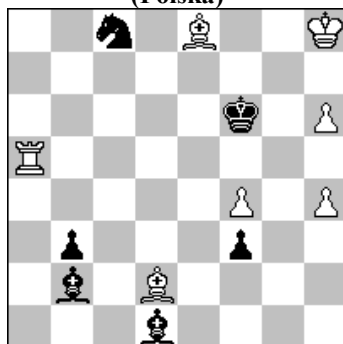
h#3 2 rozwiązania (3 +7)

1685. Michal HLINKA (Słowacja)
& Mattin MINSKI (Niemcy)



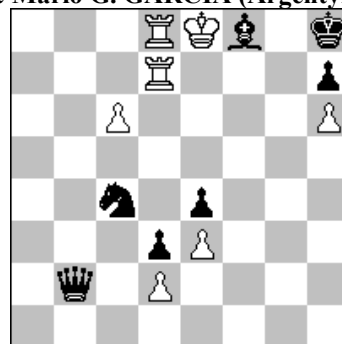
= (6+6)

1686. Andrzej JASIK
(Polska)



+ (7+6)

1687. Peter S. KRUG (Austria)
& Mario G. GARCIA (Argentyna)



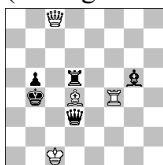
+ (7+7)

1682 IWANOW 1.G:h4,d8? ~ 2.Hf5+ S:f5# 1...He7! 1.Gf6? d:e6! 1.Ge7! ~ 2.Hf5+ S:f5# 1...H:e7 2.W:h4+ H:h4# 1...Hd2 2.Sf4+ H:f4# 1...H:e6 2.G:g4+ H:g4# 1...d:e6 2.W:e5+ H:e5#.

1683 MILEWSKI 1.h3 Kg3 2.Ke5 Hf4# 1.W:b4 H:b1 2.Kc5 H:b4# 1.Wd7 Hb5 2.Kc7 Hb8# 1.Hd7 f:g7 2.Ke7 Hf8#. Maty wzorowe tworzące echo .

1684 BHUSHAN 1.Gf3 Kc2 2.Kd5 K:d2 3.Ke4 Sf6# 1.Kc5 Kb2 2.Kc4 Ka3 3.c5 S:e5#. Bristol theme. Absolute unity between the two solutions. Model mates. [Autor]

1685 HLINKA & MINSKI 1.b4+! (1.c8H? f1H+ 2.W:f1 G:g5+ 3.Ge3 G:e3#) 1...K:b4! 2.c8H f1H+! 3.W:f1 Hd3! (3...G:g5+ 4.Kb2=) 4.Wf4! switchback 4...G:g5 (4...Kb3 5.Hc6!)=)



5.Hc5+!! punta (5.Gc3+? Kb3!-+ [5...Ka3? 6.Hc5+! W:c5 pat wzorowy z podwójnym związaniem]) 5...W:c5+ (5...Ka4 6.H:d5 G:f4+ 7.Kb2 Ha3+ 8.Kb1=; 5...Kb3 6.H:d5+ Hc4+ 7.H:c4+=) 6.Gc3+ Ka3 pat wzorowy z podwójnym związaniem.

1686 JASIK 1.Kg8 (1.h7? Ke7+ 2.Kg8 K:e8 -+) 1...Se7+ (1...Ke7 2.Gb5 Gc2 3.Wa6 Gd4 4.f5 Sb6 5.h7 b2 6.h8H G:h8 7.W:b6 -+) 2.Kf8 Sg6+ 3.G:g6 K:g6 4.Kg8! (4.f5+? Kh7 =) 4...f2 5.h7 (5.f5+? Kh5 6.f6+ Kg4 7.Wa4+ Kh3 8.f7 f1H 9.f8H Hd3 =) 5...f1H 6.h5+! G:h5 7.f5+! H:f5 8.Wa6+ Gf6 9.h8S#.

1687 KRUG & GARCIA 1.Kf7! (1.Wf7? He5+ 2.K:f8 He6=) 1...Sd6+ (1...Se5+ 2.K:f8 Ha3+ 3.Ke8!+- [3.Wd6? Ha7! 4.W6d7 S:d7+ 5.c:d7 H:d7 6.W:d7= pat]) 2.W:d6 Hb7+ (2...Hb8 3.Ke6 Hb3+ 4.Ke5+-) 3.K:f8!! Zhuda: 3.W6d7? Hb3+ 4.Wd5 (4.Kf6 Hg8 5.c7 Hg6+ 6.Ke5 Hg5+ 7.Kd4 Hf6+ 8.K:e4 He6+ 9.K:d3 Hf5+= lub 4.K:f8 He6! 5.Wf7 Hd7! 6.c7 H:d8+ 7.c:d8H= pat) 4...Hb7+ 5.K:f8 Hd7 6.We8 He6 7.Wd6 Hf6+ 8.W:f6= pat; Zhuda: 3.Kf6? Hf7+! 4.Kg5 (4.Ke5 Kg8! 5.W6d7 Hh5+!)= 4...Hg8+ 5.Kf5 G:d6 6.W:g8+ K:g8 7.Ke6 Gg3 8.Kd7 Kf7 9.c7 G:c7 10.K:c7 Kg6 11.Kd6 K:h6 12.Ke5 Kg5 13.K:e4 Kg4 14.K:d3 Kf3! 15.e4 Kf4 16.Kd4 h5! 17.e5 Kf5 18.Kd5 h4 19.e6 h3! 20.e7 h2 21.e8H h1H+ 22.Kc5 Hc1+=; 3...Hd7 4.We8! (4.c7? H:d8+ 5.c:d8H= pat)