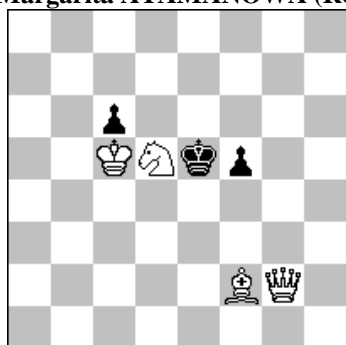


POLSKI ZWIĄZEK SZACHOWY 2018

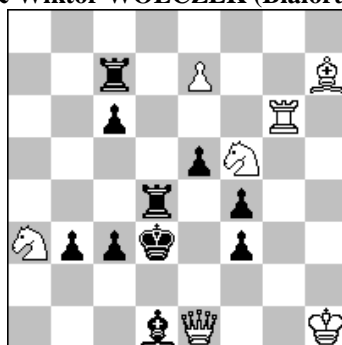
ORYGINAŁY 29 V 2018 [1466-1471]

1466. Władimir KOŻAKIN
& Margarita ATAMANOWA (Rosja)



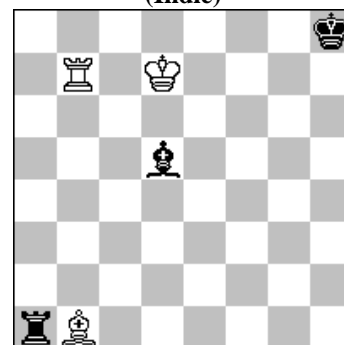
#3 b) Sd5→b8 (4+3)

1467. Leonid MAKARONEZ (Izrael)
& Wiktor WOŁCZEK (Białoruś)



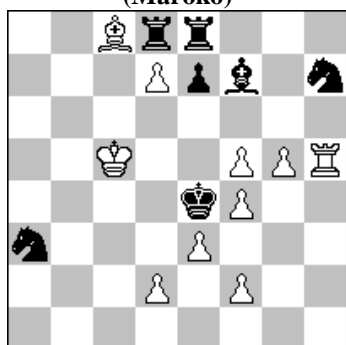
#3 (7+10)

1468. Rajendiran RAJU
(Indie)



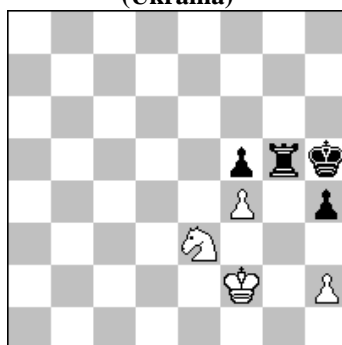
h#2 b) cz.Ga1 (3+3)

1469. Abdelaziz ONKOU
(Maroko)



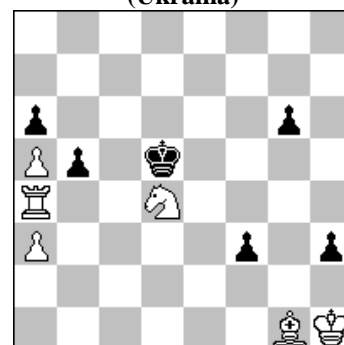
h#2 4 rozwiązania (10+7)

1470. Jurij BIŁOKIN
(Ukraina)



h#2,5 2 rozwiązania (4+4)

1471. Walerij KOPYL
(Ukraina)



h#3 2 rozwiązania (6+6)

- 1466 KOŻAKIN & ATAMANOWA** a) 1...f4 2.Hg6 c:d5 3.Gd4# 1.Sf4,c7? Kf6! 1.K:c6? ~ 2.Hg5 1...f4! 1.Gh4! ~ 2.He2# 1...c:d5 2.Gg5 f4, Ke6 3.H:d5# 1...Ke6 2.Hg6+ Kd7/Ke5 3.H:c6/He8# 1...f4 2.He2+ Kf5 3.Se7# b) 1.S:c6+? Ke6 2.Hg7 f4 3.Sd4# 1...Kf4 2.Hg3+ Ke4 3.He3# 1...Kf6! 1.H:c6/Hg6? - Kf4/Ke4! 1.Gh4! ~ 2.S:c6+ Ke6/Kf4 3.Hd5/Gg5# 1...Ke6 2.Hg7 f4 3.Hf6# 1...Kf4 2.Gg5+ Ke5 3.He2# 1...f4 2.Hg6 f3 3.Gg3#. Mates by different pieces on the same square d4. [Autorzy]
- 1467 MAKARONEZ & WOŁCZEK** 1.Sh6! ~ 2.Wd6+ e4 3.Ge4# 1...Ge2 2.Wc6+ We4 3.Hc3# 1...Wd5 2.Wg2+ Kd4 3.Hf2# 1...e4 2.Hd1+ Ke3 3.Sg4# 1...We7 2.Wc6+ e4 3.Wc3#.
- 1468 RAJU Dedication to Great Macedonian Composer Živko Janevski!** a) 1.Wa8 Kd6 2.Wg8 Wh7# b) 1.Kg8 Ke8 2.Gh8 Gh7#. Mates on same square h2. [Autor]
- 1469 ONKOU** 1.S:g5 Ga6 2.Sf3 d3# 1.W:d7 Wh3 2.Wd3 f3# 1.Gc4 g6 2.Gd3 Gb7# 1.R:f5 d:e8S+ 2.Rg6 Wh6#. Le couple g5/d7 qui est capturé dans E1 , ouvre pour le couple Th5/Fc8 dans E2. TOF. [Autor]
- 1470 BIŁOKIN** 1...Sd1 2.Kg4 Ke3 3.Wh5 Sf2# 1...Sd5 2.Kg4 Kg2 3.Wh5 h3#. Black Constant. Place exchange (white, KS). Ideal mates. [Autor]
- 1471 KOPYL** 1.Ke4 S:f3+ 2.K:f3 Wf4+ 3.Kg3 Gh2# 1.Kc5 S:b5+ 2.K:b5 Wb4+ 3.K:a5 Gb6#. Sacrifices of the white knight with the homogenous functions of the rook and bishop. Model mates. The active black king. [Autor]