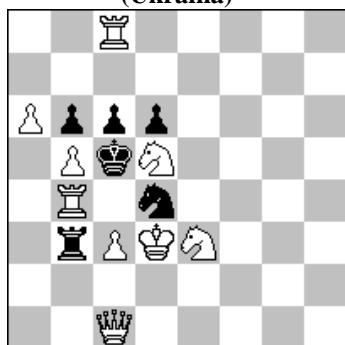


POLSKI ZWIĄZEK SZACHOWY 2018

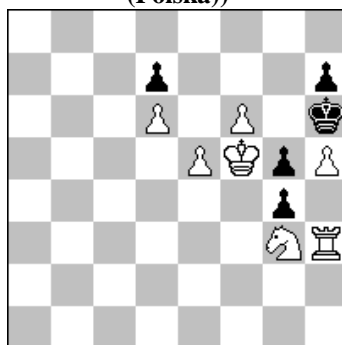
ORYGINAŁY 25 IX 2018 [1568-1573]

1568. Anatolij WASYLENKO
(Ukraina)



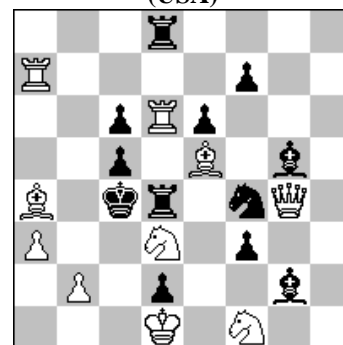
#2 (9+6)

1569. Andrzej BABIARZ
(Polska)



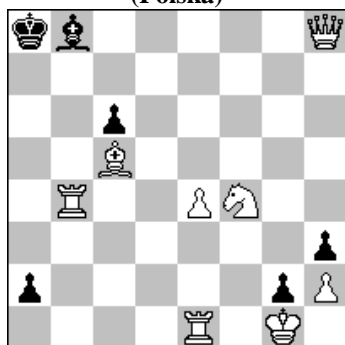
#3 b) Pe5→c5 (7+5)

1570. Rauf ALIOVSADZADE
(USA)



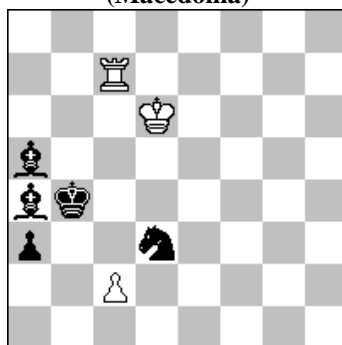
#3 (10+12)

1571. Marian FRAK
(Polska)



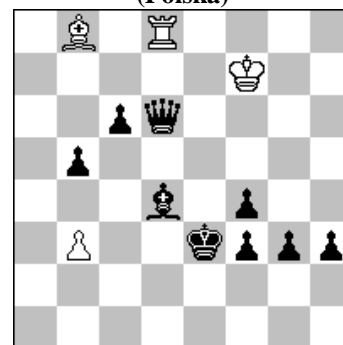
s#6 b) Pa2→b2 (8+6)

1572. Živko JANEVSKI
(Macedonia)



h#2 3 rozwiązania (3+5)

1573. Stefan MILEWSKI
(Polska)



h#3 2 rozwiązania (4+9)

- 1568 WASYLENKO** 1.Ke4? (uwolnienie bP) ~ 2.c:d4# A 1...S~ 2.W:c6# 1...S:b5 2.Wc4# B 1...W:b4! a 1.Sc7? (uwolnienie cz.P) ~ 2.Wc4# B 1...c:b5 2.Se6# 1...W:b4 a (uwolnienie bP) 2.c:d4# A 1...d5! 1.Ha3? ~ 2.W:b3# 1...W:a3! 1.Hb1? tempo 1...W:c3+! 1.Hb2! tempo 1...W:b4 a 2.H:b4# 1... Wa3 S:b5 2.Wc4# B 1...W:b2 (uwolnienie bP) 2.c:d4# A 1...W:c3+ 2.H:c3# 1...S~2.W:c6#. Dombrovskis effect with mate change (Aa-aA-aX). Pseudo le Grand (AB-BA). White and black unpin. Battery elimination. Rook-cross. [Autor]
- 1569 BABIARZ** a) 1.e6? d:e6+ 2.K:g4 e5 3.Sf5# 1...g:h3! A. Retronaliza: ostatni ruch czarnych wyłącznie 0...g7-g5; 1.hg6+ e.p.! B g:h3 2.g7 h2 3.g8S#! b) 1.h:g5+ e.p.? B g:h3 2.g7 g2 3.g8S#! Retroanaliza: możliwym było 0.e:f6+ Kg7-h6! - bicie e.p.niemożliwe. 1.c6! g:h3 A 2.Kg4 ~ 3.Sf5#. Zamiana matów w zadaniu retro. [Autor]
- 1570 ALIOVSADZADE** 1.Wa5! ~ 2.W:c5+ K:d3 3.Gc2# 1...K:d3 2.Gc2+ Kc4 3.Se3# 1...W:d3 2.b3+ W:b3 3.S:d2# 1...S:d3 2.W:c5+ K:c5 (S:c5) 3.H:d4# 1...G:f1 2..W:c5+ K:d3 3.H:f3#. Here the repetition of W:c5 (Lincoln theme) is combined with three black units capturing a white unit on the same square. [Autor]
- 1571 FRAK** a) 1.Wd1! a1H 2.H:a1+ Ga7 3.Wd5 c:d5 4.Gd4 d:e4 5.Gf2 e3 6.Se2 e:f2# 1.Hf8! b1H 2.Wa4+ Kb7 3.W:b1+ Kc7 4.Wd4 Ga7 5.Gd6+ Kd7 6.Gb8+ G:d4#. Dwa maty wzorowe po ciekawej grze.
- 1572 JANEVSKI** 1.Sc1 Wc5 2.Sb3 c3# 1.Kb5 Wc6 2.Sb4 c4# 1.Gb3 Wb7+ 2.Ka4 c:b3#. A setting of organized disharmony with mates by Wpc2 triple play in an economical Gravure position. [Autor]
- 1573 MILEWSKI** 1.Ha3 G:f4+ (W:d4?) 2.K:f4 Kg6 3.Kf4-g4 W:d4# 1.Hb4 W:d4 (G:f4+?) 2.K:d4 Ke6 3.Kd4-c5 Ga7#. Zilahi. Sacrifice white. Mats models. Dual avoidance. [Autor]