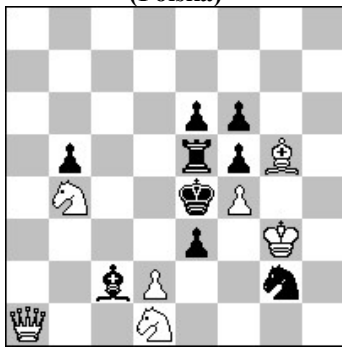


POLSKI ZWIĄZEK SZACHOWY 2018

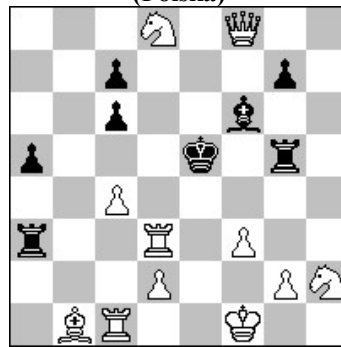
ORYGINAŁY 18 XII 2018 [1670-1675]

1670-. Stefan PARZUCH
(Polska)



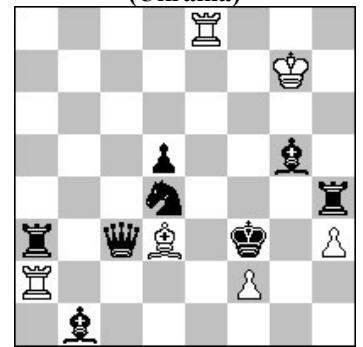
#2 (7+9)

1671. Stefan MILEWSKI
(Polska)



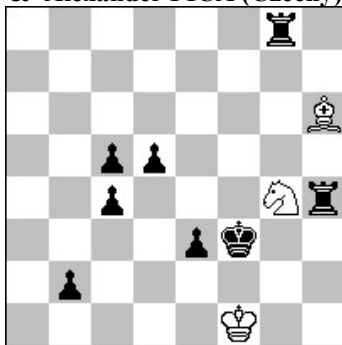
#2 (11+8)

1672. Iwan SOROKA
(Ukraina)



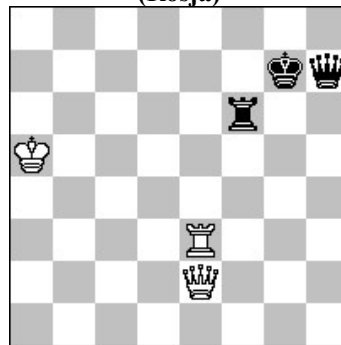
h#2 b) We8→b3 (6+8)

1673. Zoltan LABAI (Słowacja)
& Alexander FICA (Czechy)



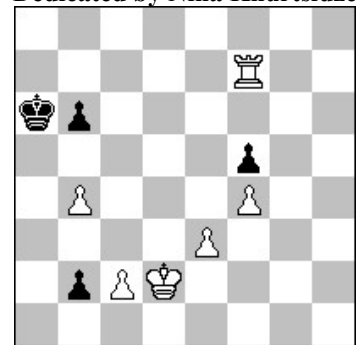
h#2,5 4 rozwiązania (3+8)

1674. Władimir KUZMICZEW
(Rosja)



+ (3+3)

1675. Umut SAYMAN (Turcja)
Dedicated by Nina Khurtsidze



= (6+4)

- 1670 PARZUCH 1.Ha7? ~ 2.Sc3# 1...G:d1 2.d3# 1...Wc5! 1.d:e3? ~ 2.Hd4# 1...S:e3 2.Sf2# 1...Wd5!
1.G:f6! ~ 2.H:e5# 1...Wc5 2.Hd4# 1...Wd5 2.Sc3#. Hannelius z unikaniem duali.
- 1671 MILEWSKI 1...G:d8 2.We1# 1...Ge7 2.We1# 1.Wd4! ~ 2.Hc5# 1...G:d8 2.We4# (2.He4?) 1...Ge7 2.Hf4#
(2.We4?) 1...W:f3+ 2.S:f3# 1...K:d4 2.S:c6#. Anti-dual, Somov 1, Zilahi (white R & S), Exposure to check.
[Autor]
- 1672 SOROKA a) 1.Wf4 Gf1 2.Gd3 We3# b) 1.Gf4 Gc4 2.Hd3 G:d5# #. • Usual Grimshav (R/B) on the f4. English
Grimshav (Q/B) on d3. Umnov on the d3. [Autor]
- 1673 LABAI & FICA 1...G:e3 2.Kg3 Gf4+ 3.Kh3 Sf2# 1...Gf4 2.b1G Gh2 3.Ge4 Se5# 1...Gg5 2.Ke4 Sf2+ 3.Kd4
Gf6# 1...S:e3 2.Wg3 S:c4 3.Wg4 Sd2#.
- 1674 KUZMICZEW 1.Hg2+? Hg6! 2.Wg3 – b.W związuje cz.H 2... Wa6+! 3.Kb5 Wb6+! 4.Kc5 Wc6+! 5.Kd5 Wd6+!
6.Ke5 We6+! 7.Kf4 Wf6+! 8.Ke3 We6+! 9.Kf2 Wf6+! 10.Kg1 H:g3! 11.H:g3 Wg6! - echo – tym razem czarna
wieża związuje białego hetmana! 1.We7+! Wf7 2.He5+! Kg8 3.We8+! Wf8 (3.Hb8+ Kg7 4.He5+) 4.Hd5+! Hf7
5.We6!! – uwalnia cz.H 5... Hg7 6.We5+! (5... Ha7 6.Wa6+); 5... Hc7+ 6.Ka6!! Hc8+ 7.Kb5!! Hb8+ 8.Wb6+!
Ponadto: 5... Kh7 6.Hh1+! Kg8 7.Hg2+ Kh7 (7... Hg7 8.Wg6! – znów b.W związuje cz.H – wygrana) 8.Hh3+
Kg8 9.Hg4+ Kh7 10.Hh4+ Kg8 11.Hg5+ Hg7 12.Wg6! – i znów b.W związuje cz.H – wygrana!)
- 1675 SAYMAN 1.b5+! Ka5 (1...K:b5?? 2.c4+! K:c4 3.Kc2+ -) 2.Wa7+ Kb4 3.c3+ Kb3 4.Wa4! K:a4 5.Kc2 Ka3
6.Kb1 Kb3 7.c4! (7.e4? f:e4 8.f5 e3 9.f6 e2 10.f7 e1H#) 7...K:c4 8.e4! f:e4 9.K:b2! (9.f5?? Kb3! 10.f6 e3 11.f7 e2
12.f8H e1H#) 9...e3 10.Kc2= (10.f5?? e2+)