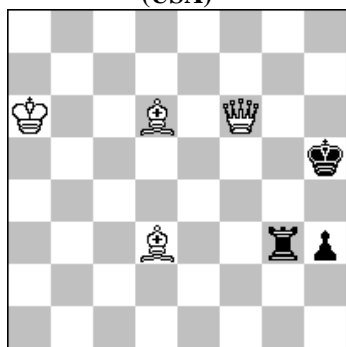


POLSKI ZWIĄZEK SZACHOWY 2017

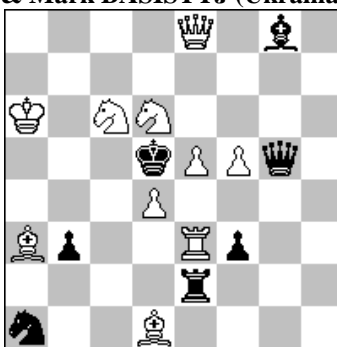
ORYGINAŁY 6 VI 2017 [1181-1186]

1181. Robert LINCOLN  
(USA)



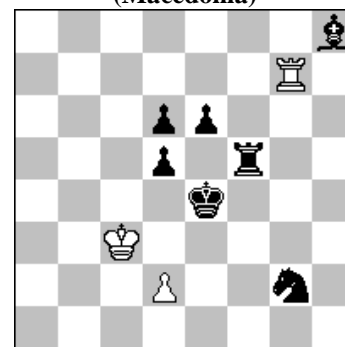
#2 (4+3)

1182. Anatolij WASYLENKO  
& Mark BASISTYJ (Ukraina)



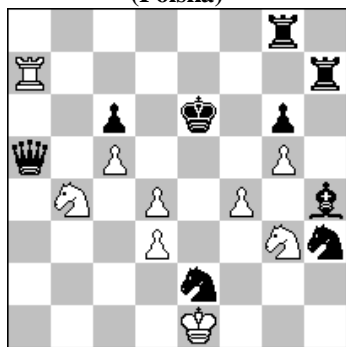
#2 (10+7)

1183 Živko JANEVSKI  
(Macedonia)



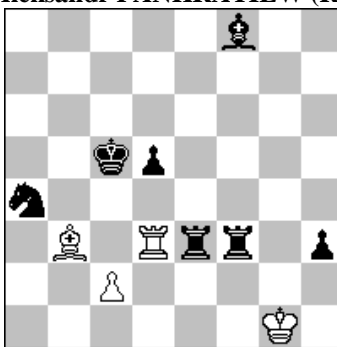
h#2 3 rozwiązania (3+7)

1184 Stefan MILEWSKI  
(Polska)



h#2 2 rozwiązania (9+9)

1185 Michaił GIERSZYNSKIJ (Ukraina)  
& Aleksandr PANKRATIEW (Rosja)



h#3 3 rozwiązania (4+7)

1186. Andrzej JASIK (Polska)  
& Mario GARCIA (Argentyna)



= (7+6)

1181 LINCOLN 1.G:g3? ~ 2.Hh4/Hg6/Ge2# 1...Kg4! 1.Ge2+? Wf3 G:3# 1...Wg4! 1.Gg6+? 1...Kg4 2.Hf4# 1...Kh6 2.Gf8# 1...W:g6! 1.Ge7! ~ 2.Hh4# 1...W:d3 2.Hg5# 1...Wg6 2.H:g6# 1...Wg5 2.H:g5# 1...Wg4 2.Hh8# 1...Kg4 2.Hf5#. 11 mates. [Autor]

1182 WASYLENKO & BASISTYJ 1.Hb8? ~ 2.Hb5# 1...K:c6 2.Hb7# (1...Wc2 2.G:f3#) 1...H:f5! 1.W:b3? ~ 2.Wb5# 1...S:b3 2.G:b3# (1...Wc2/b2 2.G:f3#) 1...Hc1! 1.Wd3? ~ 2.Sb4# 1...W:e5 2.d:e5# 1...Hd2 2.Se7# 1...Sc2! 1.Wc3! ~ 2.Wc5# 1...W:e5 2.H:e5# 1...Hc1 2.H:g8# (1...Wc2 2.G:f3#). The first two phases have the following common features: same-square mechanism in the threat, radical change of one variant, and refutations by black queen using weaknesses embedded in White's first moves. Remarkably, the second refutation is thematic and provides for a logical transition to the second group of phases, which jointly present the tourney theme with two changed mates and critical moves by black pieces. "A twomover of the future" (on the analogy of "helpmate of the future" and "SPG of the future"). [Autorzy]...

1183 JANEVSKI 1.e5 Wg3 2.Sf4 We3# 1.We5 Wf7 2.Se3 d3# 1.Ke5 Wg4 2.Gf6 d4#. Triple indirect unpin of the white Tg7 on the same square (e5) in an economical Meredith position. [Autor]

1184 MILEWSKI 1.Sc3 Sd5 2.S:f4 S:f4# 1.Sf2 Sf5 2.S:d4 S:d4#. Uwolnienia oraz zamiana funkcji białych skoczków. Maty wzorowe.

1185 GIERSZYNSKIJ & PANKRATIEW 1.Sc3 Ga4 2.Kc4 W:d5 3.Gb4 Gb3# 1.Wf2 W:e3 2.Kd4 K:f2 3.Sc5 c3# 1.We5 W:f3 2.Kd4 G:d5 3.Gc5 Wd3#

1186 JASIK & GARCIA 1.Sf2! (1.He2? Hg5 2.a3 Hg1+ 3.Ka2 H:h1+) 1...Hh2! (1...Sc4 2.Sd3 Hf1+ 3.Hb1÷) 2.Sd1 Sc2+ (2...Hh1 3.Hb1 S:d1 4.Gg7=) 3.Kb1 Sa3+ 4.Ka1 Hh5 (gra główna: 4...H:h8 5.Hb4+! [5.Hg2? Gc5 6.a:b6 Hd8 7.Sb2+ Ka5 8.b7 Hc7+] 5...G:b4 6.Sb2+ K:a5 7.c:b4+ K:b4= lub 7...Ka6= pat) 5.Hb3+! (5.Hd2? H:h8 6.Hd5 Sc4 7.a:b6 Ga3+) 5...K:a5 6.Gd4! He2 7.Se3! (7.Sf2? Sc2+ 8.Kb1 S:d4 9.c:d4 H:f2+) 7...Gd6 8.Hd1!= pozycyjny remis (8.c4? b4! 9.Hd1 H:d1+ 10.S:d1 Sc2+ 11.Kb2 S:d4+).