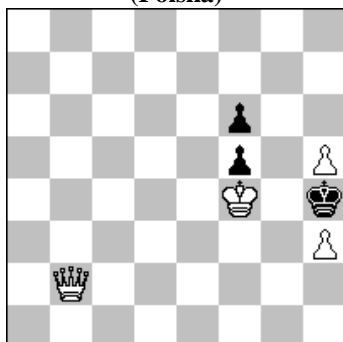


POLSKI ZWIĄZEK SZACHOWY 2016

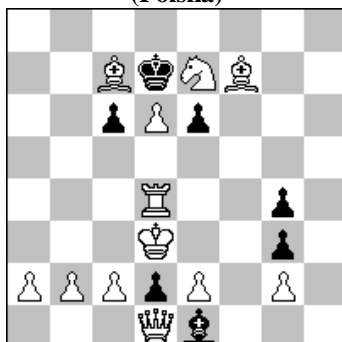
ROZWIĄZANIA 19 VII 2016 [929-934]

929. Marian FRAK
(Polska)



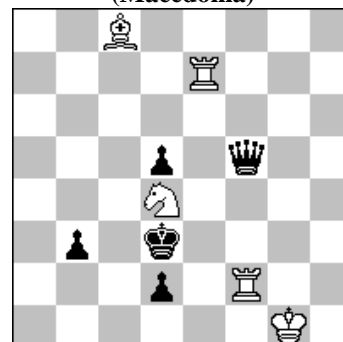
#2 (4+3)

930. Stefan MILEWSKI
(Polska)



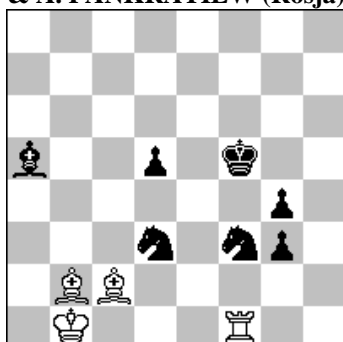
#3 (12+7)

931. Živko JANEVSKI
(Macedonia)



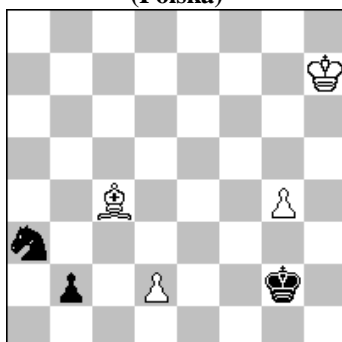
h#2 2 rozwiązania (5+5)

932. M. GIERSZYNSKIJ (Ukraina)
& A. PANKRATIEW (Rosja)



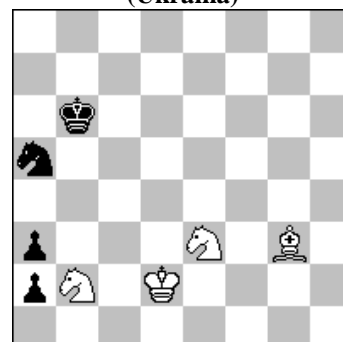
h#2 2 rozwiązania (4+7)

933. Andrzej BABIARZ
(Polska)



+ (4+3)

934. Władysław TARASIUK
(Ukraina)



+ (4+4)

- 929 **FRAK** 1.Hf2+? K:h3 2.Hg3# 1...K:h5! 1.H:f6+? K:h5 2.Hg5# K:h3! 1.Hb7! tempo 1...K:h3 2.Hh1# 1...K:h5 2.Hh7#. Zamiana dwóch matów w miniaturze.
- 930 **MILEWSKI** 1.Kc4/Ke4/Wd5? Gf2! 1.Wa4? c5! 1W:g4? e5! 1.Wb4! ~ 2.Wb8 e5 3.Wd8# 1...c5 2.c4 ~ 3.Ha4# 1...e4 2.e4 ~ 3.H:g4#.
- 931 **JANEVSKI** 1.He4 Ga6+ (Gf5+?) 2.Ke3 Sf5# 1.He5 Sc2 (Sf5?) 2.Ke4 Gf5#. A setting of double anticipatory self-pin of the BQ, with dual avoidance in the W1 move which fails because of whiteself-obstruction on the mate square (f5) and pin-mates on the same square with delayed Umnov effects in a Meredith position without white pawns. [Autor]
- 932 **GIERSZYNSKIJ & PANKRATIEW** 1.Kf4 Gg7 2.Se5 Gh6# 1.Ke4 Gc1 2.Se5 Wf4#.
- 933 **BABIARZ** 1.Ga2! (1.Gd3? Kf2! 2.g5 Ke1 3.g6 K:d2 => 1...b1H! (1...Sc4 2.d3! Sd6 3.g5! Kf3 4.g6! +-; 1... Sb6 2.g5! +-) 2.G:b1 S:b1 3.d4! (3.g5? S:d2 4.g6 Se4 5.g7 Sf6+ 6.Kg6 Sg8! 7.Kf7 Sh6+ = - nieudana rundka króla wokół pionka w lewo .) 3...Sc3 4.g5 Sd5 5.g6 Kf3 6.g7 Se7! (6...Ke4 7.Kg6? Se7+! 8.Kf7 Sf5! =, ale 7.Kg8!! Sf6+ 8.Kf7 Kf5 9.d5 Ke5 10.d6 +-) 7.d5! S:d5 8.Kg8!! Sf6+ (8...Se7+ 9.Kf8! +-) 9.Kf7 Sg4 10.Kg6! wygrana. Nieudane rundki króla wokół pionka w lewo i skuteczne - w prawo!. [Autor]
- 934 **TARASIUK** 1.Sa4+ Kc6! (1...Kb5 3.Sc3+ +-) 2.Sc2 Sb3+ 3.Kc3 a1H+ 4.S:a1 S:a1 5.Gd1! (5.Ge6? Kb5 => 5...Kb5 6.Kd3!! (6.Kd2? Sb3+ 7.G:b3 Kb4 9.Kc2 a2 => 6...Kb4 (6...Sb3 7.Sc3+! [6.G:b3? Kb4 =] 7...Kb4 8.Sa2+ Ka4 9.Kc3 +-) 7.Sc3 a2! (7...Sb3 8.Sa2+ Ka4 9.Kc3 +-) 8.S:a2+ Ka3 9.Sc1 Kb2 (9...Kb4 10.Kd4 +-) 10.Kd2 Ka3 11.Kc3! (11.Sd3? Sb3 12.Kc3 Sc1! 13.S:c1 - pat) A) 11...Sb3! 12.S:b3! 12.G:b3? - pat; B) 11...Sc2! 12.K:c2! +- 12.G:c2? - pat.