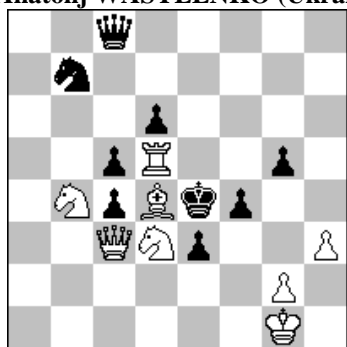


POLSKI ZWIĄZEK SZACHOWY 2018

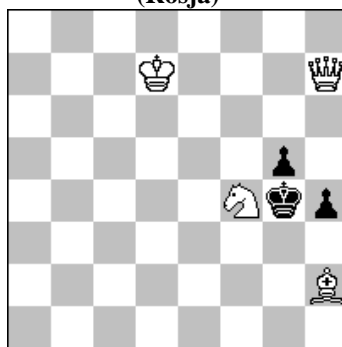
ORYGINAŁY 24 IV 2018 [1436-1441]

1436. Mark BASISTY
& Anatolij WASYLENKO (Ukraina)



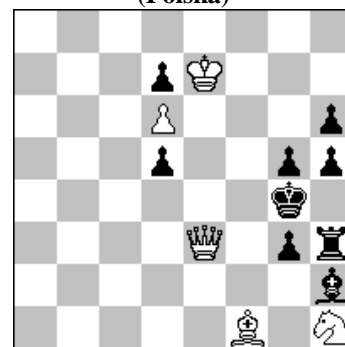
#2 (8+9)

1437. Ksenia PAWLENKO
(Rosja)



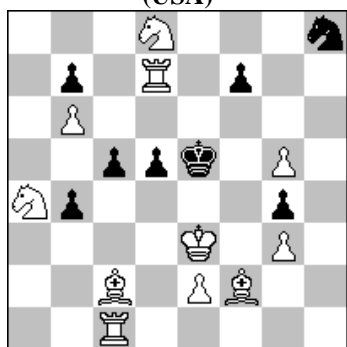
#3 b) Sf4→g2 c) Gh2→f1 (4+3)

1438. Eugeniusz IWANOW
(Polska)



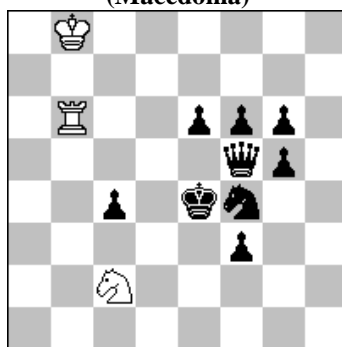
#3 (5+9)

1439. Rauf ALIOVSADZADE
(USA)



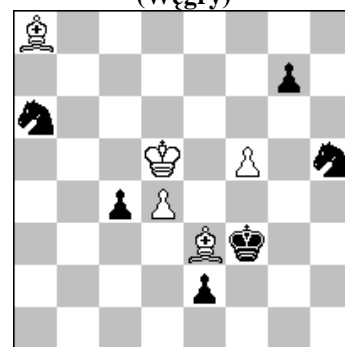
#3 (11+9)

1440. Živko JANEVSKI
(Macedonia)



h#2 4 rozwiązania (3+9)

1441. János CSÁK
(Węgry)



h#3 4 rozwiązania (5+6)

- 1436 BASISTY & WASYLENKO** 1.Sd~? ~ 2.Hc2# A 1...f3 2.H:e3# B 1...c:d4 a 2.H:d4# E 1...c:b4! 1.S:f4!/? ~ 2.H:e3# B (2.Hc2? E) 1...g:f4 2.Hc2# A 1...c:d4 a 2.H:d4# E 1...H:h3! (1...c:b4?) 1.G~ [f6/g7]? ~ 2.Hc4# C 1...e2 2.Sf2# D 1...c:b4 b 2.H:d4# E 1...Sa5! 1.G:e3! ~ 2.Sf2# D (2.Hc4? C) 1...f:e3 2.Hc4# C 1...c:b4 b 2.Hd4# E 1...K:e3 2.He1# 1...c:d3 2.H:d3# 1.S:c5? S:c5! 1.G:c5? H:c5! Threat Correction double. Pseudo le Grand double.Ruchlis theme. Caprice theme.. [Autorzy]
- 1437 PAWLENKO** 1...h3 2.H:h3# 1.Hg8? Kf3! 1.He7 Ke7? g:f4! 1.Hg6! 1...Kf3 2.Hd3+ Kf2 3.He2# 2...Kg4 3.Hh3# 1...h3 2.He6+ Kh4 3.H:h3# 2...Kf3 3.He2# b) 1.Hd3? 1...h3 2.He2+ Kf5 3.He6# 1...Kh5! 1.Hf7? 1...h3 2.Se3+ Kh4 3.Hh7# 1...Kh3! 1.Se1! 1...h3 2.Hh6 Kf5 3.He6# 1...Kh3 2.He4 K:h2 3.Hg2# c) 1.Sh3! 1...Kf3 2.Hd3+ Kg4 3.Ge2# 1...Kg3 2.He4 Kh2 3.Hg2#. Mates by different pieces B and Q) on the same square e2. [Autorka]. Witamy dziesięcioletnią rosyjską autorkę!
- 1438 IWANOW** 1...g2 2.Sf2+ Kf5/Kh4 3.Gd3/H:h3# 1.Hf3+? Kh4 2.Ge2 ~/g4 3.H:h5/Hf6# 1...K:f3! 1.Gg2! tempo 1...Kf5 2.Hf3+ Ke5/Kg6 3.Hf6/Hf7# 1...Kh4 2.Hd4+ g4 3.Hf6# 1...Gg1 2.G:h3+ K:h3,Kh4 3.H:g3#. W tej tryfazowej trzychodówce po każdym pierwszym posunięciu czarnych i drugim białych mamy teraz 2 możliwości obronne, po których następują 2 różne maty . Mamy jakby zamianę mata w jednym posunięciu obronnym. [Autor]
- 1439 ALIOVSADZADE** 1.Kd2! ~ 2.We7+ Kd6 3.G:c5# 1...Sg6 2.S:f7+ Ke6 3.S:c5# 1...d4 2.Gd3! ~ 3.W:c5# 2...c4 3.G:d4#.Theme: mates on same square with different units,with black King checkmated on three different squares. [Autor]
- 1440 JANEVSKI** 1.Sd3 Wd6 2.Se5 Wd4# 1.Hg4 W:e6+ 2.Kf5 Sd4# 1.Kd5 Kc7 2.He4 Wb5# 1.Hd5 Wb3 2.f5 We3#. A setting of two pairs of thematically connected solutions, mates on the same square (d4) is shown in the 1st pair. The 2nd pair shows Black play in the 1st move on the same square (d5). Black reciprocal square vacation Ke4/Df5 (II-III solutions) connects the both pairs. An elegant Meredith position without white pawns. [Autor]
- 1441 CSÁK** 1.e1G K:c4+ 2.Ke2 Kb3 3.Kd1 Gf3# 1.Kg2 Ke4 2.Kh1 Kf3 3.Sg3 K:g3# 1.Kg4 Kd6 2.K:f5 Ke7 3.Kg6 Ge4# 1.Sc7+ Kc6 2.Ke4 Kb7 3.Kd5 K:c7#.