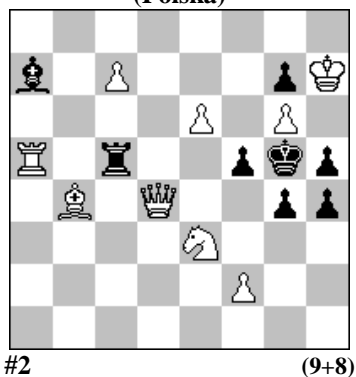


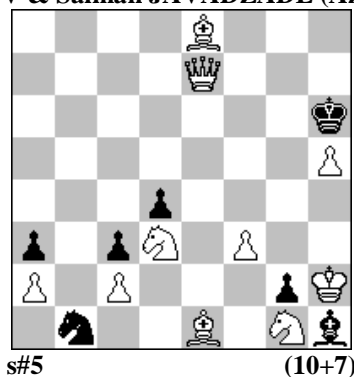
POLSKI ZWIĄZEK SZACHOWY 2018

ORYGINAŁY 18 IX 2018 [1562-1567]

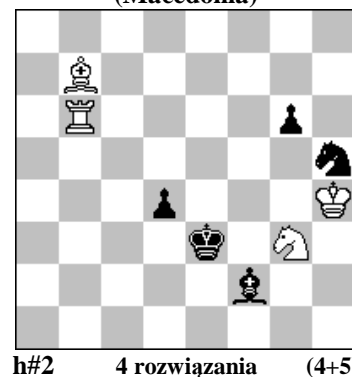
1562. Stefan PARZUCH  
(Polska)



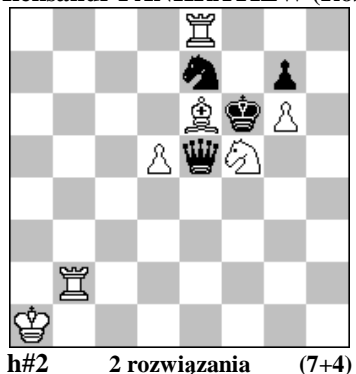
1563. Zoltan LABAI (Słowacja) & Vidadi  
ZAMANOV & Salman JAVADZADE (Azerbejdżan)



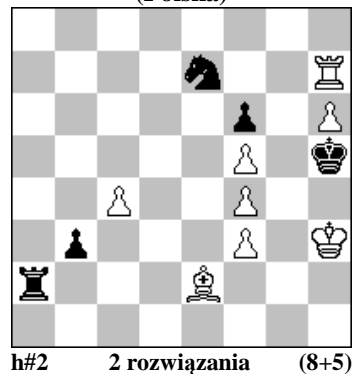
1564. Živko JANEVSKI  
(Macedonia)



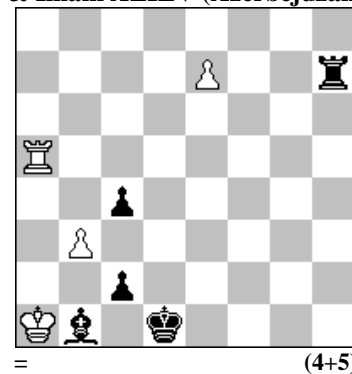
1565. Aleksiej IWUNIN  
& Aleksandr PANKRATIEV (Rosja)



1566. Stefan MILEWSKI  
(Polska)



1567. Andrzej BABIARZ (Polska)  
& Ilham ALIEV (Azerbejdżan)



1562 PARZUCH 1...f4 a 2.Hd8# A 1...g3 2.f4# 1...W:c7 2.W:f5# 1.Sg2! ~ 2.Hd8# A 1...f4 a 2.H:f4# B 1...g3 2.H:h4# 1...W:c7 2.Gd2# 1...Wd5 2.Ge7# 1.Sd5? h3! 1.c8H? Gb6! Dombrowskis, 3 maty zamienne, w rozwiązaniu czarne 4 razy otwierają linie białych figur.

1563 LABAI, ZAMANOV & JAVADZADE 1.Hf7? Kg5 a 2.Hf8 A tempo 2...Sd2 3.f4+ Kg4 4.Sf2+ Kh4 5.Sf3+ S:f3# 1...Sd2! 1.Gg6! Sd2 b 2.Hf8+ A Kg5 3.f4+ Kg4 4.Sf2+ Kh4 5.Sf3+ S:f3 #. Between try and solution for the defense of 1... Kg5 (a) and 1... Sd2 (b) is the type of Rukhlis(A). [Autorzy]

1564 JANEVSKI 1.Kf4 Wb5 2.Ge3 Se2# 1.Gg1 We6+ 2.Kf2 We2# 1.Ge1 Wf6 2.Gd2 Wf3# 1.Sf4 Wc6 2.Kf3 Wc3#. A setting of two pairs of thematically connected solutions in an elegant Gravure position without white pawns. [Autor]

1565 IWUNIN & PANKRATIEV 1.H:e6 Wg2 2.S:f5 W:e6# 1.H:f5 Wf2 2.S:g6 W:f5#.

1566 MILEWSKI 1.Wa4 c5 2.We4 f:e4# 1.S:f5 Gd3 2.Sg7 h:g7#.

1567 BABIARZ & ALIEV 1.Wd5+ (1.e8H? c1H+) 1...Kc1 (1...Ke2? 2.e8H+) 2.We5! (Złuda: 2.e8H? Wa7+ 3.Ha4 c:b3! 4.H:a7 b2#) 2...Wh8 (2...W:e7 3.W:e7 Kd2 4.Wd7+ - v. gra główna; 2...Wg7 3.We1+ Kd2 4.We2+=) 3.e8H W:e8 4.W:e8 Kd2 5.Wd8+ Kc3 6.Wc8! K:b3 (6...c1H 7.W:c4+ Kd2 8.W:c1=) 7.Wb8+ Kc3 8.Wb3+! Kd2 (8...c:b3 pat; 8...K:b3 pat) 9.Wc3! Ga2 (9...K:c3 pat; 9...c1H 10.W:c1 K:c1 pat) 10.Kb2 Gb3 11.Ka1! Kd1 (11...K:c3 pat; 11...Ga2 12.Kb2 pozycyjny remis) 12.Kb2 Kd2 13.Ka1! pozycyjny remis 13...c1H+ (13...K:c3 pat) 14.W:c1 K:c1 pat.