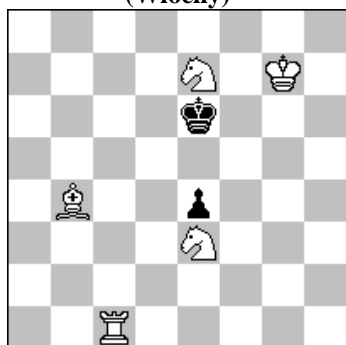


POLSKI ZWIĄZEK SZACHOWY 2018

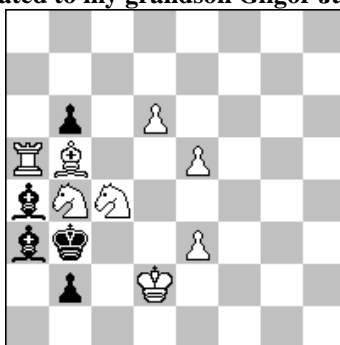
ORYGINAŁY 1 V 2018 [1442-1447]

1442. Alberto ARMENI
(Włochy)



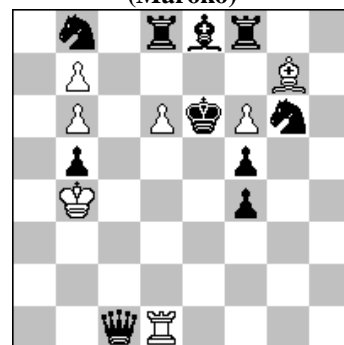
#3 b) Pe4→g5 c) Se3→b3 (5+2)
d) Se7→d5 e) Gb4→c6

1443. Živko JANEVSKI (Macedonia)
„Dedicated to my grandson Gligor Janevski“



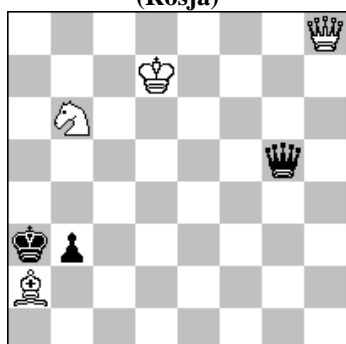
h#2 2 rozwiązania (8+5)

1444. Abdelaziz ONKOUD
(Maroko)



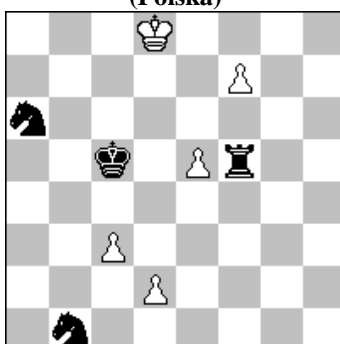
h#2 4 rozwiązania (7+10)

1445. Władimir KUZMICZEW
(Rosja)



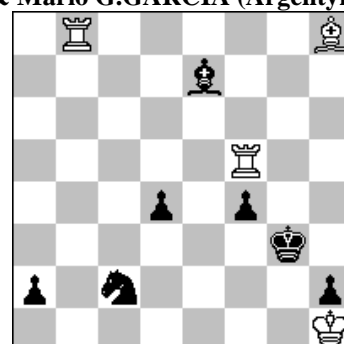
+ (4+3)

1446. Andrzej BABIARZ
(Polska)



= (5+4)

1447. Peter S. KRUG (Austria)
& Mario G.GARCIA (Argentyna)



+ (4+7)

1442 ARMENI a) 1.Wd1! Ke5 2.Sg6+ Ke6 3.Wd6# b) 1.Sc4? Kd7 2.Sb6+ Ke6/Kd8,Ke8 3.We1/Wc8# 1...g4! 1.Sg4! Kd7 2.Sf6+ Kd8/Ke6 3.Wc8/We1# c) 1.Wd1! ~ 2.Wd5 ~ 3.Sd4# 1...Ke5 2.Gd6+ Ke6 3.Sc5# d) 1.Kf8? Kd7 2.Wc7+ Kd8/Ke6 3.Ge7/We7# 1...Ke5! 1.Wc4? ~ 2.Sf6 ~ 3.W:e4# 1...Kd7 2.Sb6+ Kd8/Ke8/Ke6 3.Wc8/Wc8/W:e4# 1...Ke5! 1.Wc8? Kd7.2.Sb6+ Ke6 3.We8# 1...Ke5! 1.Wc7! Ke5 2.Gc5 Ke6 3.We7# e) 1.Wd1? Ke5 2.Sg6+ Ke6 3.Gd7# 1...K:e7! 1.Sg6! Kd6 2.Ge8 Ke6 3.Wc6#. Miniature. The changed mates [2...Ke6, 2...Kd8]. [Autor]

1443 JANEVSKI 1.b:a5 Sb6 2.a:b4 Gc4# 1.G:b5 Sc2 2.G:c4 W:a3#. A setting of Zilahi theme with consecutive captures of two white pieces. [Autor]



Gligori

The best wishes for Grandson and congratulations for the Grandfather!

1444 ONKOUD 1.Hc5+ K:c5 2.Ke5 We1# 1.W:d6 F:f8 2.Kd7 W:d6# 1.Hc7 d:c7 2.Se5 c:d8S# 1.Se7 f:e7 2.Sd7 e:d8S#. The Compass theme. (EAST). [Autor]

1445 KUZMICZEW 1.Gb1! Hd2+ 2.Kc6! (2.Kc7? Hc3+!! 3.H:c3 – pat wzorowy ze związaniem) 2... Hc3+!! 3.Kb5!! H:h8 4.Sc4# - mat wzorowy (3... Hb4+ 4.Ka6! Hc3 5.Hf8+ Kb2 6.Sa4+). Original pin-stalemate and mutual sacrifices of Queens. [Autor]

1446 BABIARZ 1.e6! (1.Ke7? S:d2! 2.f8H W:f8 3.K:f8 Kd5! 4.c4+ Ke6! [4...K:e5? 5.c5! =] 5.c5 Sc7!! +- [5...S:c5? =] Troicki) 1...Kd6 2.e7 Wb5! 3.e8S+! (3.e8H? Wb8#) 3...Ke6 4.f8S+! Kd5 5.c4+! K:c4 6.Sd6+ Kc5 7.S:b5 remis. Czarne skoczki i "Troicki" w głównej roli w złudzie, a białe - z promocji - w rozwiązaniu. [Autor]

1447 KRUG & GARCIA 1.Wg8+ Kh4! (1...Kf3 2.G:d4 S:d4 3.Wa5+; 1...Kh3 2.Wh5+ Gh4 3.Wa8 a1H+ 4.W:a1 S:a1 5.Gf6!+) 2.W:f4+! (Złuda: 2.G:d4? S:d4 3.Wa5 f3 4.K:h2 Gd6+ 5.Kg1 Gc5! 6.W:a2 Sf5+/e2 7.Kf1 Sg3+! =) 2...Kh3 3.Wf3+! (3.Wf1? a1H 4.W:a1 S:a1 5.G:d4 Sb3! ÷) 3...Kh4 4.Ge5 a1H+ 5.K:h2 Ha3 (gra główna 5...Gg5 6.Gf6! [6.Wg3? Hc1! 7.Wh8+ Gh6 8.Gf6+ Kh5 9.Gg7 Hd2+] 6...Se3 [6...G:f6 7.Wh3#; 6...Kg4 7.Wf2+] 7.G:g5 Kg4 [7...Kh5 8.G:e3 Ha2+ 9.Wg2!+-] 8.Wf4+ Kh5 9.Wh4#) 6.Gg3+! (6.W:a3? S:a3/Ga3 =) 6...Kh5 7.Wf5+ Kh6 8.Gf4+ Kh7 9.Wg2! (9.Wg1? Hc5! =)9...Hf3 (9...Hc5 10.W:c5 G:c5 11.W:c2+-) 10.Wf7+ Kh8 11.Ge5+-.