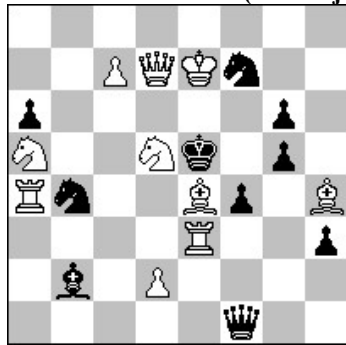


POLSKI ZWIĄZEK SZACHOWY 2018

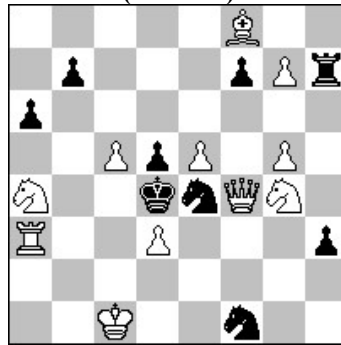
ORYGINAŁY 6 XI 2018 [1604-1609]

1604. Zoltan LABAI (Słowacja & Salman JAVADZADE (Azerbejdżan)



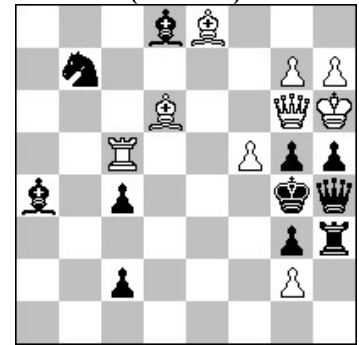
#2 (10+10)

1605. Władimir SAMIŁO (Ukraina)



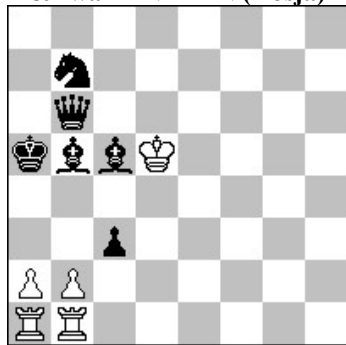
#3 (11+9)

1606. Iwan SOROKA (Ukraina)



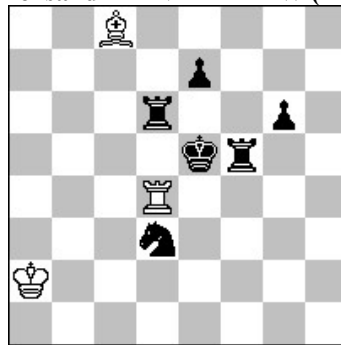
s#3 (9+11)

1607. Anatolij SKRIPNIK & Iwan ANTIPIIN (Rosja)



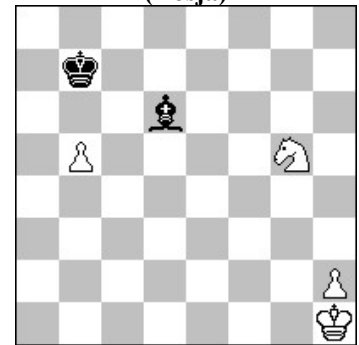
h#2 4 rozwiązania (5+6)

1608. Michail GIERSZYNSKIJ (Ukraina) & Aleksandr PANKRATIEW (Rosja)



h#3 2 rozwiązania (3+6)

1609. Władimir KUZMICZEW (Rosja)



+ (4+2)

- 1604 LABAI & JAVADZADE** 1...Sd5+ a 2.H:d5# 1...Sc6+ b 2.S:c6# 1...g4 2.Gf6# A 1...Gd4 2.He6# B 1.Sb3? ~ 2.He6# B 1...Sd8 2.Hd6# C 1...Sd5+ 2.H:d5# 1...Sc6+! 1.S:f4! ~ 2.S:g6# 1...Sd5+ a 2.G:d5# 1...Sc6+ b 2.G:c6# 1...e:f4 2.Gf6# A 1...Sh8 2.Hd6# C 1...K:f4 2.Gg3# 1...H:f4 2.Sc4#. Changed mates, Rukhlis, Rook - bishop batteries. [Autorzy]
- 1605 SAMIŁO** 1.c6? ~ 2.Gc5# 1...b6! 1.e6? ~ 2.He5# 1...f6! 1.Wb3? ~ 2.Wb4+ K:d3 3.H:f1# 1...a5! 1.H:f1? ~ 2.Hg1+ Sf2 3.H:f2# 1...h2! 1.Wc3! ~ 2.Wc4+ d:c4/K:d3 3.H:e4/H:f1# 1...b5 2.c:b5! (2.c6? b:a4!) ~ 3.Gc5# 1...f5 2.e:f6! (2.e6? f:g4!) ~ 3.He5#. Logical problem: two thematic tries at the beginning; in the solution - the thematic choice on the 2nd move, unblocking the squares c5 and e5, "e.p.". Dresden theme. See the problem V.Schneider, 1967 (Kc2-Kd4) with a similar mechanism. [Autor]
- 1606 SOROKA** 1.f6! ~ 2.Gd7+ G:d7 3.H:h5+ H:h5# 1...Gd7 2.Hf5+ G:f5 3.G:h5+ H:h5# 1...Gb3 2.W:c4+ G:c4 3.H:g5+ H:g5# 1...G:e8 2.H:h5+ G:h5 3.W:g5+ H:g5# 1...S:d6 2.Wc4+ S:c4,e4 3.H:g5+ H:g5#. Two pairs of variations, where the play in each pair of white pieces (Dg6, Le8) and (Dg6, Tc5) is concentrated on the squares h5 and g5 accordingly. In the each pair first white piece is sacrificing, then the second piece strikes on the h5 (or g5) and vice versa - change of functions. All defenses are made with the same piece - black Bishop a4. [Autor]
- 1607 SKRIPNIK & ANTIPIIN** 1.Ka4 a3 A 2.Ha5 (2.Sa5?) b3# B 1.Kb4 b3 B 2.Sa5 (2.Ha5?) a3# A 1.Ga6 b4+ C2.Kb5 a4# D 1.Ha6 a4 D 2.Gb6 b4# A.. Meredith with alternation of mats AB-BA and CD-DC with blocking of the a5 field in the first pair of solutions and the a6 field in the second pair of solutions. The White Avanta is gone, came in the game of black pieces. The antidual division of the mats.. [Autor]
- 1608 GIERSZYNSKIJ & PANKRATIEW** 1.Rff6 Bf5 2.Sf4 B:g6 3.Sd5 Re4# 1.Rdf6 Bb7 2.Ke6 Rd8 3.Se5 Bd5#.
- 1609 KUZMICZEW** 1.Se4! 1...Ga3 2.Sd2! Kb6 3.Sc4+!; 1...Gb4 2.Sf6! Kb6/Kc7 3.Sd5+!; 1...Ge7 2.Sc3! Kb6 3.Sd5+!; 1...Gc7 2.Sc3! Kb6 3.Sd5+!; 1...Gb8 2.Sc5+! Kb6 3.Sd7+!; 1...Ge5 2.Sc5+! Kb6 3.Sd7+!; 1...Gf4 2.Sc3! Kb6 3.Sd5+!; 1...Gf8 2.Sf6! Kb6 3.Sd7+!; 1...Kc7 3.Sd5+! Kd6 4.Sb6! Kc5 5.Sd7+! 4...Gg7 5.Sa4! oraz 1...G:h2 2.K:h2 Kb6 3.Sc3! Accurate, the original domination of Knight over Bishop! [Autor]