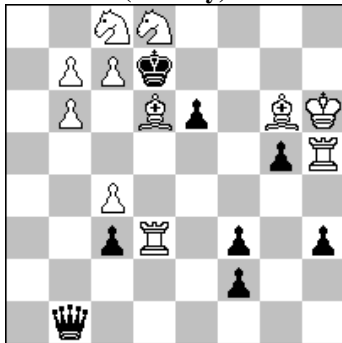


POLSKI ZWIĄZEK SZACHOWY 2017

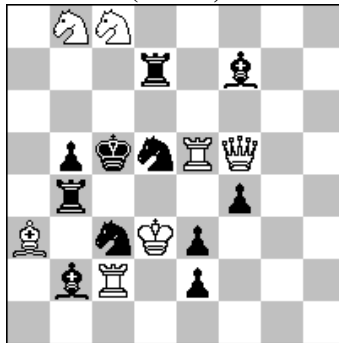
ORYGINAŁY 4 IV 2017 [1127-1132]

1127 Alberto ARMENI
(Włochy)



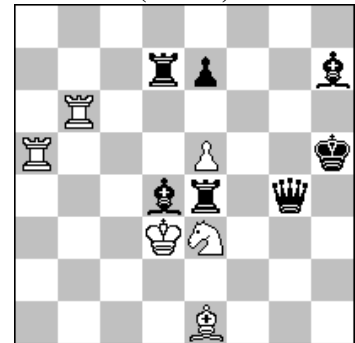
#2 (11+8)

1128. Eugeniusz IWANOW
(Polska)



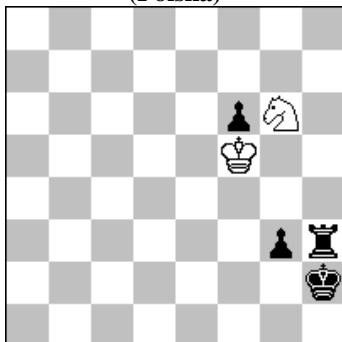
s#2 (7+11)

1129 Stefan MILEWSKI
(Polska)



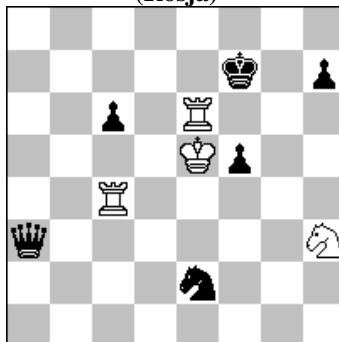
h#2 , 2 rozwiązania (6+7)

1130. Marian FRAK
(Polska)



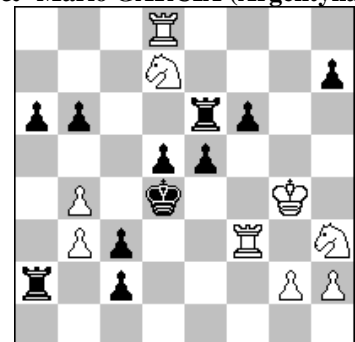
h#3 b) + cz.Sg4 (2+4)

1131. Paweł ARESTOW
(Rosja)



= (4+6)

1132. Peter S. KRUG (Austria)
& Mario GARCÍA (Argentyna)



+ (9+11)

- 1127 ARMENI 1.c5? ~ 2.c6# 1...H:b6 2.S:b6# 1...Hb5! 1.Sa7~/Se7? ~ 2.b8S,c8H# 1...H:b6 2.c8H# 1...H:d3! 1.K:g5! ~ 2.Wh7# 1...Hb5+ 2.Gc5# 1...Hc1+ 2.Gf4# 1...Hg1+ 2.Gg3#.
- 1128 IWANOW 1...Gg6 2.W:d5+ W:d5# 1.We4? ~ 2.Wc4+ b:c4# 1...G:a3! a 1.H:f4? ~ 2.Hc4+ b:c4# 1...G:a3 a 2.Hd4+ W:d4# 1...Gg6+! b 1.He4! ~ 2.Hc4+ A (2.Hd4? B) b:c4# 1...G:a3 a 2.Hd4+ B (2.Hc4? A) W:d4# 1...Gg6 b 2.W:d5+ W:d5#.
- 1129 MILEWSKI 1.G:e5+ Sd5 2.Gd4 Sf4# 1.W:e5+ Sf5 2.We4 Sg7#. Szachy b. K, wiązana b.S, switchback z otwieraniem linii b.W i uwolnienia.
- 1130 FRAK a) 1.Kg2 K:f6 2.Wh2 Kg5 3.Kh3 Sf4# b) 1.g2 Se7 2.Kg3 Kg6 3.Kh4 Sf5#. Kameleonowe maty wzorowe. Zamiana miejsc cz. K i W w pozycji a oraz b. K i S w bliźniaku b. W hołdzie Saturninowi Limbachowi. [Autor]
- 1131 ARESTOW 1.Sg5+! (1.We:c6? He3+ 2.K:f5 Sg3+ 3.Kg4 h5+ 4.Kh4 Sf5+ 5.K:h5 H:h3+ 6.Kg5 Sd6,Se7 -+) 1...Kg7 (1...Kg8 2.We:c6 Hb2+ 3.K:f5 Sd4+ 4.W:f4 Hb5+ 5.Kf4 =) 2.We:c6 He3+! (2...Hb2+ 3.K:f5 Sd4+ 4.W:d4 Hb5+ 5.Kf4 H:c6 6.Sf3 =) 3.K:f5 Sg3+ 4.Kg4 h5+ 5.Kh4 Sf5+ 6.K:h5 He2+ 7.Sf3! (7.Wg4? He8+ 8.Sf7!? K:f7 9.Wgg6 Sg7+ 10.Kh6 He3+ 11.Kh7 Se8! -+) 7...H:f3+ 8.Wg4+ Kf7 (8...Kh7 9.Wc7+ Kh8 10.Wc8+ Kh7 11.Wc7+ =) 9. Wf6+! K:f6 – pat (9...Ke7 10.Kg5 =).
- 1132 KRUG & GARCÍA 1.Kf5! (1.Wf1? Wb2=) 1...Wd6 (1...e4 2.Wg3 We8 3.Sb8 e3 4.Sc6+ Kd3 5.Sf4+; 1...c1H 2.K:e6 Hb2 e.g. 3.S:e5 f:e5 4.W:d5+ Ke4 5.Sg5#) 2.Sf4! (2.Sb8? e4 3.Wg3 c1H 4.W:d6 e3 5.W:d5+ K:d5 6.Sf4+ Kd6 7.Wg7 Hc2+ 8.K:f6 Hg6+!-+; 2.Sf8? c1H 3.W:d6 Hb1+! [3...Hc2+? 4.K:f6 h6 5.Se6+ Ke4 6.Wf5+!] 4.K:f6 h6! =) 2...e:f4 (2...c1H 3.Wd3#; 2...c1S 3.S:b6 W:d8 4.Se6#) 3.Sb8 c1H (3...W:d8 4.Sc6#; 3...c1S 4.W:d6 S:b3 5.Wc6+-) 4.Sc6+ W:c6 5.W:d5+ K:d5 6.Wd3#.