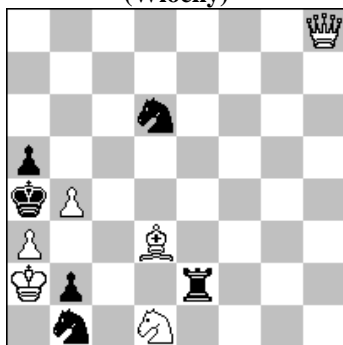


**POLSKI ZWIĄZEK SZACHOWY 2016**

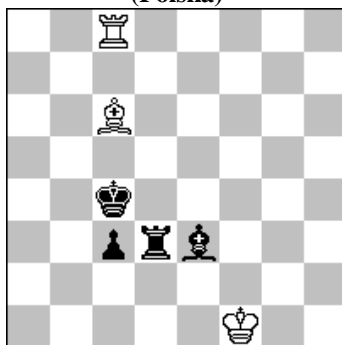
**ORYGINAŁY 21 VI 2016 [905-910]**

**905. Alberto ARMENI**  
(Włochy)



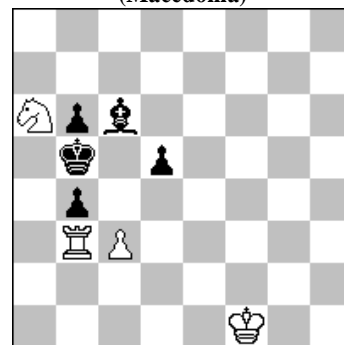
#2 (6+6)

**906. Eugeniusz IWANOW**  
(Polska)



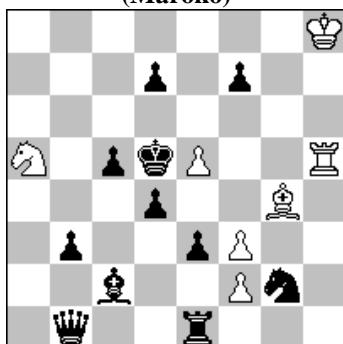
h#2 b) Pc3→c2 (3+4)

**907. Živko JANEVSKI**  
(Macedonia)



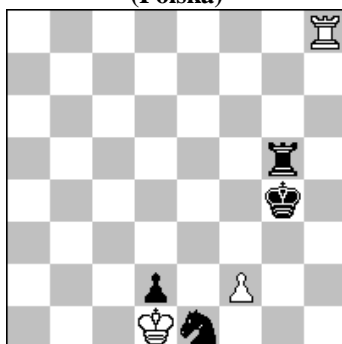
h#2 3 rozwiązania (4+5)

**908. Abdelaziz ONKOUD**  
(Maroko)



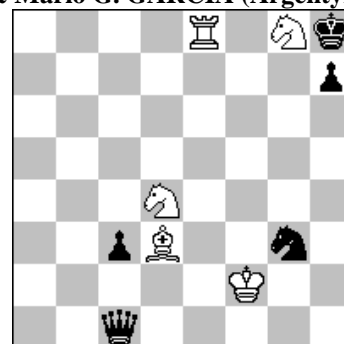
h#2 4 rozwiązania (8+2)

**909. Stefan MILEWSKI**  
(Polska)



h#3 2 rozwiązania (3+4)

**910. Peter S. KRUG (Austria)**  
& **Mario G. GARCIA (Argentyna)**



+ (5+5)