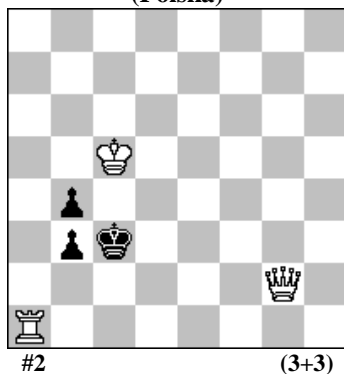


POLSKI ZWIĄZEK SZACHOWY 2016

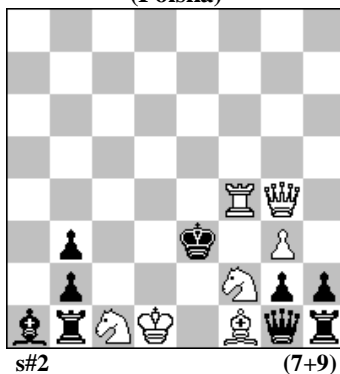
ROZWIĄZANIA 14 VI 2016 [899-904]

899. Andrzej BABIARZ
(Polska)



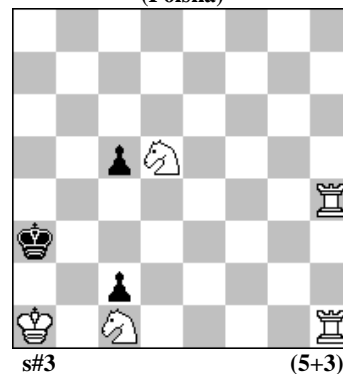
#2 (3+3)

900. Eugeniusz IWANOW
(Polska)



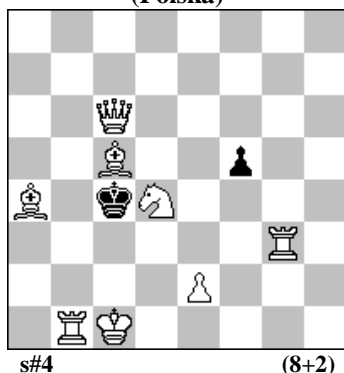
s#2 (7+9)

901. Marian FRAK
(Polska)



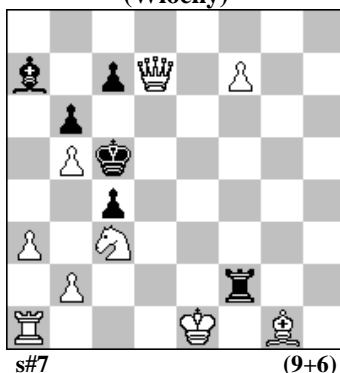
s#3 (5+3)

902. Jan KIELICH
(Polska)



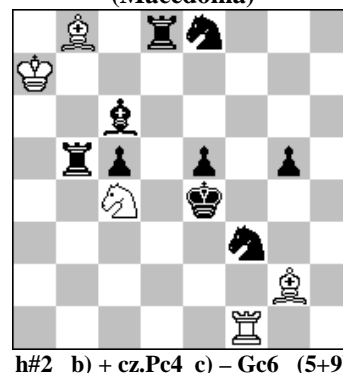
s#4 (8+2)

903. Alberto ARMENI
(Włochy)



s#7 (9+6)

904. Živko JANEVSKI
(Macedonia)



h#2 b) + cz.Pc4 c) - Gc6 (5+9)

- 899 BABIARZ** 1.Wb1? Kd3 a 2.W:b3# 1...b2! b 1.Wf1? b2 b 2.Wf3# 1...Kd3! 1.Wh1! Kd3,/b2 2.Wh3#
- 900 IWANOW** 1...b:c1S 2.He2+ S:e2# 1...g:f1G 2.He2+ G:e2# 1...H:f2 2.He2+ H:e2# 1.Hd7! tempo 1...b:c1S 2.Hd3+ S:d3# 1...b:c1G 2.Hd2+ G:d2# 1...H:f2 2.Hd2+ H:d2# 1...g:f1S 2.Hd2+ S:d2#1...g:f1G 2.Hd3+ G:d3#. Zamiana 3 gier w przygotowaniu: maty na tym samym polu 3 różnymi figurami. W przygotowaniu i rozwiązaniu jednofazowy Ruchlis. [Autor]
- 901 FRAK** 1.Wb4! tempo 1...c4 2.Wh4 c3 3.Wb2 c:b2# 1...c:b4 2.Sb6 b3 3.Wh4 b2#.
- 902 KIELICH** 1.We3! f4 2.Sf3 f:e3 3.Gd1 Kc3 4.Sd2 e:d2#
- 903 ARMENI** 1.0-0-0 Gb8 2.H:c7+ G:c7 3.f8H+ Gd6 4.b4+ c:b3 ep 5.H:d6+ K c4 6.H d3+ Kc5 7.Sb1 b2# 1...c6 2.Hc8 Gb8 3.f8H+ Gd6 4.b4+ etc. Valladao. Switchback of the black King. Phoenix of the white Queen. [Autor]
- 904 JANEVSKI** a) 1.Kf4 Gh3 2.Ge4 G:e5# b) 1.Wd4 We1+ 2.Kd5 W:e5# c) 1.Kd5 Wd1+ 2.Kc6 S:e5#. Prolonged self-pin of BSf3 and pin-mates on the same square in a position without white Pawns. [Autor]