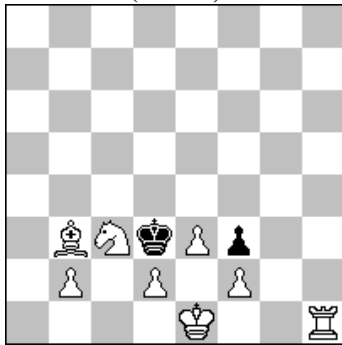


POLSKI ZWIĄZEK SZACHOWY 2016

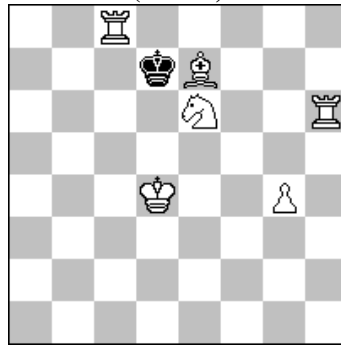
ORYGINAŁY 31 V 2016 [887-892]

887. Marian FRAK
(Polska)



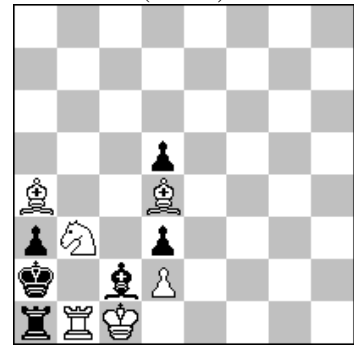
#2 b) Kd3a1 (8+2)

888. Marian FRAK
(Polska)



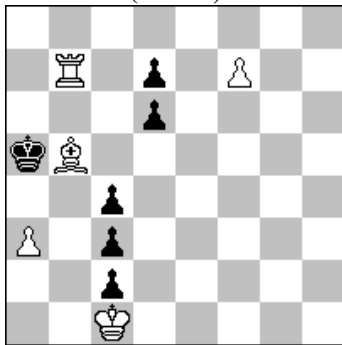
#3 (6+1)

889. Marian FRAK
(Polska)



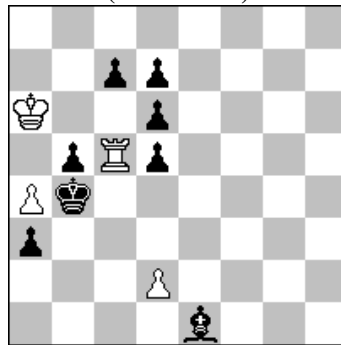
s#2 (6+6)

890. Andrzej BABIARZ
(Polska)



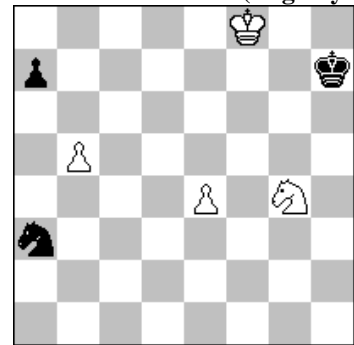
s#5 (5+6)

881. Živko JANEVSKI
(Macedonia)



h#2 2 rozwiązania (4+8)

892. Peter KRUG (Austria)
& **Mario G. GARCIA (Argentyna)**



+ (4+3)