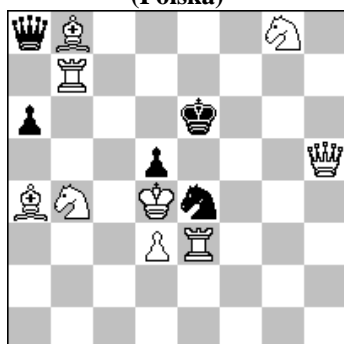


POLSKI ZWIĄZEK SZACHOWY 2016

ORYGINAŁY 26 IV 2016 [863-868]

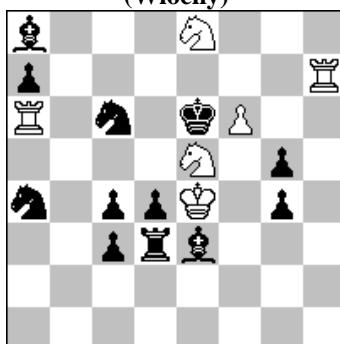
863. Eugeniusz IWANOW  
(Polska)



s#2

(9+5)

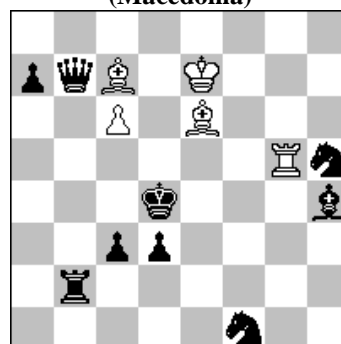
864. Alberto ARMENI  
(Włochy)



s#2

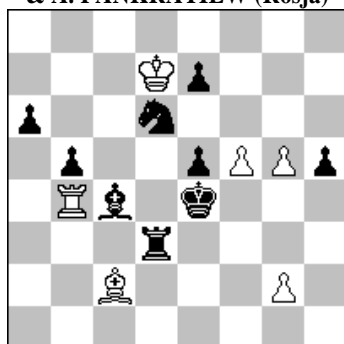
(6+12)

865. Živko JANEVSKI  
(Macedonia)



h#2 2 rozwiązania b) Kd4→e4 (5+9)

866. M. GIERSZYNSKIJ (Ukraina)  
& A. PANKRATIEW (Rosja)

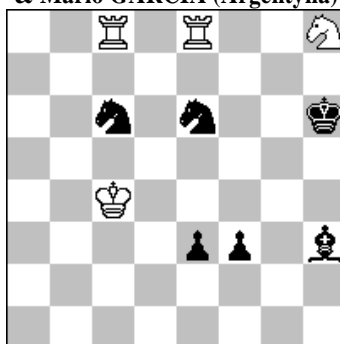


h#3

b) Pf5→e6

(6+9)

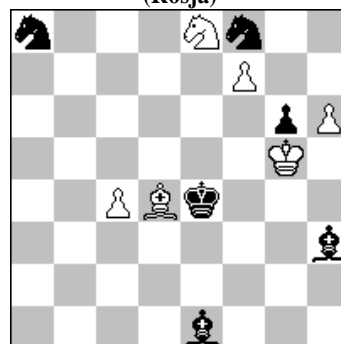
867. Peter KRUG (Austria)  
& Mario GARCÍA (Argentyna)



=

(4+6)

868. Paweł ARESTOW  
(Rosja)



+

(6+6)